

# COLOURS AND FINISHES COLORI E FINITURE

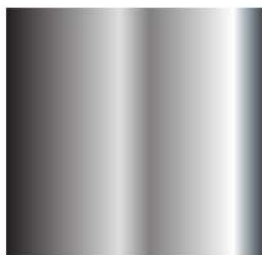
## Techno-polymer / Tecnopolimero

							
<b>05</b> Light blue / Azzurro	<b>99</b> Lavender / Lavanda	<b>98</b> Pale blue / Avio	<b>34</b> Light blue / Azzurro	<b>08</b> Blue / Blu	<b>09</b> Dark Blue / Blu scuro	<b>16</b> Indigo / Indaco	<b>11</b> Night Blue / Blu notte
							
<b>03</b> Light green / Verdino	<b>42</b> Green / Verde	<b>51</b> Sage green / Salvia	<b>35</b> Lime / Lime	<b>41</b> Green / Verde	<b>25</b> Olive Green Verde Oliva	<b>23</b> Military green Verde militare	<b>24</b> Forest green Verde foresta
							
<b>36</b> Mustard / Senape	<b>02</b> Yellow / Giallo	<b>38</b> Saffron / Zafferano	<b>07</b> Apricot / Albicocca	<b>33</b> Orange / Arancione	<b>20</b> Lobster / Aragosta	<b>06</b> Red / Rosso	<b>12</b> Brick / Mattone
							
<b>26</b> Marsala / Marsala	<b>22</b> Bordeaux / Bordeaux	<b>01</b> Beige / Beige	<b>54</b> Sand / Sabbia	<b>18</b> Dusty Rose Polvere Rosa	<b>13</b> Brown / Marrone	<b>52</b> Turtledove / Tortora	<b>55</b> Mineral Grey Grigio Minerale
							
<b>39</b> Brown / Marrone	<b>00</b> White / Bianco	<b>14</b> Pearl grey / Grigio perla	<b>04</b> Grey / Grigio	<b>21</b> Grey / Grigio	<b>10</b> Black / Nero		
							
<b>46</b> Transp. green Verde trasp.	<b>45</b> Transp. red Rosso trasp.	<b>47</b> Transp. Amber Ambra trasp.	<b>44</b> Transparent Trasparente				

# COLOURS AND FINISHES

## COLORI E FINITURE

### Metal finishes / Finiture metalli



**C**  
Chromed / Cromato



**S**  
Satin / Satinato



**B**  
White / Bianco



**N**  
Black / Nero



**D**  
Gold / Oro



**98**  
Pale blue / Avio



**16**  
Indigo / Indaco



**35**  
Lime / Lime



**02**  
Yellow / Giallo



**06**  
Red / Rosso



**12**  
Brick / Mattone



**22**  
Bordeaux / Bordeaux



**54**  
Sand / Sabbia



**18**  
Dusty Rose / Polvere Rosa



**55**  
Mineral Gray / Grigio Minerale

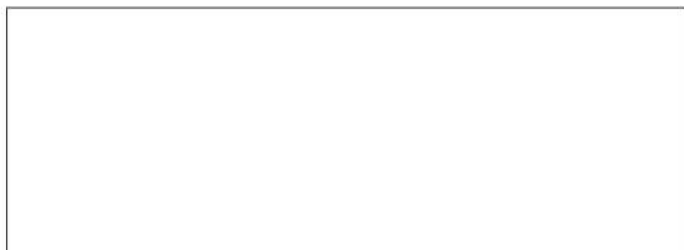


**14**  
Pearl Grey / Grigio Perla



**21**  
Grey / Grigio Antracite

Bases and frames wooden finishes / Finiture legno basi e telai



00 White stained / Bianco



F Natural Beech / Faggio naturale



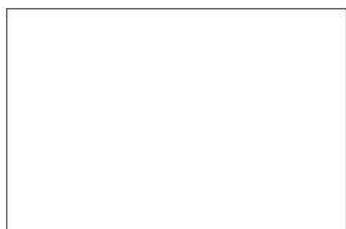
RN Natural Oak / Rovere Naturale



10 Black stained / Nero

F-00-10 finishes arise from Beech Essence. RN finish come from Oak Essence  
Le finiture F-00-10 derivano da essenza di Faggio. La finitura RN deriva da essenza di Rovere.

Standard Compactop Surface - Flat black edge / Bordo piatto nero



00

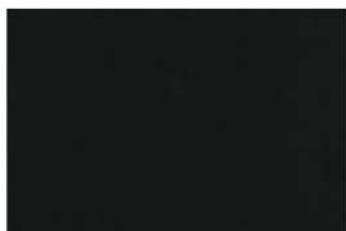


10



14

Special Compactop Surface Fenix - Black edge / Bordo nero - [www.fenixforinteriors.com](http://www.fenixforinteriors.com)



0720

# COLOURS AND FINISHES

## COLORI E FINITURE

Special Compactop Surface - Solid - Black edge / Bordo nero - [www.arpaindustriale.com](http://www.arpaindustriale.com)



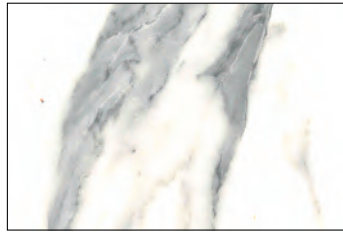
Special Compactop Surface - Wood Effect - Brown edge / Bordo marrone - [www.arpaindustriale.com](http://www.arpaindustriale.com)



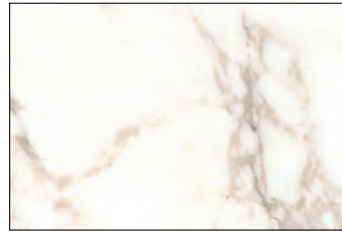
Special Compactop Surface - Stone, Concrete and Marble Effect - [www.arpaindustriale.com](http://www.arpaindustriale.com) - [www.lamicolor.it](http://www.lamicolor.it)



**3520**  
Edge similar to the top  
Bordo abbinato al top



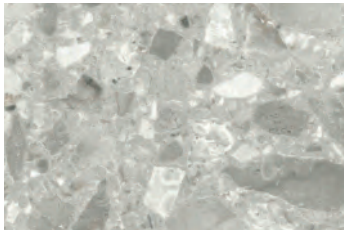
**5547**  
White edge  
Bordo bianco



**6087**  
Brown edge  
Bordo marrone



**6075**  
Edge similar to the top  
Bordo abbinato al top



**6078**  
Black edge  
Bordo nero



**3347**  
Black edge  
Bordo nero



**3445**  
Edge similar to the top  
Bordo abbinato al top



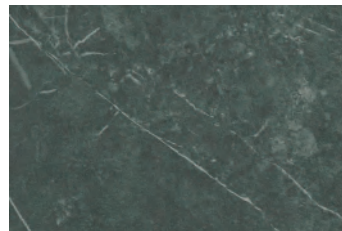
**6089**  
Brown edge  
Bordo marrone



**3276**  
Brown edge  
Bordo marrone



**6086**  
Black edge  
Bordo nero



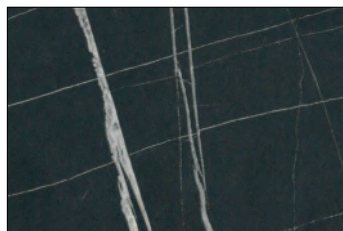
**3522**  
Black edge  
Bordo nero



**3349**  
Black edge  
Bordo nero



**3192**  
Black edge  
Bordo nero



**6084**  
Black edge  
Bordo nero



**6076**  
Black edge  
Bordo nero

# COLOURS AND FINISHES

## COLORI E FINITURE

### Standard Laminated Surface



F

RN

W

00



10

### Special Laminated Surface - Wood Effect



B01

X41

61M

V32

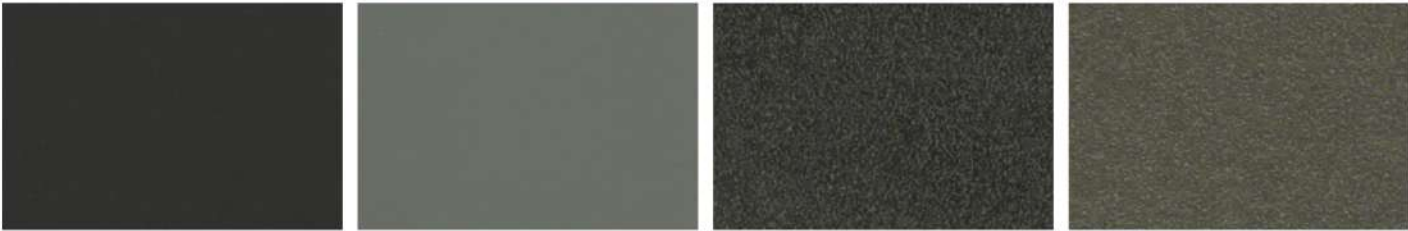


WG8



WG9

### Special Laminated Surface - Fenix - [www.fenixforinteriors.com](http://www.fenixforinteriors.com)



0720

0718

2630

2629

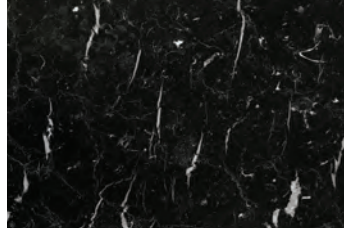


2628

## Marble Surface



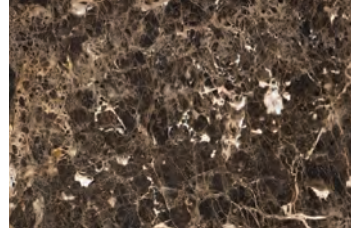
MBC - BIANCO CARRARA



MNM - NERO MARQUINA



MVG - VERDE GUATEMALA



MED - EMPERADOR DARK

## Porcelain Surface



PCO - CALACATTA ORO



PNG - NERO GRECO

# COLOURS AND FINISHES COLORI E FINITURE



## K King Fabric / Tessuto King



6001

6091

6034

6052

7019

7022



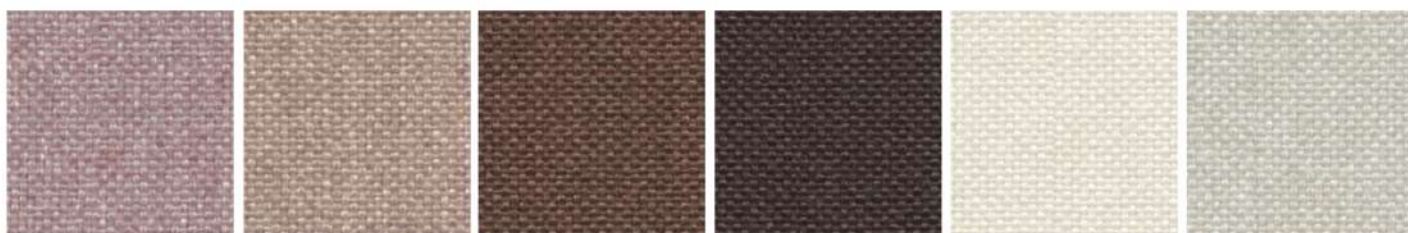
3030

3082

4021

4032

5001



1033

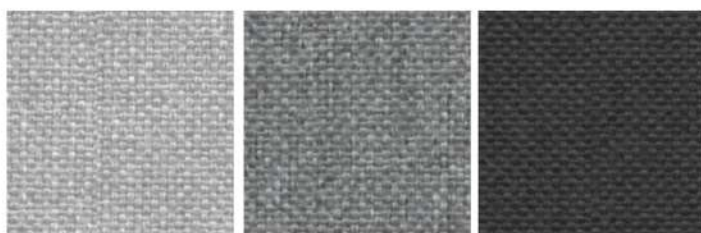
1008

2003

2007

1012

1025



8032

8006

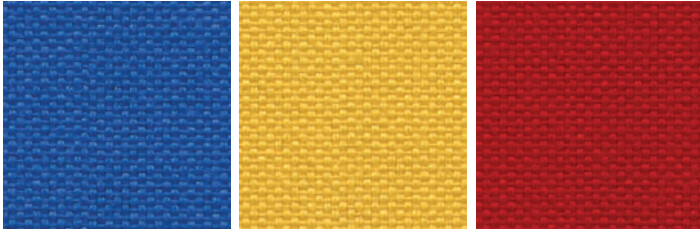
8011

- Composition: 100% POLYESTER - TREVIRA CS
- Abrasion: UNI EN ISO 12947-2 80.000 Cycle Martindale  $\pm 10\%$
- Light Resistance-Xenotest: UNI EN ISO 105-B02 / 6 (tol from 5 to 8)
- Fire proof: UNI 9174 - 8456 Class C1, UNI 9175 Class 1, DIN 4102 Class B1, NF 92501-7 Class M1, NF D 60013, 11M (UNI 9175) Class AM18, EN 1021-1 & 2, BS Crib 5, BS 7176 Class Medium Hazard, EN 13773 Class 1, OENORM 3800-1 Class B1,Q1,TR1, California TB117, USA NFPA 701, USA NFPA 260, IMO A 652 (16) Part 8 Upholstery
- Maintenance: Standard 60° C cotton cycle.

Visit [www.fidivi.com](http://www.fidivi.com) for complete colours range / Visionate la completa gamma colori su [www.fidivi.com](http://www.fidivi.com)



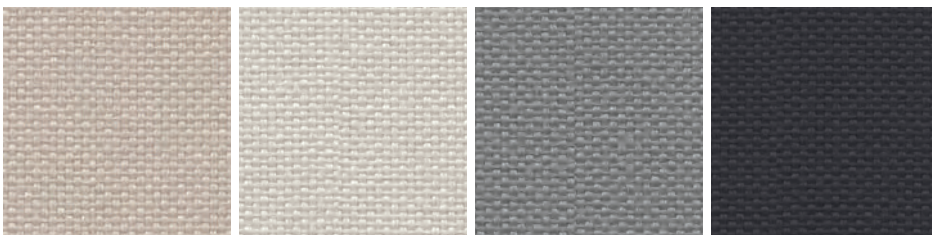
## L King L Fabric / Tessuto King L



6071

3090

4027



1010

1025

8014

8010

- Composition: 100% POLYESTER
- Abrasion: UNI EN ISO 12947/2 70.000 Cycle Martindale  $\pm 10\%$
- Light Resistance-Xenotest: UNI EN ISO 105-B02 / 6 (tol from 5 to 8)
- Fire proof: UNI 9174 - 8456 Class C1, DIN 4102 Class B1, NF P 92501-7 Class M1, IMO Res. A652 (16), NF D 60013 Class AM18, EN 1021-1 & 2, BS 5852 part II Crib 5, BS 7176 Medium Hazard, ONORM B 3825-Onorm A 3800-1 Class B1-Q1-TR1, Euroclass EN 13501-1, EN 1021-1 & 2, 1IM (UNI 9175), California TB 117
- Maintenance: Use vacuum-cleaner, don't brush.

Visit [www.fidivi.com](http://www.fidivi.com) for complete colours range / Visionate la completa gamma colori su [www.fidivi.com](http://www.fidivi.com)

# COLOURS AND FINISHES

## COLORI E FINITURE

DK Kvadrat Fabric (Steelcut3) / Tessuto Kvadrat (Steelcut3)



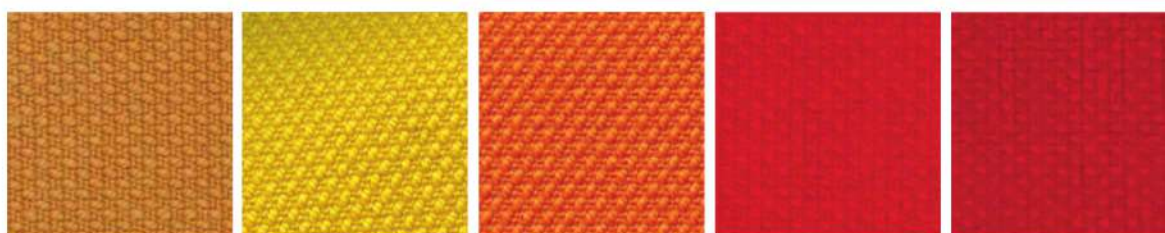
672

732

780

932

975



252

445

535

545

552



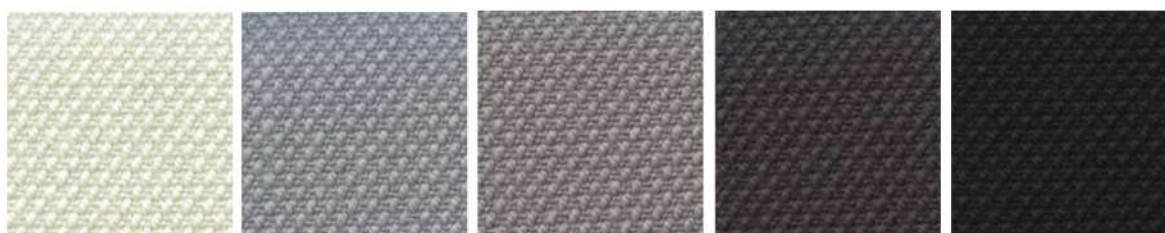
220

240

365

605

655



110

140

155

180

190

- Composition: 90% New wool worsted - 10% Nylon
- Abrasion: 100.000 Martindale rubs, EN ISO 12947
- Lightfastness: Note 5-7, ISO 105-B02
- AS/NZS 1530.3, BS 5852 crib 5 with treatment, BS 5852 part 1, IMO FTP Code 2010 Part 8, NF D 60 013, NFPA 260, SN 198 898 5.3 with treatment, UNI 9175 1IM, US Cal. Bull. 117-2013, EN 1021-1/2, AS/NZS 3837 class 2, ÖNORM B1/Q1, ASTM E84 Class A Unadhered, ASTM E84 Class B Adhered

Visit [www.kvadrat.dk](http://www.kvadrat.dk) for complete colours range / Visionate la completa gamma colori su [www.kvadrat.dk](http://www.kvadrat.dk)

**DK Kvadrat Fabric (Remix3) / Tessuto Kvadrat (Remix3)**



733

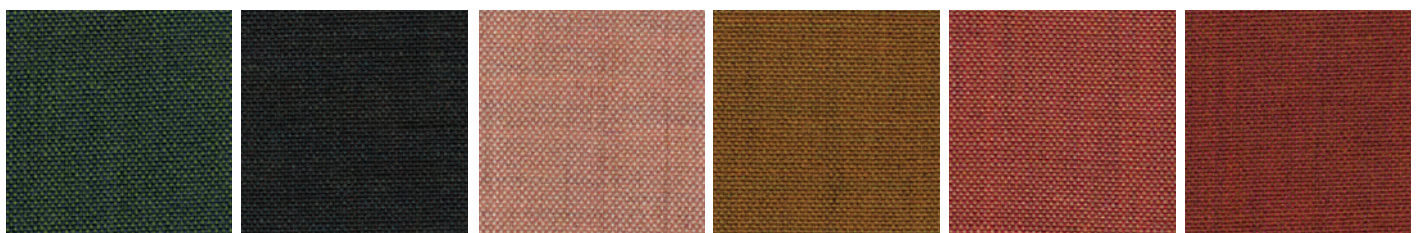
722

743

753

923

942



982

973

612

422

632

653



682

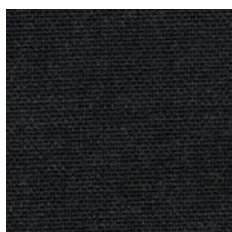
692

233

113

123

143



183

- Composition: 90% wool, 10% nylon
- Abrasion: Approximately 100.000 Martindale rubs, EN ISO 12947
- Lightfastness: Note 5-7, ISO 105-B02
- AS/NZS 1530.3, BS 5852 crib 5 with treatment, BS 5852 ignition source 3, BS 5852 part 1, IMO FTP Code 2010 Part 7 with treatment, IMO FTP Code 2010 Part 8, NF D 60 013, NFPA 260, SN 198 898 5.3 with treatment, UNI 9175 1IM, US Cal. Bull. 117-2013, EN 1021-1/2, AS/NZS 3837 class 2, ÖNORM B1/Q1, ASTM E84 Class A Unadhered, ASTM E84 Class A Adhered, GB 50222 B1 with treatment

Visit [www.kvadrat.dk](http://www.kvadrat.dk) for complete colours range / Visionate la completa gamma colori su [www.kvadrat.dk](http://www.kvadrat.dk)

# COLOURS AND FINISHES COLORI E FINITURE



## S Superb Trevira Fabric / Tessuto Velvet-Velluto



5130

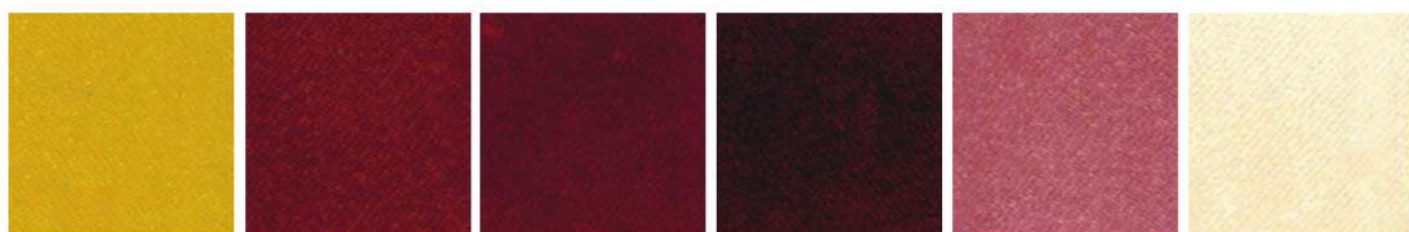
5127

5131

5140

5134

5135



5106

5112

5118

5119

5114

5103



5144

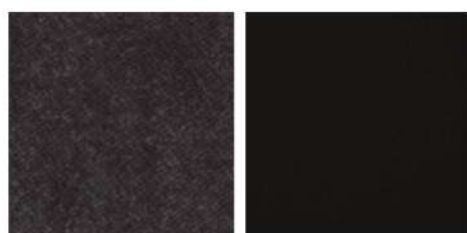
5143

5149

5142

5145

5152



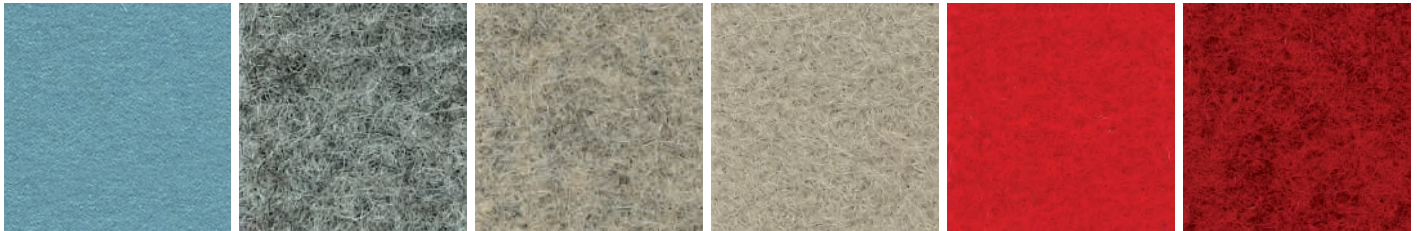
5151

5147

- Composition: 100% POLYESTER - TREVIRA CS
- Abrasion: UNI EN ISO 12947-2 100.000 Cycles
- Light Resistance-Xenotest: UNI EN ISO 105-B02  $\geq 5$  Blue Scale
- Fire proof: UNI 8456 - 9174 classe 1, UNI 9175 classe 11M ,EN 1021-1 EN 1021-2, BS 5852 crib 5, DIN 4102 B1, NF P 92 503-507 M1, TB 117:2013 UNI EN 13773:2004 classe 1, NFPA 701:2015
- Maintenance: Dust gently or pass the surface with a damp cloth.

Visit [www.flukso.it](http://www.flukso.it) for complete colours range / Visionate la completa gamma colori su [www.flukso.it](http://www.flukso.it)

## B Blazer Fabric / Tessuto Blazer



CUZ22

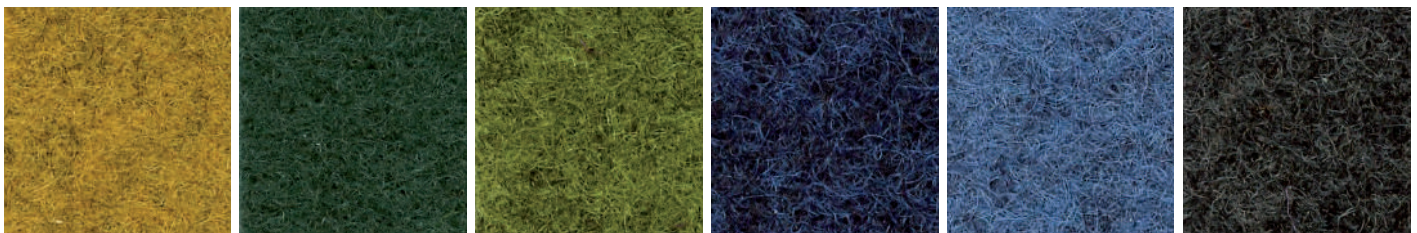
CUZ1E

CUZ86

CUZ47

CUZ18

CUZ63



CUZ82

CUZ1N

CUZ1K

CUZ62

CUZ1W

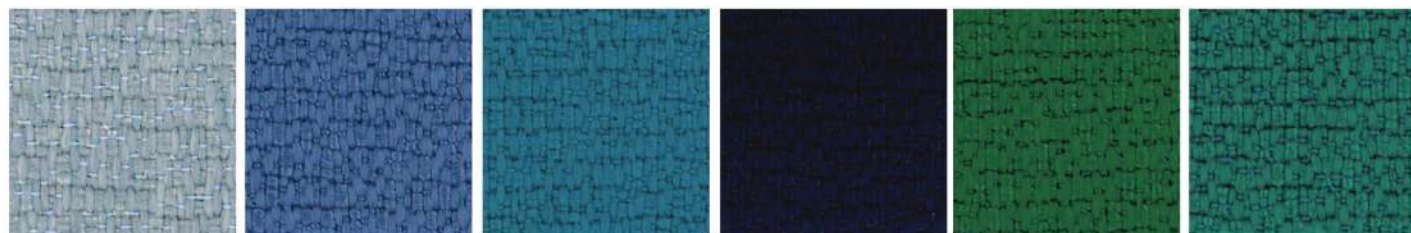
CUZ67

- Composition: 100% VIRGIN WOOL
- Abrasion: BS EN ISO 12497-2 65.000 Cycle Martindale
- Light Resistance-Xenotest: UNI EN ISO 105-B02 / 5
- Fire proof: BS EN 1021 Part 1, BS EN 1021 Part 2, BS 7176 Low Hazard, BS EN 13501-1:2007 Class D, NF D 60-013 AM18, UNI 9175:2010 Class 1IM, BS476 part 7 Class 1, ONORM B 3825, IMOFTP Code (part 8)
- Maintenance: Use the vacuum-cleaner.

Visit [www.camirafabrics.com](http://www.camirafabrics.com) for complete colours range / Visionate la completa gamma colori su [www.camirafabrics.com](http://www.camirafabrics.com)

# COLOURS AND FINISHES COLORI E FINITURE

FO Fortezza 93 Fabric / Tessuto Fortezza 93



30-1

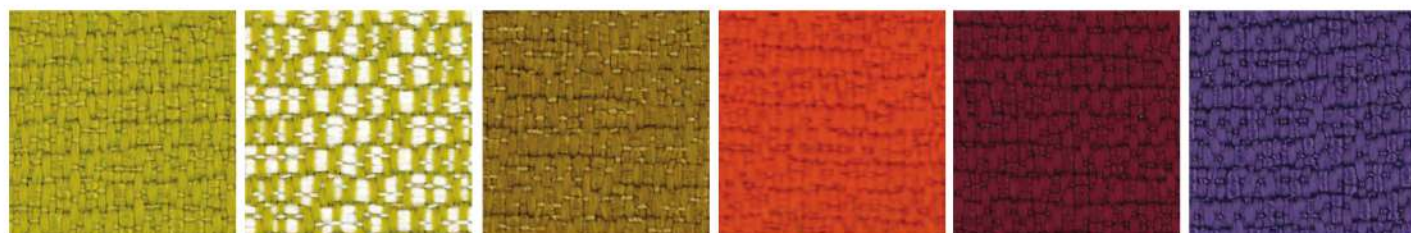
67-1

44-1

46-1

65-1

56-1



43-1

43-2

48-1

47-1

69-1

68-1



23-1

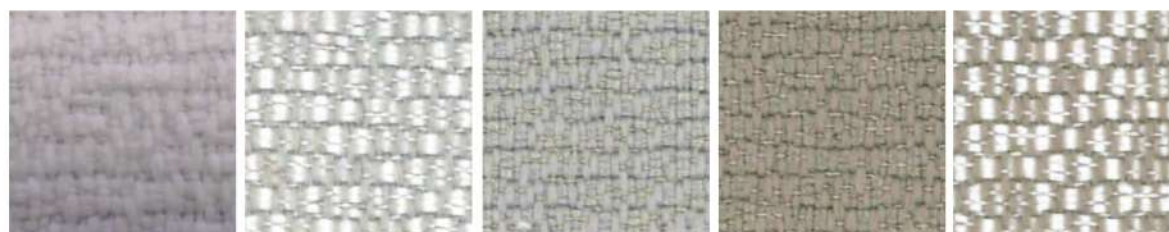
66-1

24-1

41-1

64-1

42-1



38-1

39-2

39-1

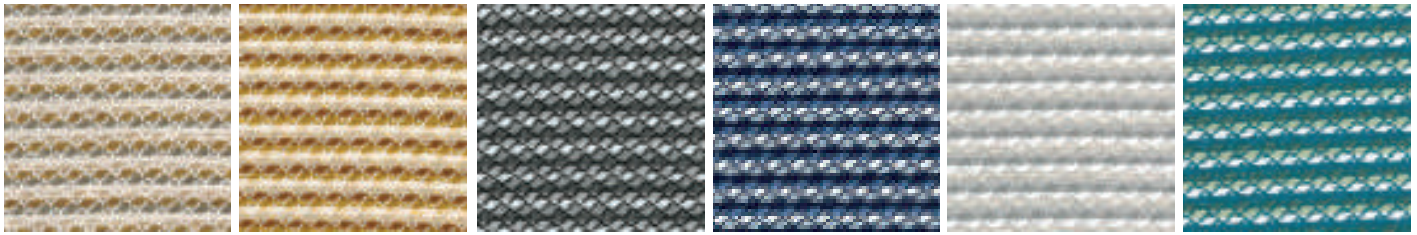
17-1

17-2

- Composition: 100% Polyolefinic
- Abrasion: UNI EN ISO 12947 35.000 rubs/cicli
- Seam slippage: BS 2543
- Pilling: UNI EN ISO 12945-2
- Colour fastness Dry Rubbing: UNI EN ISO 105-X12
- Colour fastness Wet Rubbing: UNI EN ISO 105-X12
- Light Fastness: UNI EN ISO 105-B02, UNI EN ISO 105-B04
- Colour Fastness to Sea Water: UNI EN ISO 105:E02:1996
- Colour Fastness to Chlorinated Water: UNI EN ISO 105:E03:2010
- Fire proof: UNI 8456 - 9174 - CLASS 1 - ITALIAN FIRE SAFETY CLASSIFICATION - PASS BS EN 1021.1 : 1994 - SOURCE 0 - CIGARETTE TEST - PASS BS EN 1021.2 : 1994 - SOURCE 1 - BUTANE FLAME - PASS ON FR FOAM T.B. 117 (2013); SECTION 1 POSITIVE B1 ACCORDING TO DIN 4102, PART 1 (MAY 1998) NFPA 260:2013 - CLASS 1 IMO 2010 FTP CODE PART 8 - Resolution MSC 307(88) - Cigarette and Match Test EN 13773 (2004) CLASSE 1

Visit [www.primafabrics.it](http://www.primafabrics.it) for complete colours range / Visionate la completa gamma colori su [www.primafabrics.it](http://www.primafabrics.it)

## FO Fortezza 9042 Fabric / Tessuto Fortezza 9042



T0-1

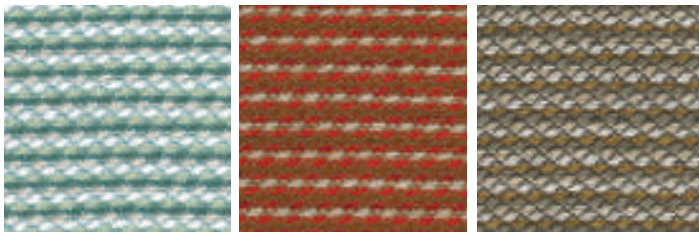
T0-2

T5-1

T8-1

T39-1

T44-1



T85-4

T100-1

T101-1

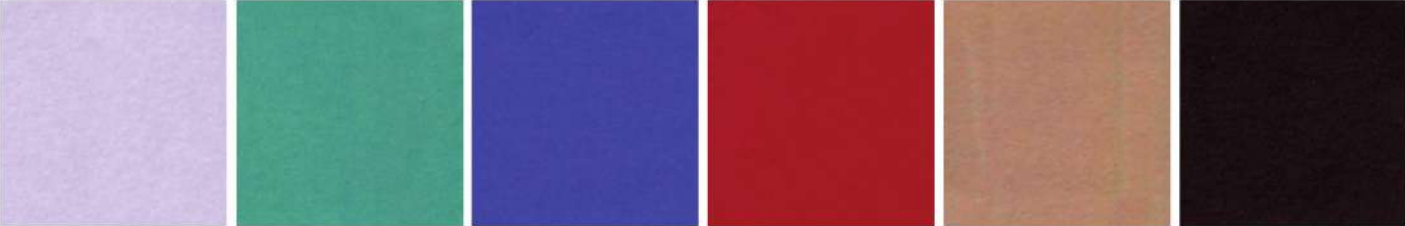
- Composition: 100% Polyolefinic
- Abrasion: UNI EN ISO 12947 35.000 rubs/cicli
- Seam slippage: BS 2543
- Pilling: UNI EN ISO 12945-2
- Colour fastness Dry Rubbing: UNI EN ISO 105-X12
- Colour fastness Wet Rubbing: UNI EN ISO 105-X12
- Light Fastness: UNI EN ISO 105-B02, UNI EN ISO 105-B04
- Colour Fastness to Sea Water: UNI EN ISO 105:E02:1996
- Colour Fastness to Chlorinated Water: UNI EN ISO 105:E03:2010
- Fire proof: UNI 8456 - 9174 - CLASS 1 - ITALIAN FIRE SAFETY CLASSIFICATION - PASS BS EN 1021.1 : 1994 - SOURCE 0 - CIGARETTE TEST - PASS BS EN 1021.2 : 1994 - SOURCE 1 - BUTANE FLAME - PASS ON FR FOAM T.B. 117 (2013): SECTION 1 POSITIVE B1 ACCORDING TO DIN 4102, PART 1 (MAY 1998) NFPA 260:2013 - CLASS 1 IMO 2010 FTP CODE PART 8 - Resolution MSC 307(88) - Cigarette and Match Test EN 13773 (2004) CLASSE 1

Visit [www.primafabrics.it](http://www.primafabrics.it) for complete colours range / Visionate la completa gamma colori su [www.primafabrics.it](http://www.primafabrics.it)

# COLOURS AND FINISHES

## COLORI E FINITURE

### M Miki Fabric / Tessuto Miki



6445

6490

6713

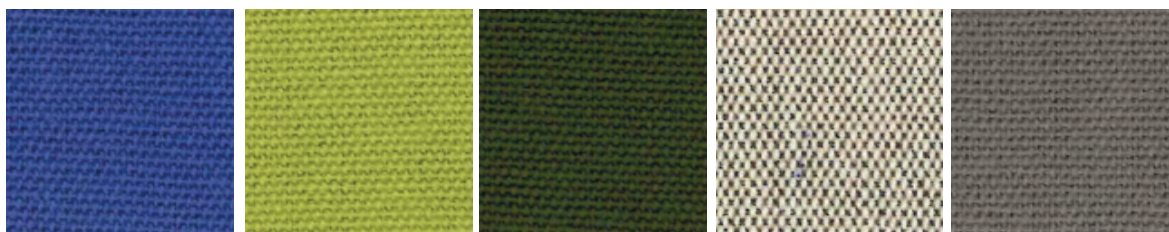
6432

6334

NERO

- Composition: Composizione 100% PL 65/75 g/m<sup>2</sup> – Composition 100% PL 65/75 g/m<sup>2</sup>
- Light Resistance-Xenotest: UNI EN ISO 105-B02 / 01
- Maintenance: Dust with a soft and dry cloth.

## GR Progarden Fabric / Tessuto Progarden



**051**  
MEDITERRANEAN BLUE

**026**  
PISTACHIO

**028**  
OLIVE GREEN

**012**  
LINEN

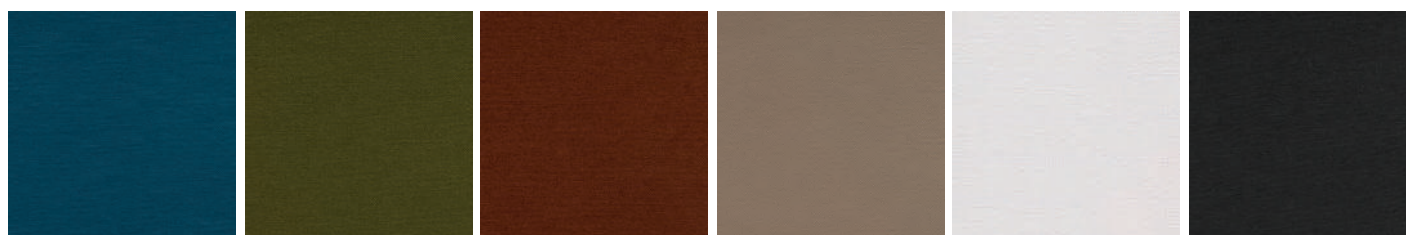
**683**  
SLATE

- Composition: 100% yarn dyed acrylic
- Martindale (ISO 12947-2): 15.000 cycles
- Dimensional change after washing at 40°C and drying (warp/weft) (ISO 5077): ± 2%/0%
- Breaking strength (warp/weft) (ISO 13934-1): 200/70 daN
- Elongation at break (warp/weft) (ISO 13934-1): 25%/25%
- Tear strength (warp/weft) (ISO 13937-1): 7/3,7 daN
- Resistance to seam (warp/weft) (ISO 13935-1): 50/50 daN

- Air permeability (ISO 9237): 65 l/m<sup>2</sup>/s
- Finishing: Water repellent Teflon/Scotchgard treatment, dirt repellent and anti-mould treatment
- Spray Test (ISO 4920): 4 out of 5
- UV Colour fastness (ISO 105 B02): 5/8 out of 8
- Colour fastness to weather (ISO 105 B04): 5/8 out of 8
- Colour fastness after washing at 40°C (ISO 105 C06): 5 out of 5

Visit [www.giovanardi.com](http://www.giovanardi.com) for complete colours range / Visionate la completa gamma colori su [www.giovanardi.com](http://www.giovanardi.com)

## SX Silvertex Fabric / Tessuto Silvertex



**3066**  
BALTIC

**5020**  
BASIL

**1014**  
UMBER

**0002**  
SANDSTONE

**4004**  
ICE

**4003**  
GRAPHITE

- Composition: 100% Vinyl / Polyester Backing
- Abrasion: >300.000 cycles Martindale (EN ISO 12947:1999 Part 2)
- UV Resistance: ISO 105 B04 ≥ 4/5 (Grey Scale), ISO 105 B02 ≥ 7/8 (Blue Wool Scale)
- Flame Retardancy: EU: EN 1021 Part 1 & 2

DE: DIN 4102 B2 ECE Regulation No.118:03 (R118.02 Annexes 6, 7 & 8), ES: UNE 23.727-90 1R/M.2, FR: NF P 92-503/M2, IT: UNI 9175 (1987) / UNI 9175/FA1 (1994) Classe 1.1M (UNO I EMME), AT: ÖNORM B 3825, Gruppe 1 - Schwerbrennbares Verhalten, AT: ÖNORM A 3800 Teil 1, Qualmbildungsklasse Q1 - schwachqualmend, IMO FTP 2010 Code MSC.307 (88) Part 8 3.1 & 3.2, (MED) Marine Equipment Directive (in its current valid version), EN 71-2:2006+A1:2007 - Safety of Toys - Parte 2: Flammability, US: CAL TB 117-2013, Section E, FMVSS 302, FAR 25/853

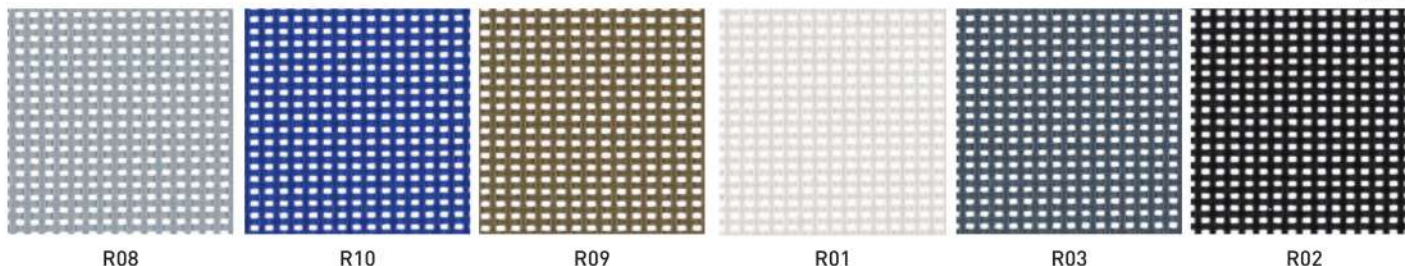
- Fire proof: NF P 92-503 / M2, EN 1021, Part 1 & 2, DIN 4102 B2, ÖNORM B 3825, Gruppe 1 - Schwerbrennbares Verhalten, ÖNORM A 3800, Teil 1, Qualmbildungsklasse Q1 --- schwachqualmend IMO FTP 2010 Code MSC.307 (88), Part 8,3.1 & 3.2, (MED) Council Directive 96/98 EC (Starting 09/2016: Directive 2014/90/EU), UNI 9175 (1987) / UNI 9175/FA1 (1994) Classe 1.1M (uno I EMME), UNE 23.727-90 1R/M.2, EN 71-2: 2006+A1: 2007 Safety of Toys - Part 2: Flammability, ECE R 118 (replaces Directive 95/28/EC), FMVSS 302, FAR 28/853

Visit [www.spradling.eu](http://www.spradling.eu) for complete colours range / Visionate la completa gamma colori su [www.spradling.eu](http://www.spradling.eu)

# COLOURS AND FINISHES

## COLORI E FINITURE

### R Mesh Fabric / Tessuto Rete



R08

R10

R09

R01

R03

R02

- Composition: Polyvinyl 70% - Polyester 30%
- Warp Tensile Strength: 310Kg/5cm
- Weft Tensile Strength: 270Kg/5cm
- Fire retardant on request

Visit [www.plastitex.com](http://www.plastitex.com) for complete colours range / Visionate la completa gamma colori su [www.plastitex.com](http://www.plastitex.com)

### MG Maglia Vinyl Fabric / Tessuto Maglia Vinile



0003

0406

4203

5001

6025

4537



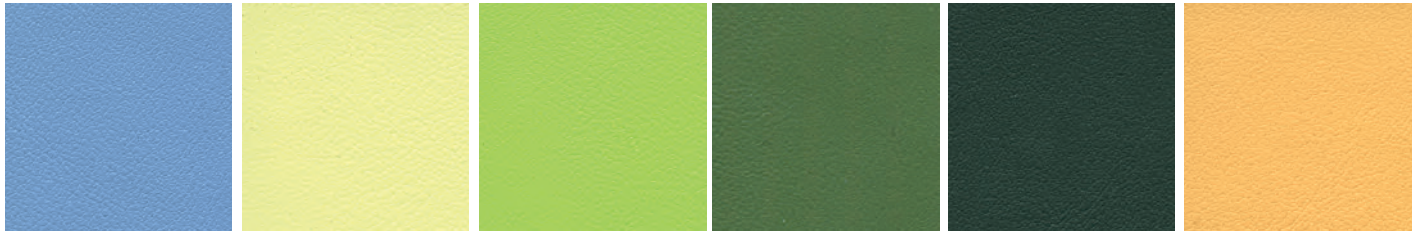
1702

6016

- Composition: Vinyl 100%
- Abrasion: >100.000 cycles Martindale (EN ISO 12947:1999 Part 2)
- Fire Proof: EN 1021 Part 1 & 2, UNE 23.727-90 1R/M.2, NF P 92-503/M2, DIN 4102 B2, UNI 9175 (1987) / UNI 9175/FA1 (1994) Classe 1.IM (UNO I EMME), ÖNORM B 3825, Gruppe 1 - Schwerbrennbares Verhalten, ÖNORM A 3800 Teil 1, Qualmbildungsklasse Q1 - schwachqualmend, IMO FTP 2010 Code MSC.307 (88) Part 8 3.1 & 3.2, FMVSS 302, US: FAR 25/853, (MED) Marine Equipment Directive (in its current valid version), ECE R118.02 (replaces Directive 95/28/CE) Annexes 6, 7 & 8, EN 71-2:2006+A1:2007 - Safety of Toys - Parte 2: Flammability, CAL TB 117-2013, Section E
- Light Resistance: UV-Resistance XENOTEST DIN 54004/ NTC 1479

Visit [www.spradling.eu](http://www.spradling.eu) for complete colours range / Visionate la completa gamma colori su [www.spradling.eu](http://www.spradling.eu)

## E Simil leather Aurea / Ecopelle Aurea



23

7

14

15

16

8



9

10

17

19

21

11

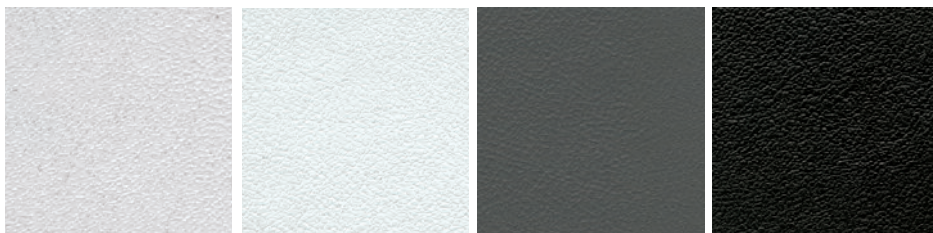


2

3

5

6



1

22

28

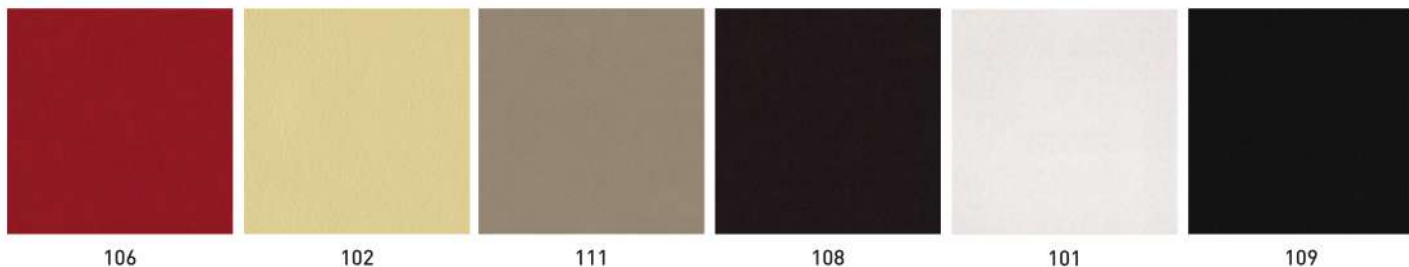
26

- Composition: 72% PVC - 3% PU - 25% COTTON
- Abrasion: EN ISO 5470-2 100.000 Cycle Martindale
- Light Resistance-Xenotest: UNI EN ISO 105-B02 / 6
- Fire proof: UNI 9175 classe 1IM, EN 1021-1, EN 1021-2, BS 5852-1 cigarette test, BS 5852-1 match test  
BS 5852 crib 5, TB 117:2013, IMO res. A.652(16)
- Maintenance: Dust gently or pass the surface with a damp cloth.

Visit [www.flukso.it](http://www.flukso.it) for complete colours range / Visionate la completa gamma colori su [www.flukso.it](http://www.flukso.it)



### C Leather / Cuoio



- Composition: 100% Grain Leather, Italian tannery
- Light Resistance: IUF/101
- Fire proof: CAL TB 117-00, Section E -part 1; BS 5852/90 section 4 (CRIB 5); UNI 91/75 Classe 2IM
- Maintenance: Dust gently or pass the surface with a damp cloth.



### P Leather / Pelle



106P      102P      111P      110P      108P



101P      112P      109P

- Composition: 100% Top Grain Leather, European tannery
- Light Resistance-Xenotest: UNI EN ISO 105-B02
- Fire proof: British Standard BS 5852 Part 1 (1979), Imo FTP:Part 8-Resolution A.652 (16), TB 117-A11@20132013 Cigarette Test (California)
- Maintenance: Dust with a soft and dry cloth.

Visit [www.anicaleather.com](http://www.anicaleather.com) for complete colours range / Visionate la completa gamma colori su [www.anicaleather.com](http://www.anicaleather.com)