



10year
warranty

Ono

Struttura metallica

gamba metallica: costituita da un profilo trapezoidale in alluminio estruso, finitura ossidata e spazzolata (per la versione bronzo o alluminio), o verniciata a polveri epossidiche finitura gofrata (per la versione nera). La gamba è dotata di piedino che permette una regolazione di +10 mm per il livellamento a pavimento.

telaio strutturale: costituito da 4 travi a sezione rettangolare in metallo verniciato a polveri epossidiche finitura gofrata colore nero RAL 9005.

Per irrigidire la struttura trasversalmente, sono previste 2 travi aggiuntive poste centralmente in metallo. Lo spazio centrale tra le travi può essere integrato di una vasca in metallo. Il telaio perimetrale è nascosto da una cornice di finitura, composta da due carter assemblati e realizzati in alluminio estruso con la stessa finitura delle gambe.

Piano

melaminico: in truciolare sp. 18 mm (densità 720 kg/m³, emissione di formaldeide classe E1, soddisfa i requisiti previsti dal CARB), nobilitato con resine melaminiche antiriflesso e bordato in ABS (sp. 2 mm con spigoli raggati).

impiallacciato: in truciolare sp. 20 mm (densità 720 kg/m³, emissione di formaldeide classe E1, soddisfa i requisiti previsti dal CARB), placcato ambo i lati con impiallacciatura di legno naturale, verniciati sul lato a vista, grezzo sul lato contro faccia. Il bordo perimetrale è in tranciato di legno sp. 2 mm.

Hpl: realizzato con pannello in truciolare (densità 720 kg/m³, emissione di formaldeide classe E1, soddisfa i requisiti previsti dal CARB), sp. 19 mm, placcato sul lato superiore con laminato ad alta pressione (Hpl) sp. 0,8 mm. Il pannello viene bordato in ABS in tinta di sp. 1 mm con spigoli raggati. Spessore totale 20 mm. Non previsto per i piani a formelle.

Piano a formelle con sliding top

Le formelle possono essere realizzate in melaminico, in impiallacciato oppure in mdf (sp. 20 mm) rivestito in ecopelle. Il piano è provvisto di un profilo concavo in alluminio spazzolato o verniciato, sul quale sono presenti due aperture che garantiscono la fuoriuscita dei cavi. La formella centrale del piano scrivania è mobile, montata su due guide metalliche che permettono lo scorrimento della stessa verso l'operatore (sliding-top). Il piano scorrevole è provvisto di dispositivo di sicurezza per apertura e chiusura. L'escursione del piano è di 130 mm, lato utilizzatore, per consentire l'ispezione della vasca di cablaggio.

Gonna

melaminico: in truciolare sp. 18 mm (densità 720 kg/m³, emissione di formaldeide classe E1, soddisfa i requisiti previsti dal CARB), nobilitato con resine melaminiche antiriflesso e bordato in ABS (sp. 2 mm con spigoli raggati).

impiallacciato: in truciolare sp. 19 mm (densità 720 kg/m³, emissione di formaldeide classe E1, soddisfa i requisiti previsti dal CARB), placcato ambo i lati con impiallacciatura di legno naturale e bordato in legno sp. 2 mm.

ecopelle: in mdf, sp. 19 mm, rivestito in ecopelle.

Disponibile in due altezze 32 o 55 cm.

Metal structure

aluminium leg: consisting of an extruded aluminium trapezoidal profile with an anodised and brushed finish (for bronze and aluminium version) or epoxy painted with embossed finish (for black version). The legs are equipped with adjustment feet (+10 mm) for floor levelling.

structural frame: made by 4 metal beams having rectangular section with an epoxy powder-coated embossed finish in black colour RAL 9005. To reinforce the structure other 2 metal beams are provided longitudinally. When applicable, in the central space between these 2 beams a metal tray is fitted to contain plugs and cables. The perimetral frame is hidden by a cover composed by 2 aluminium extruded carters, mounted together, with the same finish as the legs.

Top

melamine: 18 mm thick chipboard (density 720 kg/m³, formaldehyde emission class E1, meets CARB requirements), faced with anti-reflex melamine resins and edged with ABS (2 mm thick with rounded edges).

veneer: 20 mm thick chipboard (density 720 Kg/m³, formaldehyde emission class E1, meets the CARB requirements) veneered on both faced with solid wood veneer thickness 2 mm. Finish paint applied on the visible side. Edged with solid wood veneer thickness 2 mm.

Hpl: made of 19 mm thick chipboard panel (density 720 kg/m³, formaldehyde emission E1, meets CARB requirements), plated on the upper side with 0.8 mm thick high-pressure laminate (Hpl). The panel is edged with 1 mm thick ABS with rounded edges. Total thickness 20 mm.

Top divided in tiles with one sliding on rails

The desktop can be composed in tiles made in melamine, veneer or in mdf upholstered with eco-leather. A concave profile in brushed or painted aluminium is foreseen in the desk top. On such profile, two openings ensure the cables passage. The central tile of the desk top can slide on metallic rails towards the inside of the desk (sliding-top). Such 130 mm slide allows the inspection of the cable tray. The sliding function is equipped with latch system to lock it.

Modesty panel

melamine: 18 mm thick chipboard (density 720 kg/m³, formaldehyde emission class E1, meets CARB requirements), faced with anti-reflex melamine resins and edged with ABS (2 mm thick with rounded edges).

veneer: 20 mm thick chipboard (density 720 Kg/m³, formaldehyde emission class E1, meets the CARB requirements), veneered on both sides with solid wood veneer thickness 2 mm.

eco-leather: support in mdf, upholstered on both faces with eco-leather.

Available in two heights 12"5/8 or 21"5/8.

Structure métallique

piètement métallique: constitué d'un profil trapézoïdal en aluminium extrudé, finition oxydée et brossée (pour la version bronze ou aluminium), ou peint avec des poudres époxy avec finition gaufrée (pour la version noire). Le piètement est équipé d'un pied qui permet un réglage de +10 mm pour la mise à niveau du sol.

châssis structurel: composé de 4 poutres de section rectangulaire en métal, peint avec des poudres époxy avec finition gaufrée avec finition gaufrée de couleur noire RAL 9005. Pour rendre la structure plus rigide, 2 autres poutres métalliques sont fixées en croix. Dans la version qui le prévoit, une goulotte câblage en métal est fixée dans le compartiment central entre ces deux poutres, destinée à accueillir les prises et les câbles. Le châssis métallique périphérique est dissimulé par un cadre de finition, composé de deux boîtiers assemblés en aluminium extrudé avec la même finition que les piètements.

Plateau

mélamine: réalisé en aggloméré ép. 18 mm (densité 720 kg/m³, classe d'émission de formaldéhyde E1, conforme aux exigences CARB), recouvert de résines mélaminées antireflet et bordé en ABS (ép. 2 mm avec bords arrondis).

bois: réalisé en aggloméré ép. 20 mm (densité 720 kg/m³, classe d'émission de formaldéhyde E1, conforme aux exigences CARB), plaqué sur les deux faces avec du bois naturel et peint sur la face visible, brut sur l'envers. Le bord du périmètre est constitué d'un placage de bois de 2 mm d'épaisseur.

Hpl: composé d'un panneau d'aggloméré de 19 mm d'épaisseur (densité 720 kg/m³, émission de formaldéhyde E1, conforme aux exigences CARB), plaqué sur le côté supérieur d'un stratifié en haute pression (Hpl) de 0,9 mm d'épaisseur. Le panneau est bordé d'ABS de 1 mm d'épaisseur avec bords arrondis. Totale épaisseur totale 20 mm.

Plateau avec panneau central mobile

Les panneaux peuvent être réalisés en mélamine, en placage ou en mdf (ép. 20 mm) revêtu en simili-cuir. Le plateau est pourvu d'un profil porte-stylo en aluminium brossé ou peint selon la finition du pied. Sur le profilé se trouvent deux ouvertures qui garantissent la sortie des câbles. Le panneau central du plateau est mobile, monté sur deux guides métalliques qui lui permettent de glisser vers l'opérateur (sliding-top). Le plateau coulissant est équipé d'un dispositif de sécurité pour l'ouverture et la fermeture. L'excursion du plateau est de 13 cm pour permettre l'inspection du plateau de câblage.

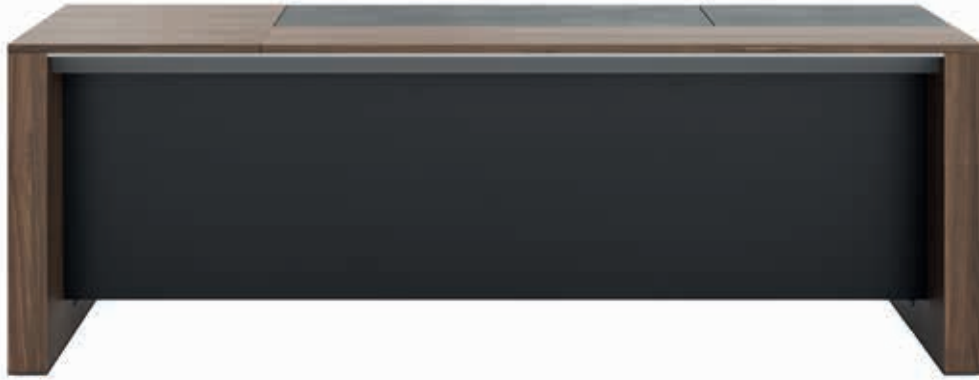
Voile de fond

mélaminé: réalisé en aggloméré ép. 18 mm (densité 720 kg/m³, classe d'émission de formaldéhyde E1, conforme aux exigences CARB), recouvert de résines mélaminées antireflet et bordé en ABS (ép. 2 mm avec bords arrondis).

bois: réalisé en aggloméré ép. 20 mm (densité 720 kg/m³, classe d'émission de formaldéhyde E1, conforme aux exigences CARB), plaqué sur les deux faces avec un placage de bois naturel et bordé de bois de 2 mm d'épaisseur.

simili-cuir: réalisé en mdf de 19 mm d'épaisseur, revêtu en simili-cuir.

Disponible en deux hauteurs, 32 ou 55 cm.



10year
warranty

Ono

Struttura pannellata

gamba pannellata in melaminico: spessore complessivo 90 mm, composta da un unico pannello in truciolare (densità 720 kg/m³, emissione di formaldeide classe E1, soddisfa i requisiti previsti dal CARB), sp. 18 mm, nobilitato con resine melaminiche antiriflesso e bordato in ABS sp. 2 mm, lavorata con tecnologia folding. La parte interna della gamba è dotata di due fori Ø 80 mm centrali (uno in alto e uno in basso) chiusi da un tappo passacavi per il passaggio dell'elettrificazione. La gamba è dotata di due piedini che permettono una regolazione di +10 mm per il livellamento a pavimento.

gamba pannellata in impiallacciato: spessore complessivo 90 mm, realizzata con due pannelli in truciolare di pioppo, sp. 19 mm, posti ad una distanza tra loro di 50 mm e chiusi ai lati da traversi in mdf alleggerito sp. 50 mm, a formare un telaio chiuso. Tutti i pannelli sono placcati ambo i lati con impiallacciatura di legno naturale e bordati in legno sp. 2 mm. La cavità interna è tamponata da alveolari in cartone, tranne la parte centrale dove è prevista la discesa dell'elettrificazione. Il lato interno della gamba è dotata di due fori Ø 80 mm centrali (uno in alto e uno in basso) chiusi da un tappo passacavi per il passaggio dei cavi. La gamba è dotata di due piedini che permettono una regolazione manuale di +10 mm per il livellamento a pavimento.

telaio perimetrale: costituito da 4 travi a sezione rettangolare in metallo verniciato con polveri epossidiche finitura gofrata colore nero RAL 9005. Per irrigidire la struttura, trasversalmente, vengono fissate altre 2 travi in metallo. Nella versione che lo prevede, nello spazio centrale tra le due travi, viene fissata una vasca per l'elettrificazione in metallo, predisposta per l'alloggio di prese e cavi. Il telaio metallico perimetrale è nascosto da una cornice di finitura, composta da due carter assemblati e realizzati in alluminio estruso.

Gonna strutturale

melaminico: in truciolare sp. 18 mm (densità 720 kg/m³, emissione di formaldeide classe E1, soddisfa i requisiti previsti dal CARB), nobilitato con resine melaminiche antiriflesso e bordato in ABS (sp. 2 mm con spigoli raggiati).

impiallacciato: in truciolare sp. 19 mm (densità 720 kg/m³, emissione di formaldeide classe E1, soddisfa i requisiti previsti dal CARB), placcato ambo i lati con impiallacciatura di legno naturale e bordato in legno sp. 2 mm.

ecopelle: in mdf, sp. 19 mm, rivestito in ecopelle.

Piano

melaminico: in truciolare sp. 18 mm (densità 720 kg/m³, emissione di formaldeide classe E1, soddisfa i requisiti previsti dal CARB), nobilitato con resine melaminiche antiriflesso e bordato in ABS (sp. 2 mm con spigoli raggiati).

impiallacciato: in truciolare sp. 20 mm (densità 720 kg/m³, emissione di formaldeide classe E1, soddisfa i requisiti previsti dal CARB), placcato ambo i lati con impiallacciatura di legno naturale e verniciati sul lato a vista, grezzo sul lato contro faccia. Il bordo perimetrale è in tranciato di legno sp. 2 mm.

Piano a formelle con sliding top

Le formelle possono essere realizzate in melaminico, in impiallacciato oppure in mdf (sp. 20 mm) rivestito in ecopelle. Il piano è provvisto di un profilo concavo in alluminio spazzolato o verniciato, sul quale sono presenti due aperture che garantiscono la fuoriuscita dei cavi. La formella centrale del piano scrivania è mobile, montata su due guide metalliche che permettono lo scorrimento della stessa verso l'operatore (sliding-top). Il piano scorrevole è provvisto di dispositivo di sicurezza per apertura e chiusura. L'escursione del piano è di 130 mm, lato utilizzatore, per consentire l'ispezione della vasca di cablaggio.

Panelled structure

melamine-panelled leg: total thickness of 90 mm, composed of a single 18 mm thick chipboard panel (density 720 kg/m³, formaldehyde emission class E1, meets CARB requirements), faced with anti-reflex melamine resins and edged with 2 mm thick ABS, manufactured using folding technology. The inner part of the leg has two central 80 mm diameter holes (one at the top and one at the bottom) closed by a cable lid for cable passage. The leg is equipped with two adjustable feet (+ 10 mm) for floor levelling.

veneer-panelled leg: total thickness of 90 mm, made of two 19 mm thick poplar chipboard panels placed at a distance of 50 mm from each other and closed at the sides by 50 mm thick lightened MDF beams to form a closed frame. All panels are veneered on both sides with natural wood veneer and edged with 2 mm thick wood. The inner cavity is filled with cardboard hollow blocks, except for the central part which is equipped for cable descent. The inner side of the leg is provided with two central 80 mm diameter holes (one at the top and one at the bottom) closed by a cable lid for cable passage. The leg is equipped with two adjustable feet (+ 10 mm) for floor levelling.

perimetral frame: made by 4 metal beams having rectangular section with an epoxy powder-coated embossed finish in black colour RAL 9005. To reinforce the structure other 2 metal beams are provided longitudinally. When applicable, in the central space between these 2 beams a metal cable tray is fitted to contain plugs and cables. The perimetral frame is hidden by a cover composed by 2 aluminium extruded carters mounted together.

Structural modesty panel

melamine: 18 mm thick chipboard (density 720 kg/m³, formaldehyde emission class E1, meets CARB requirements), faced with anti-reflex melamine resins and edged with ABS (2 mm thick with rounded edges).

veneer: 19 mm thick chipboard (density 720 Kg/m³, formaldehyde emission class E1, meets the CARB requirements), veneered on both sides with solid wood veneer thickness 2 mm.

eco-leather: mdf support, upholstered on both faces with eco-leather.

Top

melamine: 18 mm thick chipboard (density 720 kg/m³, formaldehyde emission class E1, meets CARB requirements), faced with anti-reflex melamine resins and edged with ABS (2 mm thick with rounded edges).

veneer: 20 mm thick chipboard (density 720 Kg/m³, formaldehyde emission class E1, meets the CARB requirements), veneered on both faced with solid wood veneer thickness 2 mm. Finish paint applied on the visible side. Edged with solid wood veneer thickness 2 mm.

Desk top divided in tiles with one sliding on rails

The desk top can be composed in tiles made in melamine, veneer or in mdf covered with eco-leather. A concave profile in brushed or painted aluminium is foreseen in the desk top. On such profile, two openings ensure the cables passage. The central tile of the desk top can slide on metallic rails towards the inside of the desk (sliding-top). Such 130 mm slide allows the inspection of the cable tray. The sliding function is equipped with latch system to lock it.

Structure pieds panneaux

pieds panneaux en mélamine: épaisseur totale de 90 mm, réalisé avec un seul panneau en aggloméré de 18 mm d'épaisseur (densité 720 kg/m³, classe d'émission de formaldéhyde E1, conforme aux exigences CARB), recouvert de résines mélaminées antireflet et bordé en ABS de 2 mm d'épaisseur, traité selon la technologie du pliage. La partie interne du pied comporte deux trous centraux de Ø 80 mm (un en haut et un en bas) fermés par un bouchon passe câbles pour le passage de l'électrification. Le piètement est équipé de deux pieds qui permettent un réglage de +10 mm pour la mise à niveau.

pieds panneaux en bois: épaisseur totale de 90 mm, composé de deux panneaux en aggloméré de peuplier de 19 mm d'épaisseur, placés à une distance de 50 mm l'un de l'autre et fermés sur les côtés par des traverses en MDF allégé de 50 mm d'épaisseur, formant un cadre fermé. Tous les panneaux sont revêtus sur les deux faces d'un placage de bois naturel et bordés d'un bois de 2 mm d'épaisseur. La cavité interne est remplie de nids d'abeilles en carton, à l'exception de la partie centrale où descend le système d'électrification. Le côté intérieur du pied comporte deux trous centraux de Ø 80 mm (un en haut et un en bas) fermés par un bouchon passe câbles pour le passage des câbles. Le piètement est équipé de deux pieds qui permettent un réglage de +10 mm pour la mise à niveau.

châssis périmétrique: composé de 4 poutres métalliques à section rectangulaire peint avec des poudres époxydiques avec finition gaufrée de couleur noire RAL 9005. Pour renforcer la structure, 2 autres poutres métalliques sont fixées transversalement. Dans la version qui le prévoit, une goulotte câblage en métal est fixé dans l'espace central entre les deux poutres, destiné à accueillir les prises et les câbles. Le châssis métallique périmétrique est dissimulé par un cadre de finition, composé de deux boîtiers assemblés en aluminium extrudé.

Voile de fond structurelle

mélamine: réalisé en aggloméré ép. 18 mm (densité 720 kg/m³, classe d'émission de formaldéhyde E1, conforme aux exigences CARB), recouvert de résines mélaminées antireflet et bordé en ABS (ép. 2 mm avec bords arrondis).

bois: réalisé en aggloméré ép. 19 mm (densité 720 kg/m³, classe d'émission de formaldéhyde E1, conforme aux exigences CARB), plaqué sur les deux faces avec un placage de bois naturel et bordé de bois de 2 mm d'épaisseur.

simili-cuir: réalisé en mdf de 19 mm d'épaisseur, revêtu en simili-cuir.

Plateau

mélamine: réalisé en aggloméré ép. 18 mm (densité 720 kg/m³, classe d'émission de formaldéhyde E1, conforme aux exigences CARB), recouvert de résines mélaminées antireflet et bordé en ABS (ép. 2 mm avec bords arrondis).

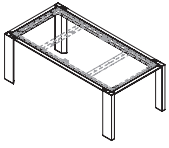
bois: réalisé en aggloméré ép. 20 mm (densité 720 kg/m³, classe d'émission de formaldéhyde E1, conforme aux exigences CARB), plaqué sur les deux faces avec du bois naturel et peint sur la face visible, brut sur l'envers. Le bord du périmètre est constitué d'un placage de bois de 2 mm d'épaisseur.

Plateau avec panneau central mobile

Les panneaux peuvent être réalisés en mélamine, en placage ou en mdf revêtu en simili-cuir. Le plateau est pourvu d'un profil porte-stylo en aluminium brossé ou peint selon la finition du pied. Sur le profilé se trouvent deux ouvertures qui garantissent la sortie des câbles. Le panneau central du plateau est mobile, monté sur deux guides métalliques qui lui permettent de glisser vers l'opérateur (sliding-top). Le plateau coulissant est équipé d'un dispositif de sécurité pour l'ouverture et la fermeture. L'excursion du plateau est de 13 cm pour permettre l'inspection du plateau de câblage.

Ono

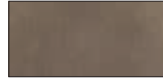
Struttura metallica
Metal structure
Structure métallique



AL - Alluminio - Aluminium - Aluminium



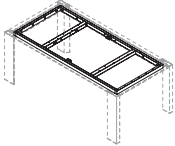
ZAL - Alluminio spazzolato
Brushed aluminium
Aluminium brossé



ZBR - Bronzo spazzolato
Brushed bronze
Bronze brossé



ZGNE - Verniciato goffrato nero
Black embossed painted
Verni gaufré noir
RAL 9005

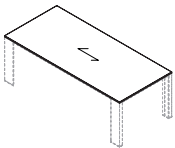


MET - Telaio in metallo - Metal frame - Châssis en métal



ZGNE - Verniciato goffrato nero
Black embossed painted
Verni gaufré noir
RAL 9005

Piano
Top
Plateau



sp./th. 18 mm

M - Melaminico - Melamine - Mélamine



MOB - Olmo chiaro
Light elm
Orme clair



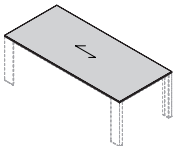
MRO - Rovere
Oak - Chêne



MNC - Noce
Walnut - Noyer



MFN - Frassino nero
Black ash
Frêne noir



sp./th. 20 mm

W - Legno - Veneer - Bois



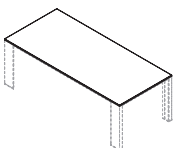
WBI - Frassino bianco
White ash
Frêne blanc



WNS - Noce scuro
Dark walnut
Noyer foncé



WFN - Frassino nero
Black ash
Frêne noir



sp./th 20 mm

HL - Hpl

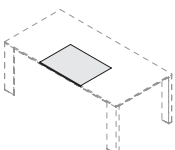


HLCB - Calacatta bianco
White Calacatta
Calacatta blanc



HLMZ - Marmo zebra marrone
Brown zebra marble
Marbre marron zébré

Sottomano in ecopelle
Eco-leather desk pad
Sous-main en simili-cuir



Cat. D (Skill) - Ecopelle - Eco-leather - Simili-cuir



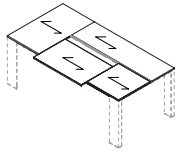
Cat. D - Skill

Ono

Piano a formelle con sliding top

Top divided in tiles with one sliding on rails

Plateau à sections avec section central coulissant



sp./th. 18 mm

M - Formelle in melaminico - Melamine tiles - Sections en mélamine



MOB - Olmo chiaro
Light elm
Orme clair



MRO - Rovere
Oak - Chêne



MNC - Noce
Walnut - Noyer



MFN - Frassino nero
Black ash
Frêne noir

W - Formelle in legno - Veneer tiles - Sections en bois



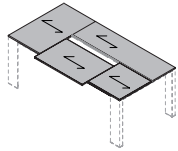
WBI - Frassino bianco
White ash
Frêne blanc



WNS - Noce scuro
Dark walnut
Noyer foncé



WFN - Frassino nero
Black ash
Frêne noir

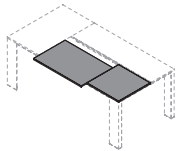


sp./th. 20 mm

Formelle in mdf rivestite in ecopelle - Eco-leather upholstered mdf tiles - Sections en mdf revêtu en simili-cuir



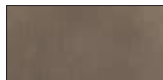
Cat. D - Skill



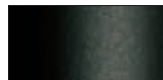
AL - Profilo in alluminio - Aluminium profile - Profil en aluminium



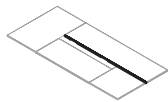
ZAL - Alluminio spazzolato
Brushed aluminium
Aluminium brossé



ZBR - Bronzo spazzolato
Brushed bronze
Bronze brossé

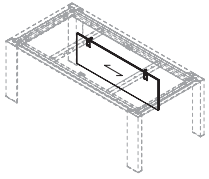


ZGNE - Verniciato goffrato nero
Black embossed painted
Verni gaufré noir
RAL 9005



Ono

Gonna
Modesty panel
Voile de fond



M - Melaminico - Melamine - Mélamine



MOB - Olmo chiaro
Light elm
Orme clair



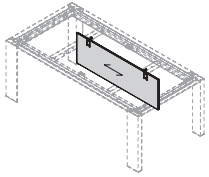
MRO - Rovere
Oak - Chêne



MNC - Noce
Walnut - Noyer



MFN - Frassino nero
Black ash
Frêne noir



W - Legno - Veneer - Bois



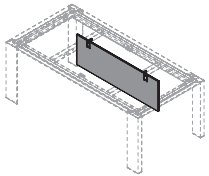
WBI - Frassino bianco
White ash
Frêne blanc



WNS - Noce scuro
Dark walnut
Noyer foncé



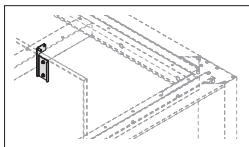
WFN - Frassino nero
Black ash
Frêne noir



Cat. D (Skill) - Gonna rivestita in ecopelle - Eco-leather upholstered modesty panel - Voile de fond revêtue en simili-cuir



Cat. D - Skill

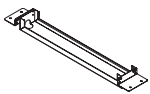


AC - Staffe in acciaio - Steel supports - Équerres en acier

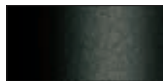


ZGNE - Verniciato goffrato nero
Black embossed painted
Verni gaufré noir
RAL 9005

Vasca cablaggio
Cable tray
Goulotte câblage

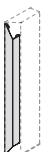


MET - Metallo - Metal - Métal



ZGNE - Verniciato goffrato nero
Black embossed painted
Verni gaufré noir
RAL 9005

Vertebra passacavi
Vertical cable duct
Vertèbre passe-câbles



MET - Metallo - Metal - Métal



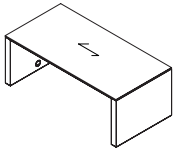
ZGNE - Verniciato goffrato nero
Black embossed painted
Verni gaufré noir
RAL 9005

Ono

Scrivania con gambe pannellate in melaminico

Desk with melamine panelled legs

Bureau avec pieds panneaux en mélamine



M - Melaminico - Melamine - Mélamine



MOB - Olmo chiaro
Light elm
Orme clair



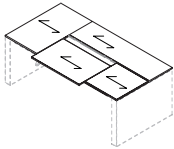
MRO - Rovere
Oak - Chêne



MNC - Noce
Walnut - Noyer



MFN - Frassino nero
Black ash
Frêne noir



M - Formelle in melaminico - Melamine tiles - Sections en mélamine



MOB - Olmo chiaro
Light elm
Orme clair



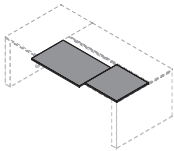
MRO - Rovere
Oak - Chêne



MNC - Noce
Walnut - Noyer



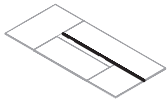
MFN - Frassino nero
Black ash
Frêne noir



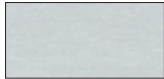
Formelle in mdf rivestite in ecopelle - Eco-leather upholstered mdf tiles - Sections en mdf revêtu en simili-cuir



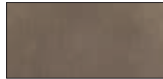
Cat. D - Skill



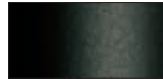
AL - Profilo in alluminio - Aluminium profile - Profil en aluminium



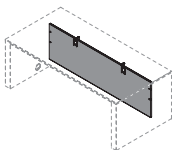
ZAL - Alluminio spazzolato
Brushed aluminium
Aluminium brossé



ZBR - Bronzo spazzolato
Brushed bronze
Bronze brossé



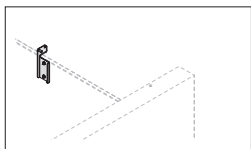
ZGNE - Verniciato goffrato nero
Black embossed painted
Verni gaufré noir
RAL 9005



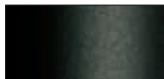
Cat. D (Skill) - Gonna rivestita in ecopelle - Eco-leather upholstered modesty panel - Voile de fond revêtue en simili-cuir



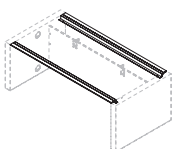
Cat. D - Skill



AC - Staffe in acciaio - Steel supports - Équerres en acier



ZGNE - Verniciato goffrato nero
Black embossed painted
Verni gaufré noir
RAL 9005



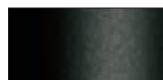
AL - Cornice di finitura in alluminio - Finishing aluminium frame - Cadre de finition en aluminium



ZAL - Alluminio spazzolato
Brushed aluminium
Aluminium brossé



ZBR - Bronzo spazzolato
Brushed bronze
Bronze brossé



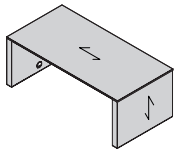
ZGNE - Verniciato goffrato nero
Black embossed painted
Verni gaufré noir
RAL 9005

Ono

Scrivania con gambe pannellate in legno

Desk with veneer panelled legs

Bureau avec pieds panneaux en bois



W - Legno - Veneer - Bois



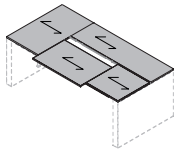
WBI - Frassino bianco
White ash
Frêne blanc



WNS - Noce scuro
Dark walnut
Noyer foncé



WFN - Frassino nero
Black ash
Frêne noir



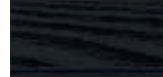
W - Formelle in legno - Veneer tiles - Sections en bois



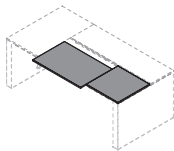
WBI - Frassino bianco
White ash
Frêne blanc



WNS - Noce scuro
Dark walnut
Noyer foncé



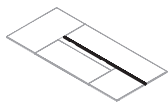
WFN - Frassino nero
Black ash
Frêne noir



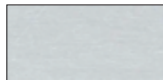
Formelle in mdf rivestite in ecopelle - Eco-leather upholstered mdf tiles - Sections en mdf revêtu en simili-cuir



Cat. D - Skill



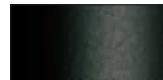
AL - Profilo in alluminio - Aluminium profile - Profil en aluminium



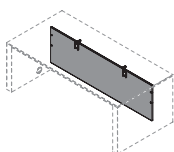
ZAL - Alluminio spazzolato
Brushed aluminium
Aluminium brossé



ZBR - Bronzo spazzolato
Brushed bronze
Bronze brossé



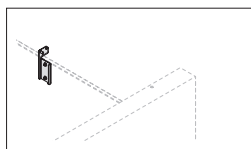
ZGNE - Verniciato goffrato nero
Black embossed painted
Verni gaufré noir
RAL 9005



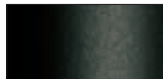
Cat. D (Skill) - Gonna rivestita in ecopelle - Eco-leather upholstered modesty panel - Voile de fond revêtue en simili-cuir



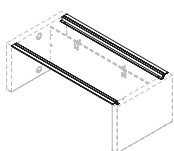
Cat. D - Skill



AC - Staffe in acciaio - Steel supports - Équerres en acier



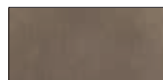
ZGNE - Verniciato goffrato nero
Black embossed painted
Verni gaufré noir
RAL 9005



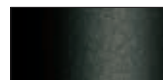
AL - Cornice di finitura in alluminio - Finishing aluminium frame - Cadre de finition en aluminium



ZAL - Alluminio spazzolato
Brushed aluminium
Aluminium brossé



ZBR - Bronzo spazzolato
Brushed bronze
Bronze brossé

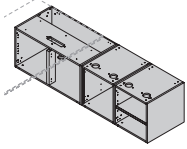


ZGNE - Verniciato goffrato nero
Black embossed painted
Verni gaufré noir
RAL 9005

Ono

Mobile di servizio portante

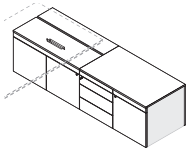
Supporting service unit
Meuble de service portant



M - Scocca interna in melaminico - Melamine internal structure - Structure interne en mélamine



MNV - Nero velluto
Black velvet
Velours noir



M - Top, schiena e frontali in melaminico - Melamine top, back and fronts - Dessus, dos et façades en mélamine



MOB - Olmo chiaro
Light elm
Orme clair



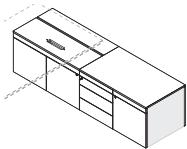
MRO - Rovere
Oak - Chêne



MNC - Noce
Walnut - Noyer



MFN - Frassino nero
Black ash
Frêne noir



W - Top, schiena e frontali in legno - Veneer top, back and fronts - Dessus, dos et façades en bois



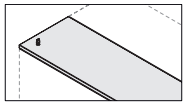
WBI - Frassino bianco
White ash
Frêne blanc



WNS - Noce scuro
Dark walnut
Noyer foncé



WFN - Frassino nero
Black ash
Frêne noir



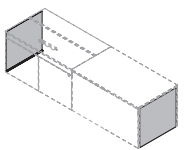
Cat. D (Skill) - Top secretaire rivestito in ecopelle - Eco-leather upholstered top secretaire - Top secretaire revêtu en simili-cuir



Cat. D - Skill

Coppia carter di finitura in alluminio

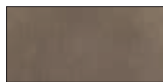
Pair of aluminium finishing covers
Paire de couverture de finition en aluminium



AL - Alluminio - Aluminium - Aluminium



ZAL - Alluminio spazzolato
Brushed aluminium
Aluminium brossé



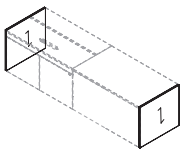
ZBR - Bronzo spazzolato
Brushed bronze
Bronze brossé



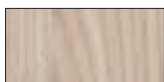
ZGNE - Verniciato goffrato nero
Black embossed painted
Verni gaufré noir
RAL 9005

Coppia di fianchi di finitura

Pair of finishing sides
Paire de côtés de finition



M - Melaminico - Melamine - Mélamine



MOB - Olmo chiaro
Light elm
Orme clair



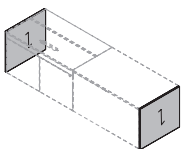
MRO - Rovere
Oak - Chêne



MNC - Noce
Walnut - Noyer



MFN - Frassino nero
Black ash
Frêne noir



W - Legno - Veneer - Bois



WBI - Frassino bianco
White ash
Frêne blanc



WNS - Noce scuro
Dark walnut
Noyer foncé



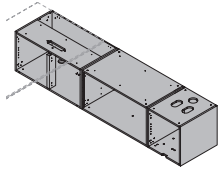
WFN - Frassino nero
Black ash
Frêne noir

Ono

Mobile di servizio portante predisposto per piano regolabile in altezza

Supporting service unit pre-set for height-adjustable top

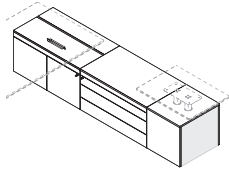
Meuble de service portant avec prédisposition pour plateau réglable en hauteur



M - Scocca interna in melaminico - Melamine internal structure - Structure interne en mélamine



MNV - Nero velluto
Black velvet
Velours noir



M - Top, schiena e frontali in melaminico - Melamine top, back and fronts - Dessus, dos et façades en mélamine



MOB - Olmo chiaro
Light elm
Orme clair



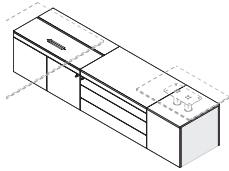
MRO - Rovere
Oak - Chêne



MNC - Noce
Walnut - Noyer



MFN - Frassino nero
Black ash
Frêne noir



W - Top, schiena e frontali in legno - Veneer top, back and fronts - Dessus, dos et façades en bois



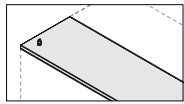
WBI - Frassino bianco
White ash
Frêne blanc



WNS - Noce scuro
Dark walnut
Noyer foncé



WFN - Frassino nero
Black ash
Frêne noir



Cat. D (Skill) - Top secretaire rivestito in ecopelle - Eco-leather upholstered top secretaire - Top secretaire revêtu en simili-cuir

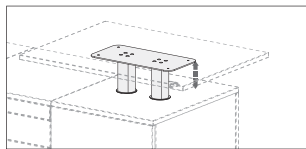


Cat. D - Skill

Colonne regolabili in altezza per mobile di servizio con piano regolabile in altezza

Height-adjustable columns for service unit with height-adjustable top

Colonnes réglables en hauteur pour meuble de service avec plateau réglable en hauteur



MET - Metallo - Metal - Métal



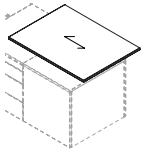
NE - Nero
Black - Noir
RAL 9005

Ono

Piano di servizio per colonne regolabili in altezza

Service top for height-adjustable columns

Plateau de service pour colonnes réglables en hauteur



sp./th. 18 mm

M - Melaminico - Melamine - Mélamine



MOB - Olmo chiaro
Light elm
Orme clair



MRO - Rovere
Oak - Chêne

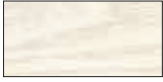


MNC - Noce
Walnut - Noyer



MFN - Frassino nero
Black ash
Frêne noir

W - Legno - Veneer - Bois



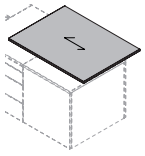
WBI - Frassino bianco
White ash
Frêne blanc



WNS - Noce scuro
Dark walnut
Noyer foncé



WFN - Frassino nero
Black ash
Frêne noir



sp./th. 20 mm

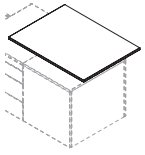
HL - Hpl



HLCB - Calacatta bianco
White Calacatta
Calacatta blanc



HLMZ - Marmo zebra marrone
Brown zebra marble
Marbre marron zébré

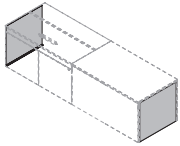


sp./th. 18 mm

Coppia carter di finitura in alluminio

Pair of aluminium finishing covers

Paire de couverture de finition en aluminium



AL - Alluminio - Aluminium - Aluminium



ZAL - Alluminio spazzolato
Brushed aluminium
Aluminium brossé



ZBR - Bronzo spazzolato
Brushed bronze
Bronze brossé

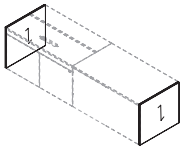


ZGNE - Verniciato goffrato nero
Black embossed painted
Verni gaufré noir
RAL 9005

Coppia di fianchi di finitura

Pair of finishing sides

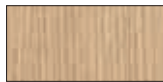
Paire de côtés de finition



M - Melaminico - Melamine - Mélamine



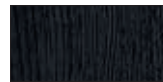
MOB - Olmo chiaro
Light elm
Orme clair



MRO - Rovere
Oak - Chêne

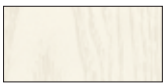


MNC - Noce
Walnut - Noyer

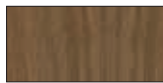


MFN - Frassino nero
Black ash
Frêne noir

W - Legno - Veneer - Bois



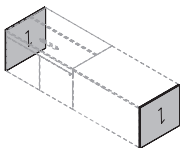
WBI - Frassino bianco
White ash
Frêne blanc



WNS - Noce scuro
Dark walnut
Noyer foncé



WFN - Frassino nero
Black ash
Frêne noir

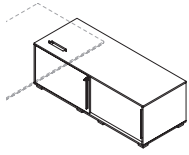


Ono

Mobile di servizio portante

Supporting service unit

Meuble de service portant



M - Melaminico - Melamine - Mèlamine



MOB - Olmo chiaro
Light elm
Orme clair



MRO - Rovere
Oak - Chêne



MNC - Noce
Walnut - Noyer



MFN - Frassino nero
Black ash
Frêne noir

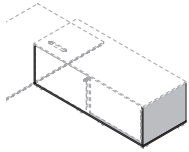


MNV - Nero velluto
Black velvet
Velours noir

Mobile di servizio portante con scocca in melaminico e top e frontali in legno

Supporting service unit with melamine structure and veneer top and fronts

Meuble de service portant avec structure en mélamine et dessus et façades en bois



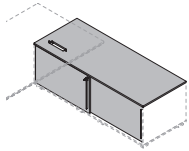
M - Scocca in melaminico - Melamine structure - Structure en mélamine



MBI - Bianco
White - Blanc



MNV - Nero velluto
Black velvet
Velours noir



W - Top e frontali in legno - Veneer top and fronts - Dessus et façades en bois



WBI - Frassino bianco
White ash
Frêne blanc



WNS - Noce scuro
Dark walnut
Noyer foncé

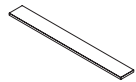


WFN - Frassino nero
Black ash
Frêne noir

Maniglia in metallo (Metal) - Spike/Alplus/Velvet/Asset/Vogue/Pop (B)

Metal handle (Metal) - Spike/Alplus/Velvet/Asset/Vogue/Pop (B)

Poignée en métal (Metal) - Spike/Alplus/Velvet/Asset/Vogue/Pop (B)



MET - Metallo - Metal - Métal



BI - Bianco
White - Blanc
RAL 9010



AO - Alluminio
Aluminium
Aluminium



NE - Nero
Black - Noir
RAL 9005



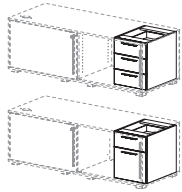
CR - Cromo lucido
Polished chrome
Chrome poli

Ono

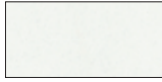
Elementi interni in melaminico per mobile di servizio portante

Melamine internal elements for supporting service unit

Éléments intérieurs en mélamine pour meuble de service portant



M - Melaminico - Melamine - Mélamine



MBI - Bianco
White - Blanc



MOB - Olmo chiaro
Light elm
Orme clair



MRO - Rovere
Oak - Chêne



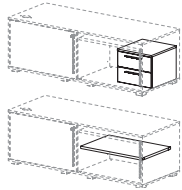
MNC - Noce
Walnut - Noyer



MFN - Frassino nero
Black ash
Frêne noir



MNV - Nero velluto
Black velvet
Velours noir



M - Melaminico - Melamine - Mélamine



MBI - Bianco
White - Blanc



MOB - Olmo chiaro
Light elm
Orme clair



MRO - Rovere
Oak - Chêne



MNC - Noce
Walnut - Noyer



MFN - Frassino nero
Black ash
Frêne noir

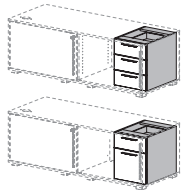


MNV - Nero velluto
Black velvet
Velours noir

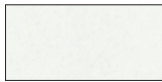
Elementi interni con scocca in melaminico e frontali in legno per mobile di servizio portante

Internal elements with melamine structure and veneer fronts for supporting service unit

Éléments intérieurs avec structure en mélamine et façades en bois pour meuble de service portant



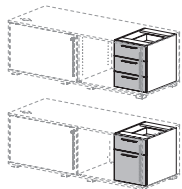
M - Scocca in melaminico - Melamine structure - Structure en mélamine



MBI - Bianco
White - Blanc



MNV - Nero velluto
Black velvet
Velours noir



W - Frontali in legno - Veneer fronts - Façades en bois



WBI - Frassino bianco
White ash - Frêne blanc



WNS - Noce scuro
Dark walnut
Noyer foncé

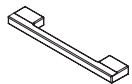


WFN - Frassino nero
Black ash
Frêne noir

Maniglia in metallo (Metal) - Ono (D)

Metal handle (Metal) - Ono (D)

Poignée en métal (Metal) - Ono (D)



MET - Metallo - Metal - Métal



BI - Bianco
White - Blanc
RAL 9010



AO - Alluminio
Aluminium
Aluminium



NE - Nero
Black - Noir
RAL 9005



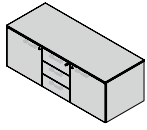
CR - Cromo lucido
Polished chrome
Chrome poli

Ono

Mobile di servizio in melaminico

Melamine service unit

Meuble de service en mélamine



M - Melaminico - Melamine - Mélamine



MOB - Olmo chiaro
Light elm
Orme clair



MRO - Rovere
Oak - Chêne



MNC - Noce
Walnut - Noyer



MFN - Frassino nero
Black ash
Frêne noir

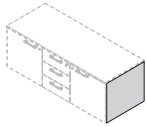


MNV - Nero velluto
Black velvet
Velours noir

Mobile di servizio con scocca in melaminico

Service unit with melamine structure and veneer top and fronts

Meubles de service avec structure en mélamine et dessus et façades en bois



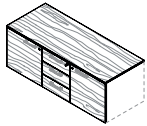
M - Scocca in melaminico - Melamine structure - Structure en mélamine



MBI - Bianco
White - Blanc



MNV - Nero velluto
Black velvet
Velours noir



W - Top e frontali in legno - Veneer top and fronts - Dessus et façades en bois



WBI - Frassino bianco
White ash
Frêne blanc



WNS - Noce scuro
Dark walnut
Noyer foncé

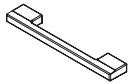


WFN - Frassino nero
Black ash
Frêne noir

Maniglia in metallo (Metal) - Ono (D)

Metal handle (Metal) - Ono (D)

Poignée en métal (Metal) - Ono (D)



MET - Metallo - Metal - Métal



BI - Bianco
White - Blanc
RAL 9010



AO - Alluminio
Aluminium
Aluminium



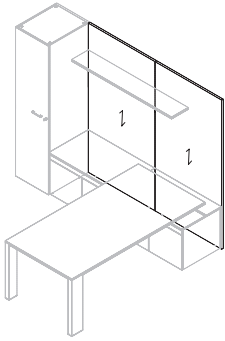
NE - Nero
Black - Noir
RAL 9005



CR - Cromo lucido
Polished chrome
Chrome poli

Ono

Composizione Composition Composition



M - Pannelli verticali in melaminico - Vertical melamine panels - Panneaux verticaux en mélamine



MBI - Bianco
White - Blanc



MTR - Tortora
Dove - Gris taupe



MCE - Cemento
Concrete - Béton
TEXTURE MATERICA
TEXTURED EFFECT



MOB - Olmo chiaro
Light elm
Orme clair



MRO - Rovere
Oak - Chêne



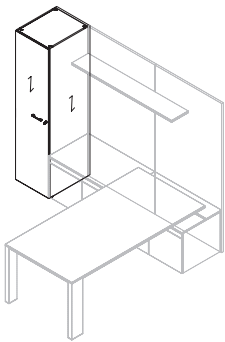
MNC - Noce
Walnut - Noyer



MFN - Frassino nero
Black ash
Frêne noir



MNV - Nero velluto
Black velvet
Velours noir



M - Armadio in melaminico - Melamine cabinet - Armoire en mélamine



MOB - Olmo chiaro
Light elm
Orme clair



MRO - Rovere
Oak - Chêne



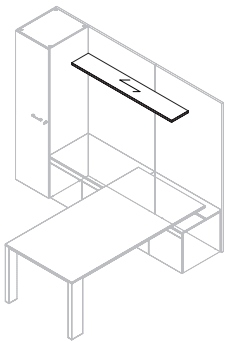
MNC - Noce
Walnut - Noyer



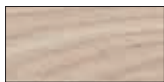
MFN - Frassino nero
Black ash
Frêne noir



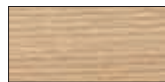
MNV - Nero velluto
Black velvet
Velours noir



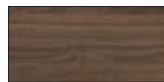
M - Mensola in melaminico - Melamine shelf - Étagère en mélamine



MOB - Olmo chiaro
Light elm
Orme clair



MRO - Rovere
Oak - Chêne



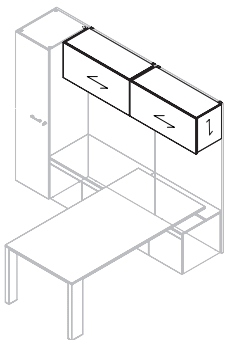
MNC - Noce
Walnut - Noyer



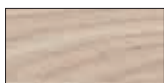
MFN - Frassino nero
Black ash
Frêne noir



MNV - Nero velluto
Black velvet
Velours noir



M - Pensili in melaminico - Melamine hanging units - Meubles suspendus en mélamine



MOB - Olmo chiaro
Light elm
Orme clair



MRO - Rovere
Oak - Chêne



MNC - Noce
Walnut - Noyer



MFN - Frassino nero
Black ash
Frêne noir

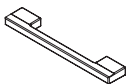


MNV - Nero velluto
Black velvet
Velours noir

Maniglia in metallo (Metal) - Ono (D)

Metal handle (Metal) - Ono (D)

Poignée en métal (Metal) - Ono (D)



MET - Metallo - Metal - Métal



BI - Bianco
White - Blanc
RAL 9010



AO - Alluminio
Aluminium
Aluminium



NE - Nero
Black - Noir
RAL 9005



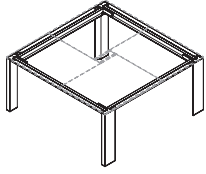
CR - Cromo lucido
Polished chrome
Chrome poli

Ono

Tavolo riunione con gambe in alluminio e piano a formelle

Meeting table with aluminium legs and top divided in tiles

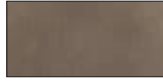
Table réunion avec piètement en aluminium et plateau à sections



AL - Alluminio - Aluminium - Aluminium



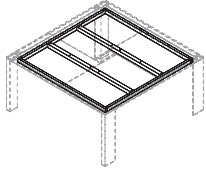
ZAL - Alluminio spazzolato
Brushed aluminium
Aluminium brossé



ZBR - Bronzo spazzolato
Brushed bronze
Bronze brossé



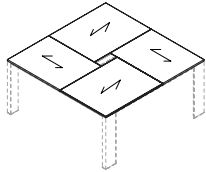
ZGNE - Verniciato goffrato nero
Black embossed painted
Verni goffré noir
RAL 9005



MET - Telaio in metallo - Metal frame - Châssis en métal



ZGNE - Verniciato goffrato nero
Black embossed painted
Verni goffré noir
RAL 9005



M - Formelle in melaminico - Melamine tiles - Sections en mélamine



MOB - Olmo chiaro
Light elm
Orme clair



MRO - Rovere
Oak - Chêne

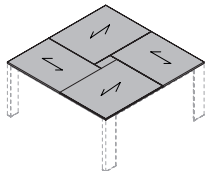


MNC - Noce
Walnut - Noyer



MFN - Frassino nero
Black ash
Frêne noir

sp./th. 18 mm



W - Formelle in legno - Veneer tiles - Sections en bois



WBI - Frassino bianco
White ash
Frêne blanc

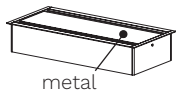


WNS - Noce scuro
Dark walnut
Noyer foncé



WFN - Frassino nero
Black ash
Frêne noir

sp./th. 20 mm



metal

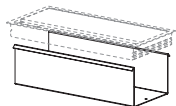
AL - Flap in alluminio - Aluminium top access - Top access en aluminium



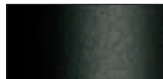
AO - Alluminio
Aluminium
Aluminium



NE - Nero
Black - Noir
RAL 9005



MET - Vasca di cablaggio in metallo - Metal cable tray - Goulotte câblage en métal



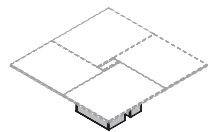
ZGNE - Verniciato goffrato nero
Black embossed painted
Verni goffré noir
RAL 9005

Ono

Tavolo riunione in melaminico con struttura pannellata e piano a formelle

Melamine meeting table with panelled structure et top dividing in tiles

Table réunion en mélamine avec structure à panneaux et plateau à sections



M - Struttura pannellata in melaminico - Melamine panelled structure - Structure à panneaux en mélamine



MOB - Olmo chiaro
Light elm
Orme clair



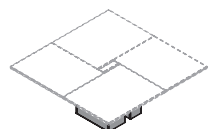
MRO - Rovere
Oak - Chêne



MNC - Noce
Walnut - Noyer



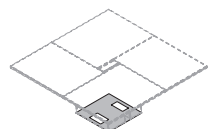
MFN - Frassino nero
Black ash
Frêne noir



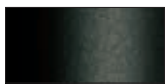
Cat. D (Skill) - Struttura pannellata rivestita in ecopelle - Eco-leather upholstered panelled structure - Structure à panneaux revêtu en simili-cuir



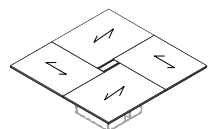
Cat. D - Skill



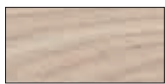
MET - Base in metallo - Metal base - Base en métal



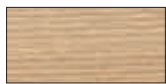
ZGNE - Verniciato goffrato nero
Black embossed painted
Verni gaufré noir
RAL 9005



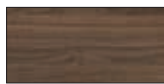
M - Formelle e flap in melaminico - Melamine tiles and top access - Sections et top access en mélamine



MOB - Olmo chiaro
Light elm
Orme clair



MRO - Rovere
Oak - Chêne

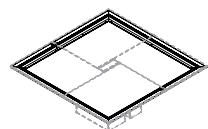


MNC - Noce
Walnut - Noyer



MFN - Frassino nero
Black ash
Frêne noir

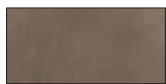
sp./th. 18 mm



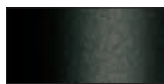
AL - Cornice di finitura in alluminio - Finishing aluminium frame - Cadre de finition en aluminium



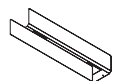
ZAL - Alluminio spazzolato
Brushed aluminium
Aluminium brossé



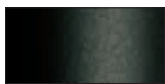
ZBR - Bronzo spazzolato
Brushed bronze
Bronze brossé



ZGNE - Verniciato goffrato nero
Black embossed painted
Verni gaufré noir
RAL 9005



MET - Vasca di cablaggio in metallo - Metal cable tray - Goulotte câblage en métal



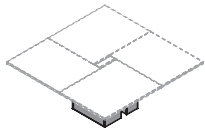
ZGNE - Verniciato goffrato nero
Black embossed painted
Verni gaufré noir
RAL 9005

Ono

Tavolo riunione in legno con struttura pannellata e piano a formelle

Veneer meeting table with panelled structure and top dividing in tiles

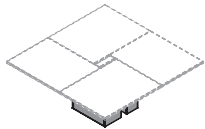
Table réunion en bois avec structure à panneaux et plateau à sections



M - Struttura pannellata in melaminico - Melamine panelled structure - Structure à panneaux en mélamine



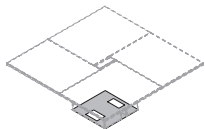
MNV - Nero velluto
Black velvet
Velours noir



Cat. D (Skill) - Struttura pannellata rivestita in ecopelle - Eco-leather upholstered panelled structure - Structure à panneaux revêtu en simili-cuir



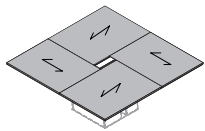
Cat. D - Skill



MET - Base in metallo - Metal base - Base en métal

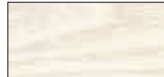


ZGNE - Verniciato goffrato nero
Black embossed painted
Verni gaufré noir
RAL 9005



sp./th. 20 mm

W - Formelle e flap in legno - Veneer tiles and top access - Sections et top access en bois



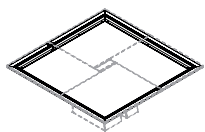
WBI - Frassino bianco
White ash
Frêne blanc



WNS - Noce scuro
Dark walnut
Noyer foncé



WFN - Frassino nero
Black ash
Frêne noir



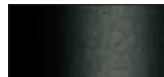
AL - Cornice di finitura in alluminio - Finishing aluminium frame - Cadre de finition en aluminium



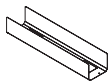
ZAL - Alluminio spazzolato
Brushed aluminium
Aluminium brossé



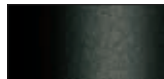
ZBR - Bronzo spazzolato
Brushed bronze
Bronze brossé



ZGNE - Verniciato goffrato nero
Black embossed painted
Verni gaufré noir
RAL 9005



MET - Vasca di cablaggio in metallo - Metal cable tray - Goulotte câblage en métal



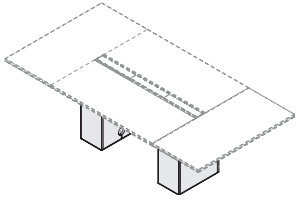
ZGNE - Verniciato goffrato nero
Black embossed painted
Verni gaufré noir
RAL 9005

Ono

Tavolo riunione con gambe pannellate e piano in melaminico

Meeting table with panelled legs and melamine top

Table réunion avec pieds panneaux et plateau en mélamine



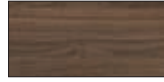
M - Gambe pannellate in melaminico - Melamine panelled legs - Pieds panneaux en mélamine



MOB - Olmo chiaro
Light elm
Orme clair



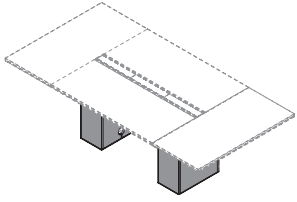
MRO - Rovere
Oak - Chêne



MNC - Noce
Walnut - Noyer



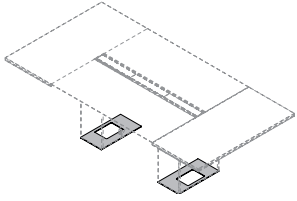
MFN - Frassino nero
Black ash
Frêne noir



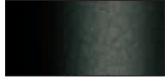
Cat. D (Skill) - Gambe pannellate rivestite in ecopelle - Eco-leather upholstered panelled legs - Pieds panneaux revêtus en simili-cuir



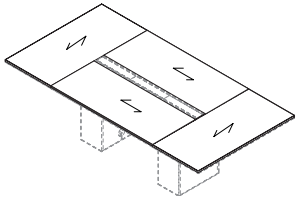
Cat. D - Skill



MET - Base in metallo - Metal base - Base en métal



ZGNE - Verniciato goffrato nero
Black embossed painted
Verni gaufré noir
RAL 9005



M - Piano e flap in melaminico - Melamine top and top access - Plateau et top access en mélamine



MOB - Olmo chiaro
Light elm
Orme clair



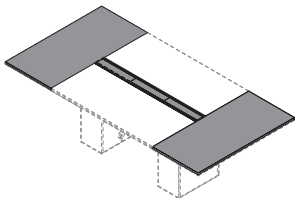
MRO - Rovere
Oak - Chêne



MNC - Noce
Walnut - Noyer



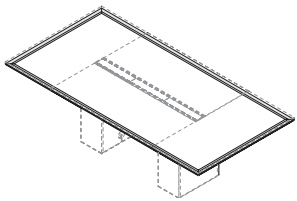
MFN - Frassino nero
Black ash
Frêne noir



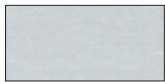
Piani terminali e flap rivestiti in ecopelle - Eco-leather covered end tops and top access - Plateaux d'extrémité et top access revêtus en simili-cuir



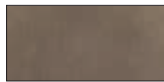
Cat. D - Skill



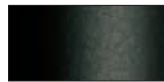
AL - Cornice di finitura in alluminio - Finishing aluminium frame - Cadre de finition en aluminium



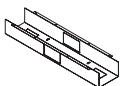
ZAL - Alluminio spazzolato
Brushed aluminium
Aluminium brossé



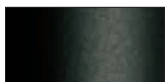
ZBR - Bronzo spazzolato
Brushed bronze
Bronze brossé



ZGNE - Verniciato goffrato nero
Black embossed painted
Verni gaufré noir
RAL 9005



MET - Vasca di cablaggio in metallo - Metal cable tray - Goulotte câblage en métal



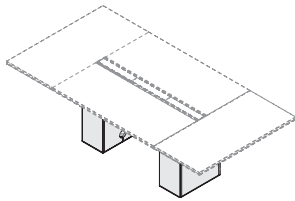
ZGNE - Verniciato goffrato nero
Black embossed painted
Verni gaufré noir
RAL 9005

Ono

Tavolo riunione con gambe pannellate e piano in legno

Meeting table with panelled legs and veneer top

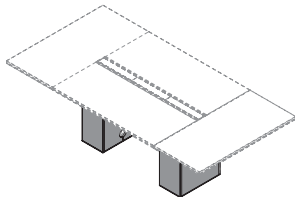
Table réunion avec pieds panneaux et plateau en bois



M - Gambe pannellate in melaminico - Melamine panelled legs - Pieds panneaux en mélamine



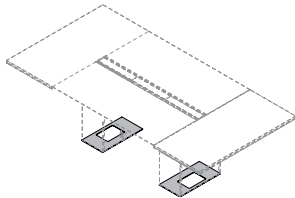
MNV - Nero velluto
Black velvet
Velours noir



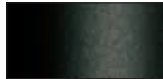
Cat. D (Skill) - Gambe pannellate rivestite in ecopelle - Eco-leather upholstered panelled legs - Pieds panneaux revêtus en simili-cuir



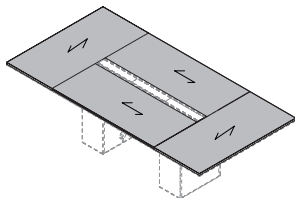
Cat. D - Skill



MET - Base in metallo - Metal base - Base en métal



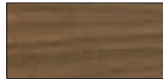
ZGNE - Verniciato goffrato nero
Black embossed painted
Verni gaufré noir
RAL 9005



W - Piano e flap in legno - Veneer top and top access - Plateau et top access en bois



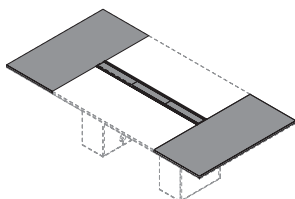
WBI - Frassino bianco
White ash
Frêne blanc



WNS - Noce scuro
Dark walnut
Noyer foncé



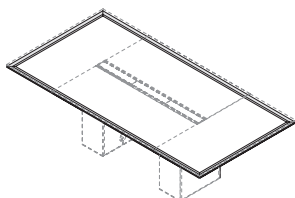
WFN - Frassino nero
Black ash
Frêne noir



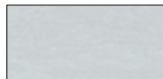
Piani terminali e flap rivestiti in ecopelle - Eco-leather covered end tops and top access - Plateaux d'extrémité et top access revêtus en simili-cuir



Cat. D - Skill



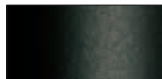
AL - Cornice di finitura in alluminio - Finishing aluminium frame - Cadre de finition en aluminium



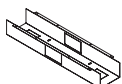
ZAL - Alluminio spazzolato
Brushed aluminium
Aluminium brossé



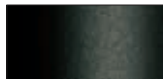
ZBR - Bronzo spazzolato
Brushed bronze
Bronze brossé



ZGNE - Verniciato goffrato nero
Black embossed painted
Verni gaufré noir
RAL 9005



MET - Vasca di cablaggio in metallo - Metal cable tray - Goulotte câblage en métal



ZGNE - Verniciato goffrato nero
Black embossed painted
Verni gaufré noir
RAL 9005

