

Scheda Tecnico Illustrativa Poltroncina Lounge

Serie "Miss Lounge"

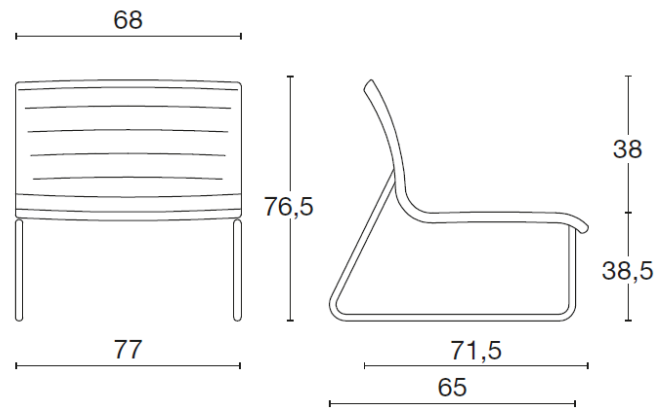


Immagine identificativa del prodotto

DESCRIZIONI TECNICHE:

Scocca: Multistrato di faggio spessore 10mm - imbottitura in Poliuretano espanso ignifugo T40/PCM, densità 40 Kg/m³ (metodo di prova C.S.E. RF 4/83 (UNI9175) classe 1IM.

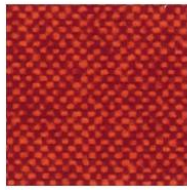
Basamento Telaio Slitta bianca, nera o cromata.



Rivestimento in TESSUTO IGNIFUGO CAT. F "JET"



4051



9402



4018



9110



9305



7025



9703



7034



3019



9610



6007



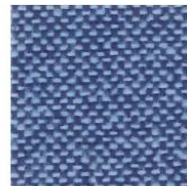
6091



2024



6056



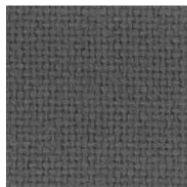
9601



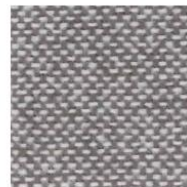
6013



9108



8009



9804



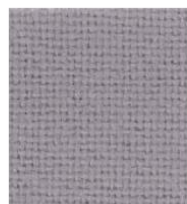
8033



9281



8017



8078

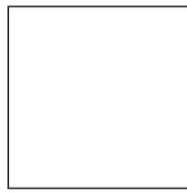


6095

Rivestimento in TESSUTO IGNIFUGO CAT. F "PLANET-SURROUND"



125



101



136



110



121



126



118



120



109



116



135



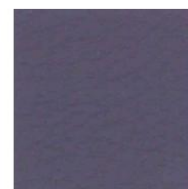
129



114



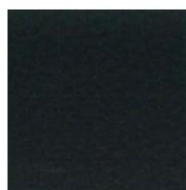
103



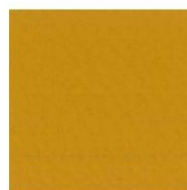
123



106



133



104



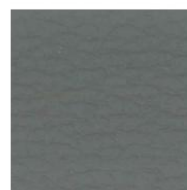
122



132



131



117



119



111