

**NOME:**

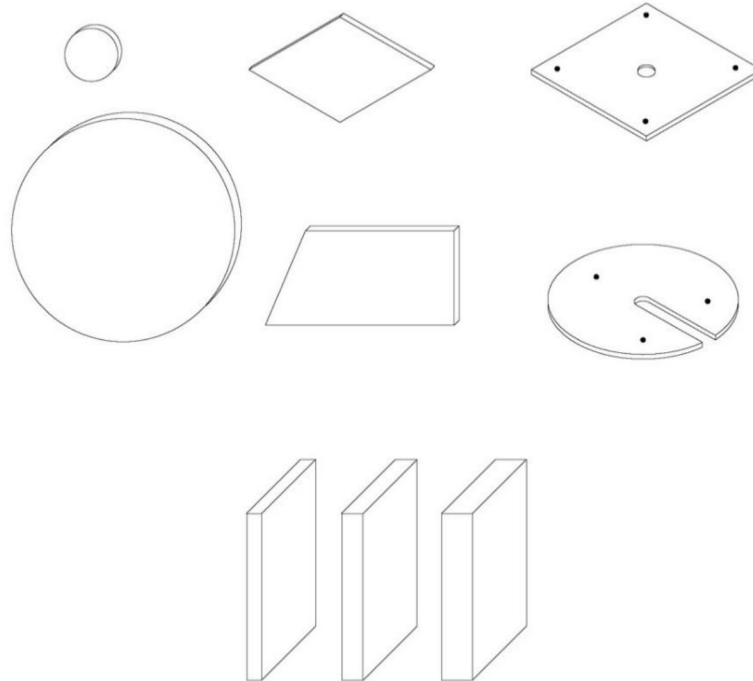
T-FRAME TAILOR MADE

**DESCRIZIONE:**

Pannello/sistema fonoassorbente, lavorazione sartoriale, modello TAILOR MADE, composto da struttura multistrato irrigidita e stratigrafia di fibra fonoassorbente in poliestere spessore 3/5 cm

**APPLICAZIONI:**

- Muro con velcro o calamite
- Scrivania
- Soffitto con velcro o calamite
- Soffitto pendinato
- Baffle con calamite o cavetti
- Autoportante, totem



## DIMENSIONI:

- Circle: Ø 60 | 80 | 100 | 120 x SP 3 | 5 cm
- Ellipse: L/H 120 | 160 | 180 | 200 x L/H 80 | 100 | 120 x SP 3 | 5 cm
- Hexagon: L/H 69,25 | 138,5 x L/H 60 | 120 x SP 3 | 5 cm
- Pentagon: L/H 63 | 126,2 x L/H 60 | 120 x SP 3 | 5 cm
- Rectangle: L/H 120 | 160 | 180 | 200 x L/H 60 | 80 | 100 | 120 x SP 3 | 5 cm
- Rectangle (Scrivania): L 60 | 80 | 100 | 120 | 140 | 160 | 180 x H 40 | 55 x SP 3 | 5 cm
- Rectangle (Baffle): L 80 | 100 | 120 | 140 | 160 | 180 | 200 x H 40 | 60 x SP 3 | 5 cm
- Square: L/H 60 | 80 | 120 x L/H 60 | 80 | 120 x SP 3 | 5 cm
- Triangle: L/H 60 | 120 x L/H 51,95 | 103,9 x SP 3 | 5 cm

NOTE: Pannelli customizzabili, disponibili ulteriori forme e misure su richiesta

## PESO:

- 2 kg/m<sup>2</sup> - SP 3 cm
- 2,5 kg/m<sup>2</sup> - SP 5 cm

NOTE: Disponibili ulteriori spessori su richiesta

## COMPOSIZIONE:

- Anima: materiale fonoassorbente composto da materiale riciclato 100%, fibre in poliestere

Reazione al fuoco: B-s2, d0

Classe fumo: F1

Certificato: Oekotex

- Finiture CAT **A**:

- **Trevira CS** - 100% Trevira CS FR, poliestere Fr

Reazione al fuoco: **Class 1**

Certificato: **Oekotex**

- **PETfabric** - 100% poliestere FR riciclato + GRS

Reazione al fuoco: **Class 1**

Certificato: **Oekotex**

- **PETcolor** - 100% PET, poliestere FR riciclato + GRS

Reazione al fuoco: **Class 1**

- **ECOfelt** - 90% lana naturale, 10% poliestere

- **PETfelt** - 96% PET - Bottiglie di plastica postconsumo

- **Velvet** - 100% poliestere

- Finiture CAT **B**:

- **Tweed** - 75% lana, 25% poliammide

Reazione al fuoco: **Class 1**

- **Trace** - 100% Trevira CS FR, poliestere Fr

Reazione al fuoco: **Class 1**

Certificato: **Oekotex**

## RICICLABILITÀ:

Pannello di materiale riciclato e riciclabile alla fine della sua vita, senza dover separare anima e finitura

## MANUTENZIONE:

Pannello pulibile con detergenti specifici

**CERTIFICAZIONI:**

• **CLASSE REAZIONE AL FUOCO:**

B-s2, d0



• **MARCATURA CE:**

B-s1, d0



• **CERTIFICAZIONI ECOLOGICHE:**

GREENGUARD  
GREENGUARDGOLD



VOC EMISSION TEST Indoor Air Comfort GOLD



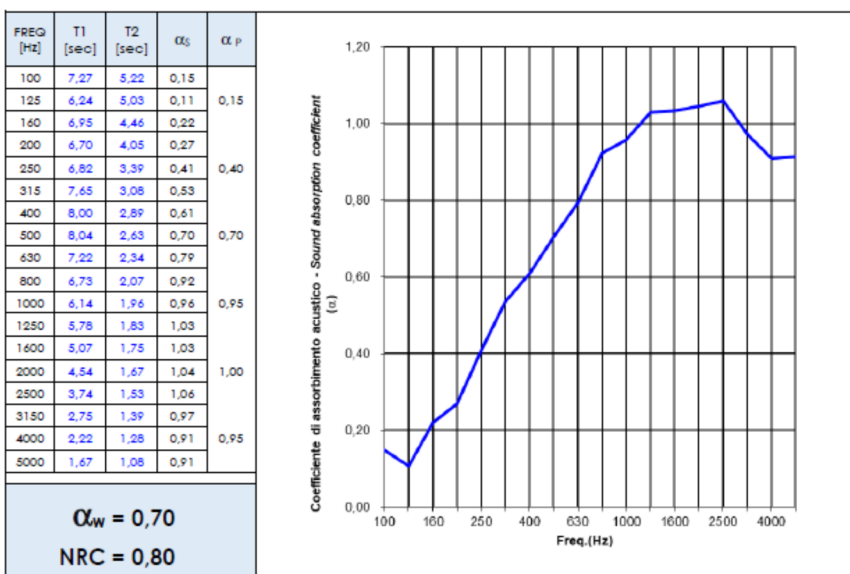
• **REPORT DI FONASSORBIMENTO:**

UNI EN ISO 354: 2003  
UNI EN ISO 11654: 1998



**T-FRAME (SP 3 cm):**

Elemento in prova Tested element	TAILOR MADE - 3cm
Descrizione del campione Sample description	Vedere § "Descrizione del campione in prova" del presente Report Montaggio tipo A secondo EN 354 See § "Tested sample description" of this Report Type A mounting according to EN 354
Superficie del campione Sample surface	11,2 m <sup>2</sup>

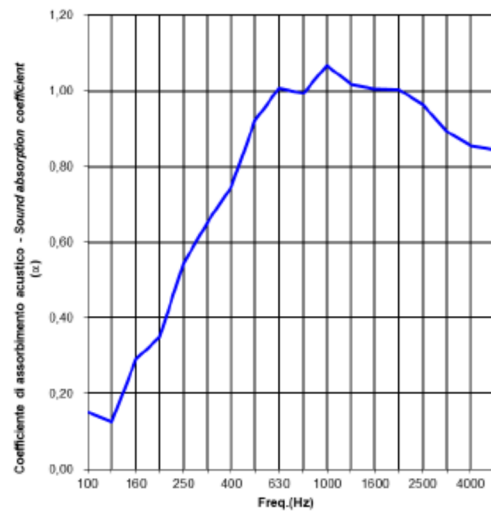


## T-FRAME (SP 4 cm):

FREQ [Hz]	T1 [sec]	T2 [sec]	$\alpha_s$	$\alpha_p$
100	7,27	5,24	0,15	0,20
125	6,24	4,89	0,12	
160	6,95	4,04	0,29	
200	6,70	3,65	0,35	0,50
250	6,82	2,94	0,55	
315	7,65	2,76	0,65	
400	8,00	2,56	0,75	0,90
500	8,04	2,21	0,92	
630	7,22	2,01	1,01	
800	6,73	1,99	0,99	1,00
1000	6,14	1,84	1,07	
1250	5,78	1,87	1,02	
1600	5,07	1,80	1,01	1,00
2000	4,54	1,73	1,00	
2500	3,74	1,64	0,96	
3150	2,75	1,47	0,89	0,85
4000	2,22	1,32	0,86	
5000	1,67	1,11	0,85	

$$\alpha_w = 0,80$$

$$NRC = 0,85$$



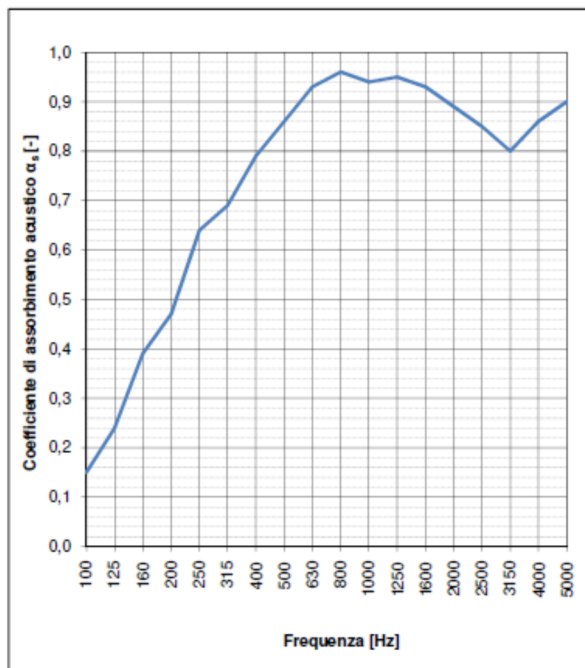
## T-FRAME (SP 5 cm):

Descrizione dell'elemento di prova: "Pannelli Tailor made" spessore totale 50 mm  $\pm$  20%.  
 Tipologia di Montaggio: Montaggio Tipo A

Area dell'elemento di prova:  
 Volume della camera riverberante:

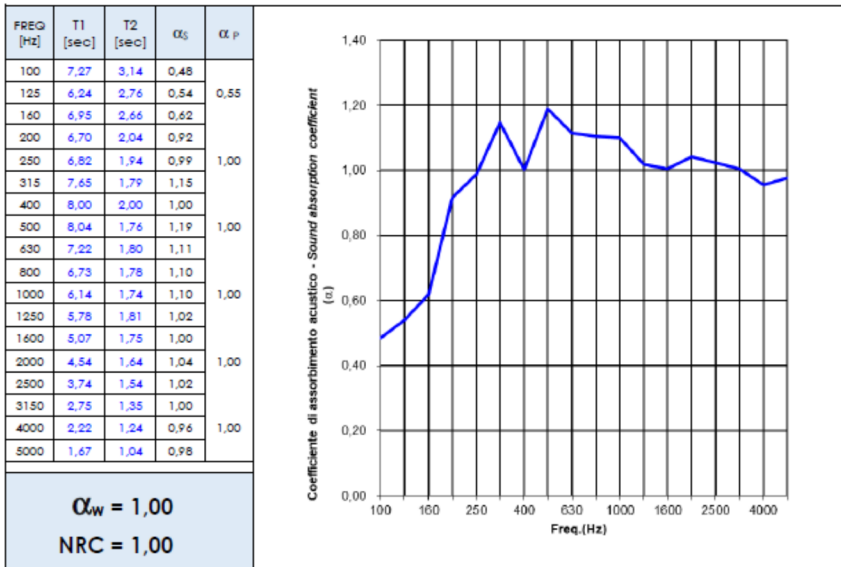
11,95 m<sup>2</sup>  
 161,3 m<sup>3</sup>

f [Hz]	$\alpha_s$ [-]
100	0,15
125	0,24
160	0,39
200	0,47
250	0,64
315	0,69
400	0,79
500	0,86
630	0,93
800	0,96
1000	0,94
1250	0,95
1600	0,93
2000	0,89
2500	0,85
3150	0,80
4000	0,86
5000	0,90



## T-FRAME (SP 10 cm):

Elemento in prova Tested element	TAILOR MADE – 10cm
Descrizione del campione Sample description	Vedere § "Descrizione del campione in prova" del presente Report Montaggio tipo A secondo EN 354 Ssee § "Tested sample description" of this Report Type A mounting according to EN 354
Superficie del campione Sample surface	11,5 m <sup>2</sup>

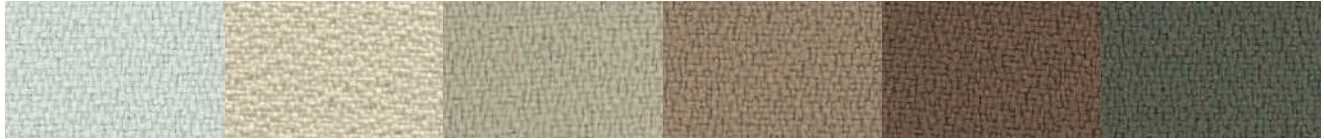


**THICKNESS**  
gr / mtl 460 ± 10%

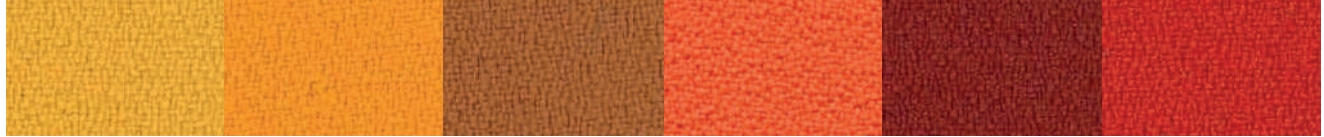
**WIDTH**  
cm 140 ± 2% | " 55 ± 2%



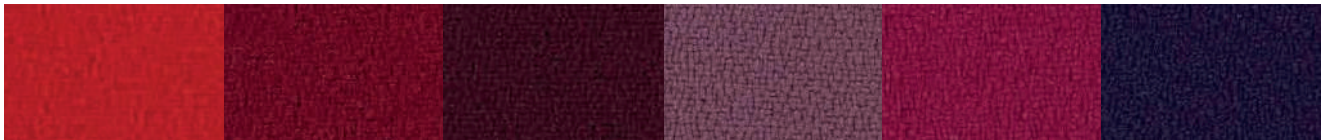
# Trevira CS.



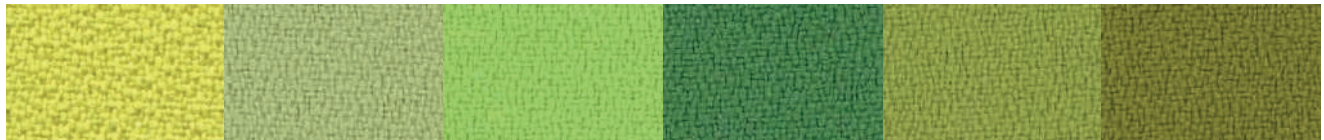
Light grey 611T    Moka 516    Beige 532    Camel 533    Tuscan brown 534    Brown sugar 569



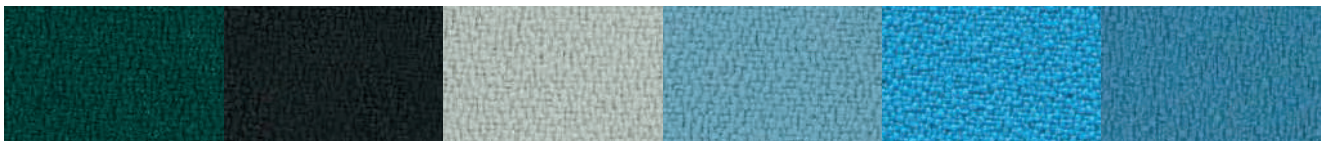
Yellow 53    Carrot 66    Tiger eye 119    Summer 133    Brick 572    Orange 120



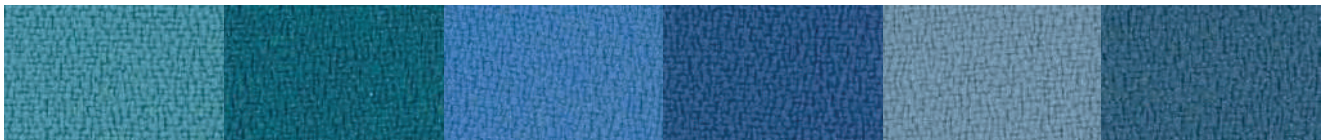
Red 231    Bordeaux 236    Red wine 234    Lavender 175    Fuchsia 173    Purple 262



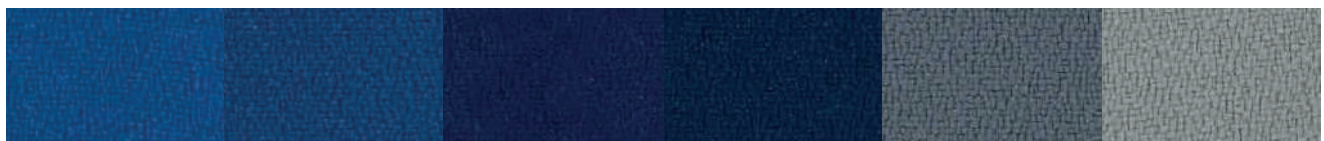
Lime 462    Green tea 425    Apple Green 463    Office green 443    Grass 464    Olive 426



Forest green 496    Dark mud 571    Pearl grey 643    Light blue 386    Azuleja 367    Capri 379



Turquoise 366    Peacock blue 411    Pastel blue 380    Steel blue 263    Iceberg 377    Queen blue 378



Sapphire 331    Office blue 332T    Dark blue 334T    Midnight blue 333T    Quartz grey 636    Grey 629



Old silver 625    Taupe 607    White 999    Black 651



**THICKNESS**  
gr / mtl 470 ± 10%

**WIDTH**  
cm 140 ± 2% | " 55 ± 2%



# PETfabric.



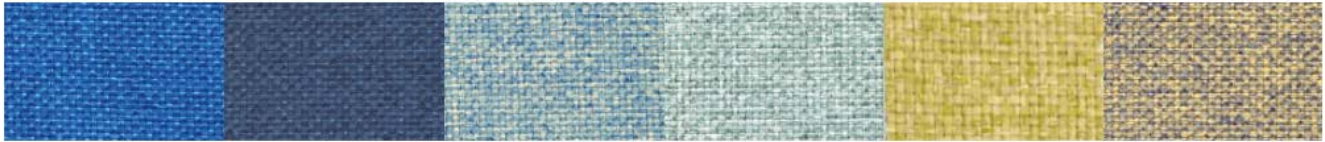
Jacket 4559    Warm grey 4560    Dark red 4210    Brown 4558    Sand 4513    Cream 4515



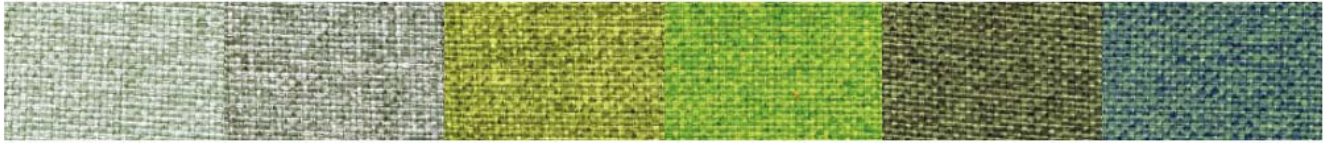
Bronze 4109    Orangina 4105    Sunset 4107    Brick 4211    Poppy 4214    Light blue 4361



Spring Morning 4153    Lilac 4253    Dark Magenta 4154    Antique Rose 4155    Ice 4365    Sky 4360



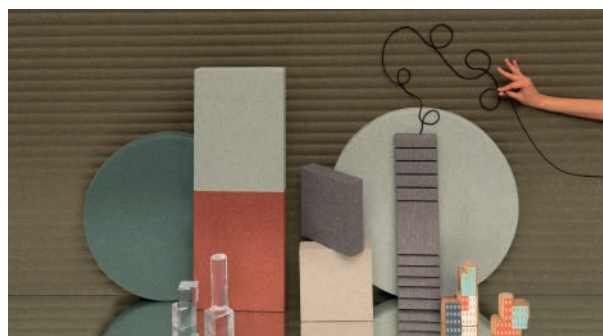
Villa 4310    Blue 4313    Azure 4311    Morning green 4467    Gold 4057    Camo 4312



Sage 4466    Mesh green 4468    Bright green 4464    Brilliant green 4460    Underbrush 4462    Tropical 4461



Neutral grey 4511    Light grey 4613    Ash 4614    Suit grey 4615    Road 4616

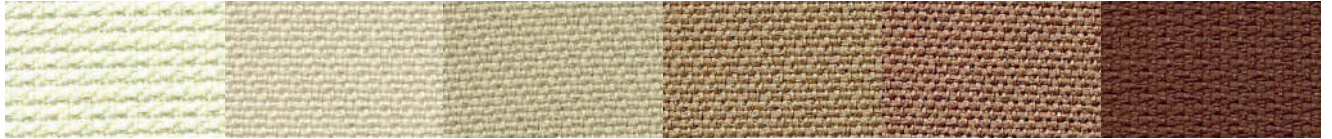


**THICKNESS**  
gr / mtl 470 ± 10%

**WIDTH**  
cm 140 ± 2% | " 55 ± 2%



# PETcolor.



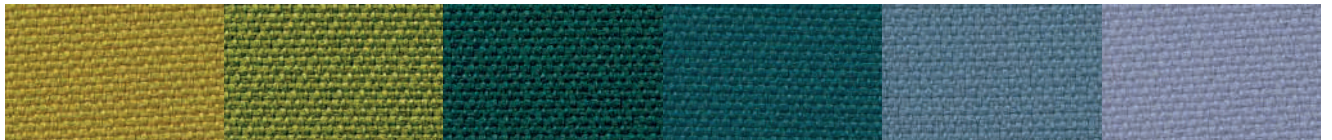
White 2999    Milk 2509    Beige 2503    Camel 2504    Deer 2510    Sierra 2557



Yellow 2051    Orange 2104    Papaya 2103    Red 2201    Mud 2552    Dark chocolate 2556



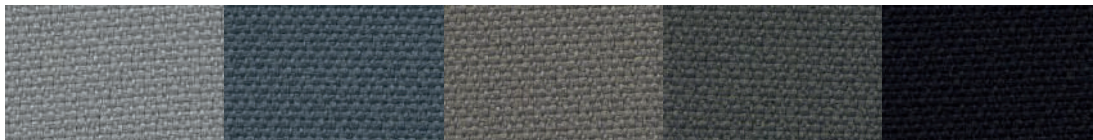
Brick 2555    Palazzo red 2206    Ossalide 2151    Bordeaux 2203    Malva 2251    Blueberry 2252



Pistachio 2451    Green leaf 2452    Forest 2459    Peacock 2402    Sugar 2357    Pouder 2358



Ice 2612    Light blue 2351    Greece 2308    Van Gogh 2301    Midnight 2309    Blue romance 2303



Grey 2602    Infinity 2307    Rock Grey 2603    City grey 2604    Black 2651



**THICKNESS**  
mm 1,5 | gr/mtl 420

**WIDTH**  
cm 150 ± 5% | " 59 ± 5%



# ECOfelt.



Ghost white 955E   Chalk 327   Grey 953E   Concrete 903   Ink 329   Dark grey 923



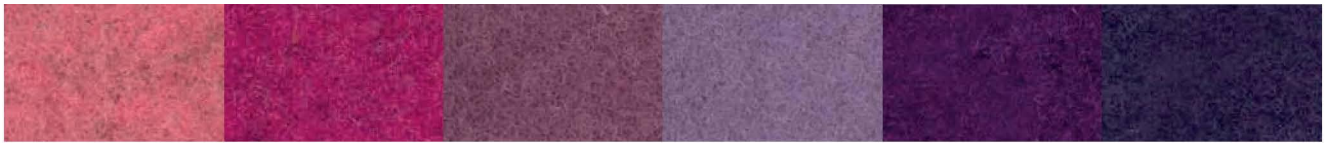
Beige 952   Caramel 332E   Mushroom 325   Chocolate 352   Taupe 511   Brown 605



Yellow 34   Egg 980   Mustard 54   Cob orange 997   Orange 971   Salmon 317



Red 5   Rust 604   Pompei 47   Bordeaux 192   Marsala 973   Quartz rose 940



Bubble pink 53   Pink 988   Mauve 601   Agate 919   Violet 921   Purple 508



Barolo 602   Grape 603   Acid green 611E   Cashmere green 89   Grassland 937   Tea Green 345



Leaf Green 910   Black forest 77   Dark musk 22E   Fresh air 976   Salvia green 334E   Mineral Blue 311



Lagoon 608   Peacock blue 962   Biggest Splash 41   Capri 341   Avio 333E   Moonstone 512



Azuleja 318   Light blue 914   Blue yonder 200   Honolulu blue 607   Blue 193   Deep sea blue 963



Nynph 972

**THICKNESS**  
mm 1,5 | gr/mtl 420

**WIDTH**  
cm 150 ± 5% | ” 59 ± 5%



# PETfelt.



Ash 703      Fog 953P      Milk 955P      Beige 16      Tuscan brown 20      Mud 19



Pale yellow 41      Alabaster 32      Yellow 3      Duck Orange 43      Orange 9      Dark Orange 14



Red 6      Ruby red 27      Bordeaux 15      Pastel pink 37      Pink 17      Wisteria pink 36



Barbie 113      Fuchsia 10      Sangria 30      Grapes 23      Purple 11      Raspberry 47



Opal 33      Celadon 39      Water green 2      Kiwy 28      Acid green 7      La salle green 12



Jungle green 31      Grey green 22      Egg blue 38      Light blue 8      Blue 13      Azure 1



Summer night 21      Charm blue 44      Pacific blue 29      Dark blue 5      Midnight 905      Rhino 903



Grey 4      Street 529      Rich black 18



**THICKNESS**  
gr / mtl 420

**WIDTH**  
cm 145 ± 2% | " 57



# Velvet.



Beige 104

Mauve 23V

Marsala 80



Yellow 26

Cherry 10V

Bordeaux 90



Taupe 205

Graphite 617

Brown 100



Bright green 12V

Salvia green 56

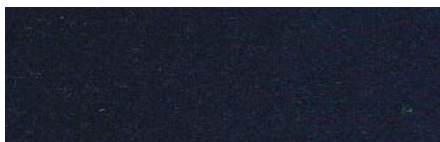
Lagoon 15V



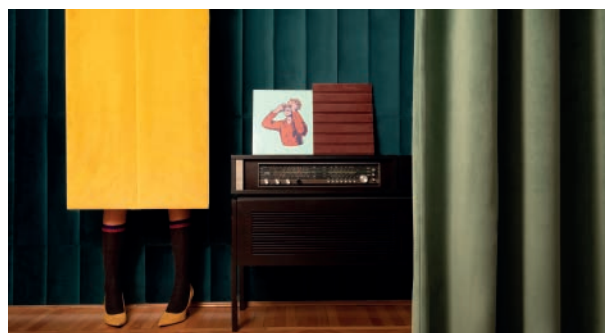
Grey 616

Avio 16V

Deep sea blue 14V



Dark blue 666

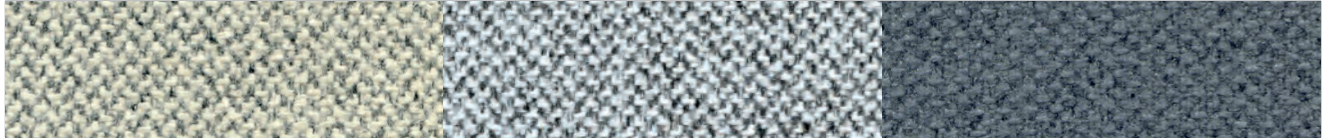


**THICKNESS**  
gr / mtl 490 ± 10%

**WIDTH**  
cm 140 ± 2% | ” 55 ± 2%



# Trace.



Warm grey 9607

Cold grey 9610

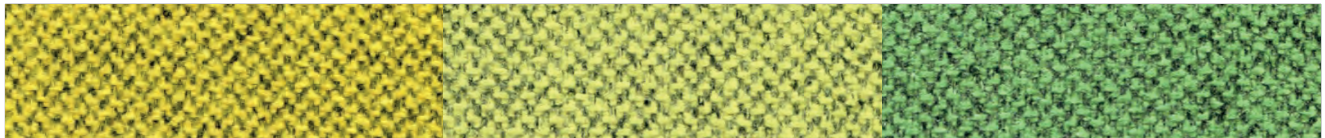
Formal grey 9608



Sea 9402

Blue 9302

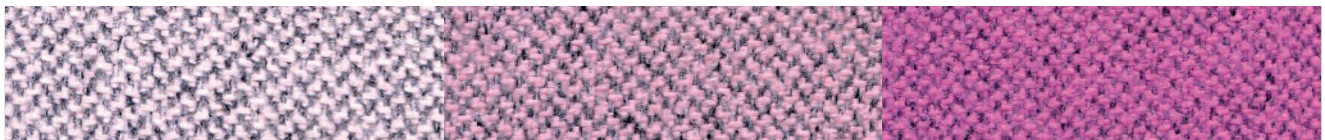
Ocean 9403



Yellow 9052

Pistachio 9452

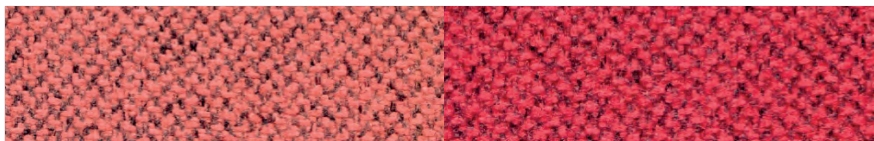
Green leaf 9455



Cloud pink 9155

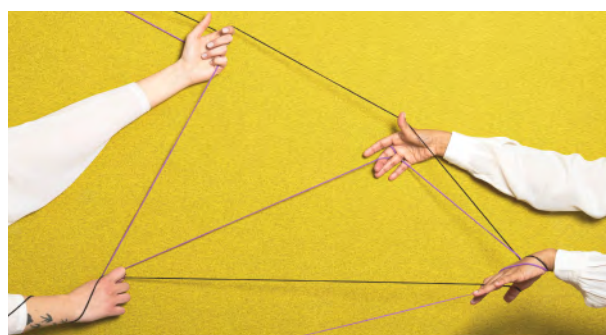
Pink 9154

Blossom 9156



Salmon 9157

Strawberry 9203



**THICKNESS**  
gr / mtl 500 ± 7%

**WIDTH**  
cm 150 ± 5% | ” 59 ± 5%



# Tweed.



Almond 505

Sand 502

Rose 503

Brown 504

Coffee 551

Chestnut 552



Banana 51

Dark gold 52

Mandarin 102

Cadmium 101

Orange 2105

Terra di Siena 103



Pistachio 451

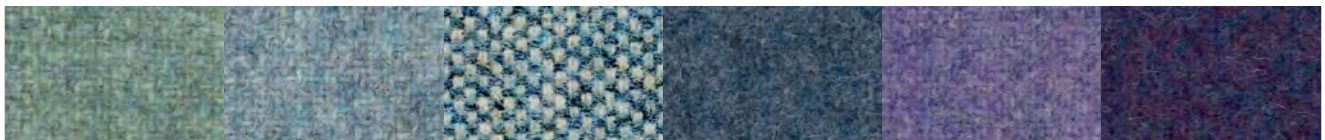
Pond 2457

Foliage 452

Racing green 453

Teal blue 454

Blue 303



Aqua green 455

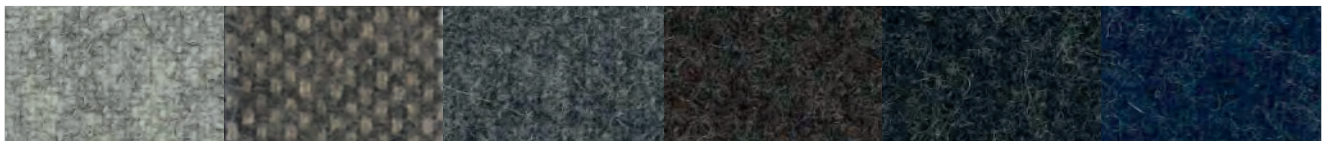
Air blue 351

River 2460

Grey blue 301

Orchid 251

Purple 252



Ash grey 601

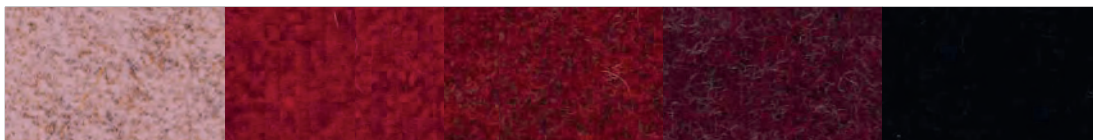
Melting grey 2606

Rock grey 602

Old brown 553

Dark grey 603

Night blue 302



Pink 152

Red 211

Antique ruby 201

Berry 202

Full black 651

