

# Rivestimenti

## AVVERTENZE GENERALI

Le immagini presenti sono indicative, si consiglia sempre di consultare la cartella rivestimenti e finiture con i campioni reali.

Lievi variazioni di colore e tonalità possono derivare dal processo produttivo del materiale.

I colori chiari non devono essere messi a contatto con tessuti e capi d'abbigliamento trattati con coloranti non fissati, o con scarse solidità di tintura, onde evitare macchie ed aloni di coloranti di cui non possiamo garantire la pulitura.

I tessuti spalmati (ecopelli) possono essere sanificati superficialmente come da decreto del Ministero della Salute con soluzioni di acqua e alcool etilico al 70% e prodotti disinfettanti commerciali pronti all'uso. Si consiglia di provare il prodotto su un angolo nascosto della superficie da pulire.

Evidenziamo speciali trattamenti, antimicrobici, antibatterici e antimicotici, che caratterizzano da sempre alcuni nostri rivestimenti, per creare un'efficace barriera difensiva contro batteri, acari e funghi, uniti ad eccezionali caratteristiche di praticità e durata nel tempo.

## Planet

Cat. A Similpelle

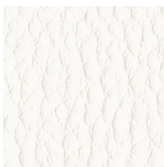
Resistenza al fuoco: UNI 9175

Classe 1IM - EN 1021 - BS 5852 - CA TB117 - M2

Composizione: 87,5% PVC - 12,5% Cotone

Peso: 640 g/mq

Resistenza all'abrasione: 100.000 cicli Martindale



A 31F



A 32F



A 29F



A 37F



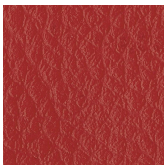
A 28F



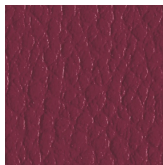
A 30F



A 35F



A 39F



A 36F



A 26F



A 34F



A 38F



A 27F

## 3D Fabric

Cat. A Tessuto Poliestere

Utilizzabile come rete schienale solo per il mod. Key Bold e come rivestimento su tutta la gamma

Kastel

Resistenza al fuoco: UNI 9175 Classe 1IM - BS5852

Certificati: OEKO-TEX STANDARD 100

Composizione: 100% Poliestere

Peso: 360 g/mq

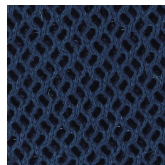
Resistenza all'abrasione: 60.000 cicli Martindale



A 3BE



A 3GR



A 3BL



A 3NE

# Rivestimenti

## Skill/Secret

Cat. C Similpelle

Resistenza al fuoco: UNI 9175 Classe 1IM - EN 1021 - BS 5852 - CA TB117

Composizione: 76% PVC - 2% Poliuretano - 22% PES

Peso: 540 g/mq

Resistenza all'abrasione: 60.000 cicli Martindale



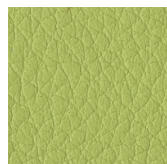
C 40F



C 41F



C 42F



C 46F



C 50F



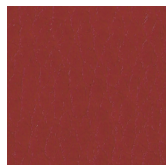
C 48F



C 47F



C 43F



C 51F



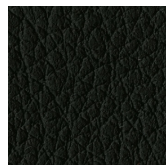
C 53F



C 45F



C 49F



C 52F

## Trevi

Cat. C Tessuto

Resistenza al fuoco: Classe 1 - UNI 9175 Classe 1IM - M1 - BS 5852 - EN 1021 - CA TB117

Certificati: OEKO-TEX STANDARD 100

Composizione: 100% Poliestere Trevira CS

Peso: 450 g/mq

Resistenza all'abrasione: 70.000 cicli Martindale



C 38G



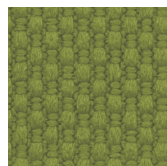
C 38T



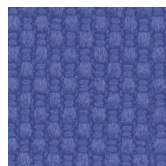
C 381



C 38M



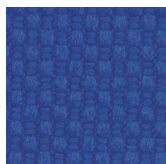
C 385



C 383



C -38



C 387



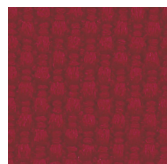
C 38L



C 380



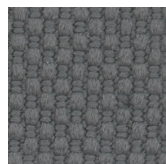
C 382



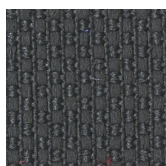
C 386



C 38P



C 384



C 38A



C 38H



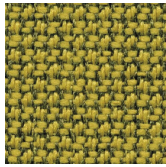
C 388

# Rivestimenti

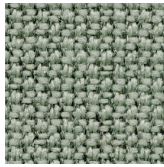
## Cura

Cat. C Tessuto

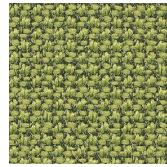
Tessuto riciclato e riciclabile  
Resistenza al fuoco: BS 5852 - CA TB117 - ASTM E 84 Class 1  
Certificati: OEKO-TEX STANDARD 100 - EU ECOLABEL  
Composizione: 100% Poliestere riciclato  
Peso: 300 g/mq  
Resistenza all'abrasione: 100.000 cicli Martindale



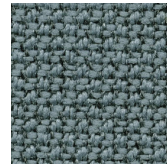
C 31C



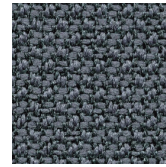
C 30C



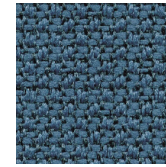
C 39C



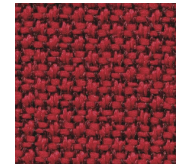
C 32C



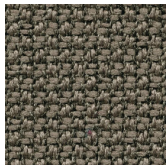
C 34C



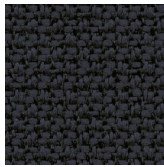
C 36C



C 37C



C 33C



C 38C

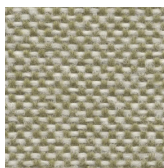
## Jet

Cat. C Tessuto

Resistenza al fuoco: UNI 9175 Classe 1IM - M1 - BS 5852 - EN 1021 - CA TB117 - B1 - BS 7176  
Certificati: OEKO-TEX STANDARD 100 - UE ECOLABEL  
Composizione: 100% Poliestere Trevira CS  
Peso: 260 g/mq  
Resistenza all'abrasione: 65.000 cicli Martindale



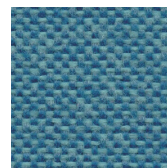
C 37J



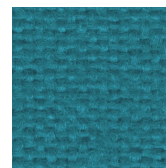
C 30J



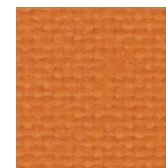
C 34J



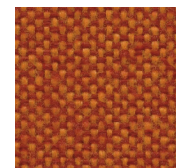
C 32J



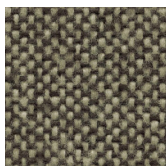
C 36J



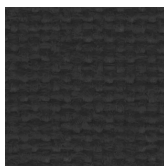
C 35J



C 31J



C 33J



C 38J

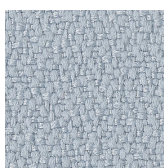
## Xtreme

Cat. C Tessuto

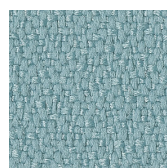
Resistenza al fuoco: UNI 9175 Classe 1IM - EN 1021 - BS 5852 - DIN 4102 B1  
Certificati: OEKO-TEX STANDARD 100 - UE ECOLABEL  
Composizione: 100% Poliestere riciclato  
Peso: 310 g/mq  
Resistenza all'abrasione: 100.000 cicli Martindale



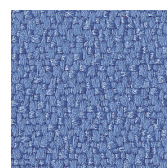
C 335



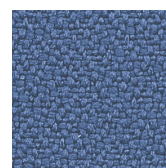
C 349



C 333



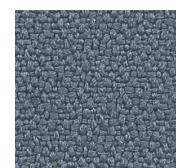
C 338



C 325



C 340



C 324

# Rivestimenti

## Mirage

Cat. C Tessuto

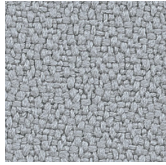
Resistenza al fuoco: UNI 9175 Classe 1IM - EN 1021 - BS 5852 - DIN 4102 B1

Certificati: OEKO-TEX STANDARD 100

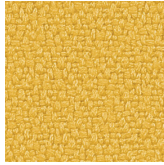
Composizione: 100% Poliestere Trevira CS

Peso: 330 g/mq

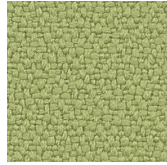
Resistenza all'abrasione: 100.000 cicli Martindale



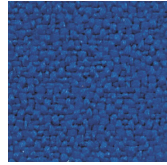
C 331



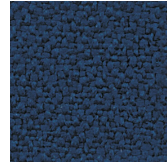
C 336



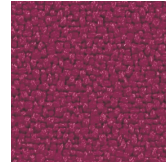
C 332



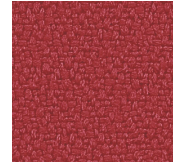
C 326



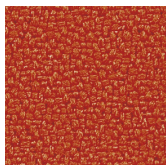
C 330



C 337



C 329



C 334



C 327



C 328

## Extrema Ikon

Cat. D Similpelle

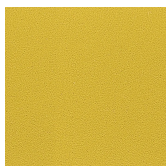
Trattamento antimicrobico, impermeabilità

Resistenza al fuoco: UNI 9175 Classe 1IM - EN 1021 - BS 5852 - CA TB117

Composizione: 63% Poliuretano - 29% Cotone - 8% PES

Peso: 480 g/mq

Resistenza all'abrasione: 150.000 cicli Martindale



D 474



D 482



D 476



D 471



D 472

## Extrema AU

Cat. D Similpelle

Trattamento antimicrobico, impermeabilità

Resistenza al fuoco: UNI 9175 Classe 1IM - EN 1021 - BS 5852 - CA TB117

Composizione: 63% Poliuretano - 29% Cotone - 8% PES

Peso: 480 g/mq

Resistenza all'abrasione: 150.000 cicli Martindale



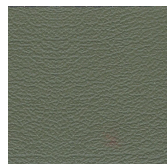
D 420



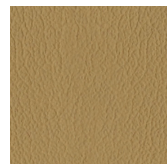
D 425



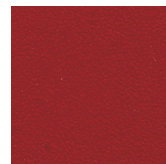
D 426



D 430



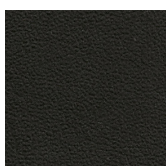
D 429



D 422



D 423



D 424

# Rivestimenti

## Poseidon

Cat. D Tessuto

Tessuto riciclato e riciclabile

Resistenza al fuoco: UNI 9175 Classe 1IM - EN 1021 - BS 5852 - CA TB117

Certificati: OEKO-TEX STANDARD 100 - Seaqual

Composizione: 100% Poliestere riciclato Seaqual

Peso: 500 g/mq

Resistenza all'abrasione: 100.000 cicli Martindale



D 40P



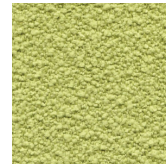
D 49P



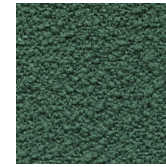
D 45P



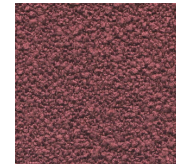
D 46P



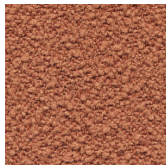
D 43P



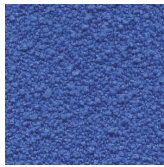
D 44P



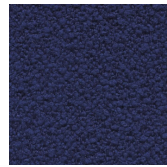
D 42P



D 41P



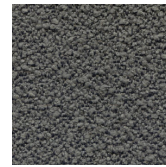
D 47P



D 48P



D 51P



D 50P



D 52P

## Cyber

Cat. D Tessuto

Tessuto riciclato e riciclabile

Resistenza al fuoco: BS EN 1021 - CA TB117

Certificati: OEKO-TEX STANDARD 100 - UE ECOLABEL

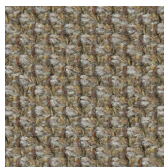
Composizione: 100% Poliestere riciclato

Peso: 407 g/mq

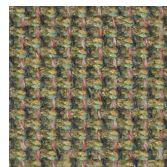
Resistenza all'abrasione: 120.000 cicli Martindale



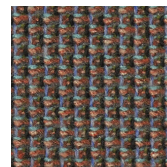
D 41Y



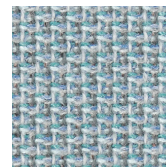
D 42Y



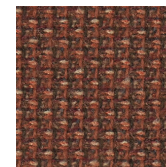
D 40Y



D 43Y



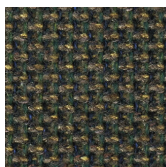
D 44Y



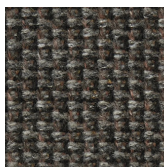
D 45Y



D 46Y



D 47Y



D 48Y

## Valencia

Cat. D Similpelle

Protezione antibatterica, Permablok3, resistenza UV, finitura antimacchia, protezione antibatterica, antimicotica e antifunginea

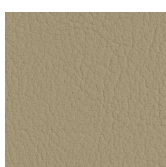
Resistenza al fuoco: UNI 9175 Classe 1IM - EN 1021 - DIN 4102 - NFPA 260 - CA TB117

Composizione: 100% Vinile

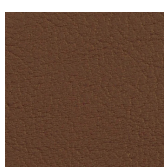
Certificati: Greenguard Gold - Carbon Neutral

Peso: 650 g/mq

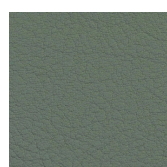
Resistenza all'abrasione: 300.000 cicli Martindale



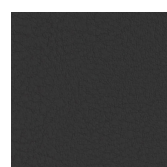
D 50V



D 51V



D 52V



D 53V

# Rivestimenti

## Fenice

Cat. D Tessuto

Resistenza al fuoco: UNI 9175 Classe 1IM - EN 1021 - BS 5852 - CA TB117  
Certificati: OEKO-TEX STANDARD 100  
Composizione: 75% Lana - 25% Poliammide  
Peso: 335 g/mq  
Resistenza all'abrasione: 100.000 cicli Martindale



D 503



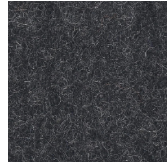
D 505



D 504



D 508



D 509

## Jungla

Cat. D Tessuto

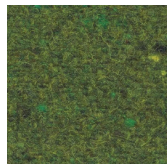
Tessuto riciclato e riciclabile  
Resistenza al fuoco: UNI 9175 Classe 1IM - EN 1021 - BS 5852 - CA TB117  
Certificati: OEKO-TEX STANDARD 100  
Composizione: 75% Lana - 20% Poliammide - 5% AF  
Peso: 395 g/mq  
Resistenza all'abrasione: 100.000 cicli Martindale



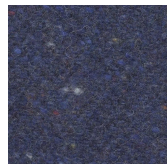
D 510



D 511



D 512

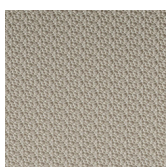


D 513

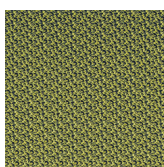
## Hitch

Cat. D Tessuto tecnico

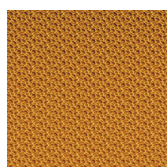
Protezione antibatterica, Permablok3, resistenza UV, finitura antimacchia, impermeabilità  
Resistenza al fuoco: UNI 9175 Classe 1IM - EN 1021 - DIN 4102 - NFPA 260 - CA TB117  
Certificati: Greenguard Gold - Carbon Neutral  
Composizione: 100% Vinile  
Peso: 680 g/mq  
Resistenza all'abrasione: 100.000 cicli Martindale



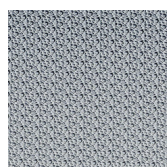
D 802



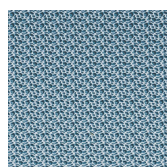
D 804



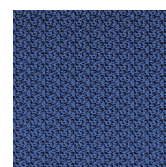
D 803



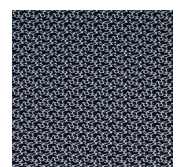
D 805



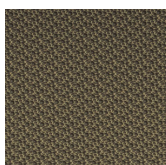
D 806



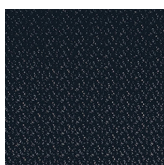
D 808



D 807



D 810



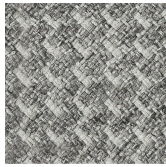
D 809

# Rivestimenti

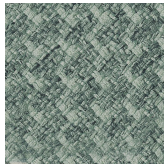
## Bond

Cat. D Tessuto

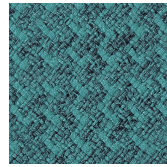
Tessuto riciclato e riciclabile  
Resistenza al fuoco: EN 1021 - CA TB117  
Certificati: OEKO-TEX STANDARD 100 - UE ECOLABEL  
Composizione: 100% Poliestere riciclato  
Peso: 379 g/mq  
Resistenza all'abrasione: 100.000 cicli Martindale



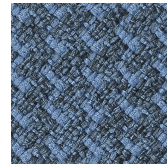
D 54B



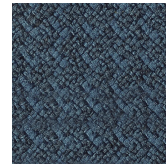
D 52B



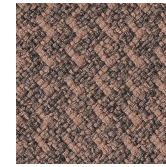
D 51B



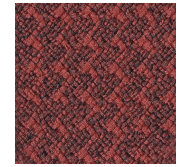
D 55B



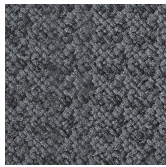
D 53B



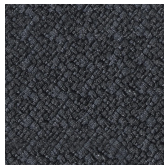
D 56B



D 57B



D 58B



D 59B

## Pelle

Cat. P Vera pelle

Resistenza al fuoco: CA TB117 - BS 5852 - BS EN 1021  
Composizione: Pelle bovina origine europea  
Certificati: Biobased product - Carbon Neutral - Blu Angel  
Spessore: 0,8 - 1,0 mm



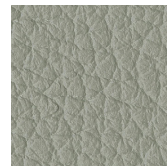
P 901



P 915



P 917



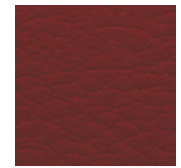
P 905



P 908



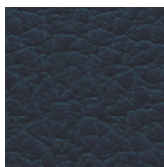
P 909



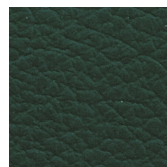
P 914



P 920



P 912



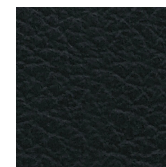
P 910



P 911



P 902

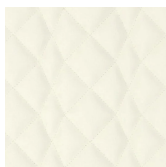


P 903

## Skill Diamond

Similpelle

Solo per schienale trapuntato mod. Klint  
Resistenza al fuoco: UNI 9175 Classe 1IM - EN 1021  
Composizione: 69% P.V.C. plastificato - 30% Cotone - 1% Poliuretano  
Resistenza all'abrasione: 50.000 cicli Martindale



C 40T



C 41T



C 49T



C 52T

# Rivestimenti

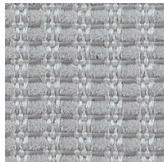
## Mesh

Rete

Solo per mod. Kuper, Karma, Korium, Kosmo, Kelly  
Certificati: OEKO-TEX STANDARD 100  
Composizione: 55% Poliestere - 45% Poliammide  
Peso: 280 g/mq  
Resistenza all'abrasione: 100.000 cicli Martindale



218



221

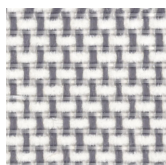


222

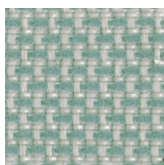
## Shrinx 4902

Rete

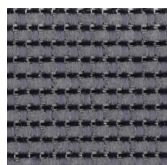
Solo per mod. Key Line  
Resistenza al fuoco: EN 1021  
Composizione: 70% Poliestere - 30% Poliammide  
Peso: 375 g/mq  
Resistenza all'abrasione: 170.000 cicli Martindale



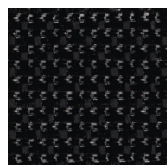
Beige



Verde



Grigio



Nero

# Finiture

## AVVERTENZE GENERALI

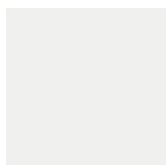
Le immagini e i riferimenti dei codice colori sono indicativi, si consiglia sempre di consultare la cartella rivestimenti e finiture con i campioni reali.

I prodotti con materiale riciclato (PSV plastica seconda vita) possono presentare piccole variazioni di colore o lievi imperfezioni superficiali da considerarsi caratteristiche intrinseche del processo e garanzia dell'effettivo impiego di materiale riciclato.

## Kicca

Polipilene

Colori scocca



Bianco  
RAL 9003



Tortora  
RAL 1019



Arancio  
RAL 2008



Rosso  
RAL 3020



Rosso mattone  
(NEW)  
NCS 3560-Y70R



Verde  
RAL 6039



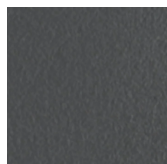
Verde oliva  
(NEW)  
PANTONE 18-0527  
TCX



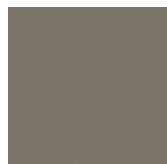
Turchese  
NCS S 4010-B50G



Blu oceano  
(NEW)  
NCS S 7010-B10G



Grigio  
RAL 7043



Lava (NEW)  
PANTONE 405 C

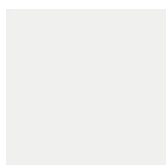


Nero

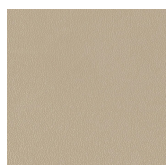
## Kalea

Polipilene

Colori scocca



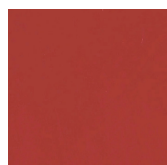
Bianco  
RAL 9003



Tortora  
RAL 1019



Arancio  
RAL 2008



Rosso  
RAL 3020



Rosso mattone  
(NEW)  
NCS 3560-Y70R



Verde  
RAL 6039



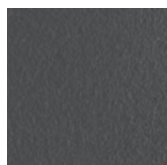
Verde oliva  
(NEW)  
PANTONE 18-0527  
TCX



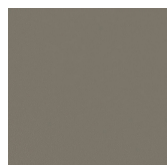
Turchese  
NCS S 4010-B50G



Blu oceano  
(NEW)  
NCS S 7010-B10G



Grigio  
RAL 7043



Lava (NEW)  
PANTONE 405 C



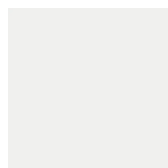
Nero

# Finiture

## Kross

Polipropilene

Colori scocca



Bianco  
RAL 9003



Tortora  
RAL 7032



Rosso  
RAL 3009



Verde  
RAL 6013



Ottanio  
RAL 5021

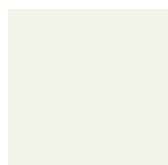


Nero

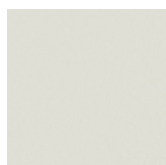
## Kicca One

Polipropilene rinforzato fibra vetro

Colori sedia



Bianco  
RAL 9010



Grigio chiaro  
RAL 9018



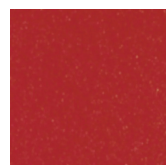
Beige (NEW)  
RAL 7032



Tortora  
RAL 1019



Caramello  
RAL 050 50 30



Rosso  
RAL 3013



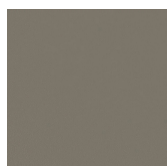
Verde  
RAL 1027



Salvia  
RAL 7003



Turchese  
NCS S 4010-B50G



Lava  
PANTONE 405 C

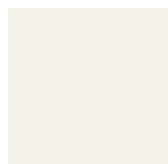


Grigio Ardesia  
(NEW)  
RAL 7022

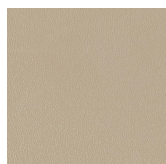
## Klia

Polipropilene rinforzato fibra vetro

Colori sedia



Bianco  
RAL 9010



Tortora  
RAL 1019



Giallo  
RAL 1004



Rosa Antico



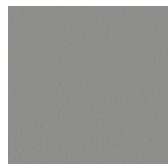
Rosso  
RAL 3013



Verde  
RAL 6011



Turchese  
NCS S 4010-B50G



Grigio  
RAL 7037



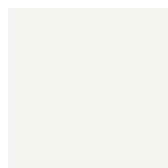
Grigio Ardesia  
RAL 7022

# Finiture

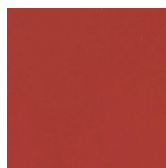
## Krizia

Polycarbonato

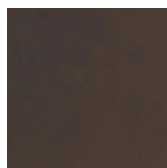
Colori scocca



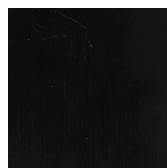
Bianco



Rosso  
RAL 3001



Moka  
RAL 8010



Nero  
RAL 9017



Trasparente

## Koki

Acciaio verniciato

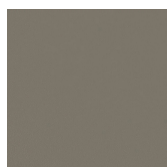
Sedile e struttura



Rosso mattone  
(NEW)  
NCS 3560-Y70R



Verde oliva  
(NEW)  
PANTONE 18-0527  
TCX



Lava  
PANTONE 405 C

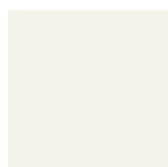


Nero  
RAL 9005

## Kuark

Polietilene

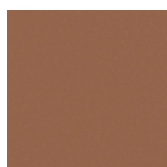
Colori poltrona



Bianco  
RAL 9010



Senape



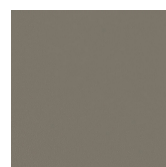
Terracotta



Bordeaux



Azzurro

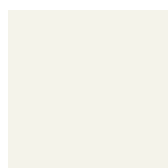


Lava  
PANTONE 405 C

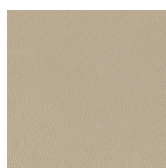
## Kensho

Acciaio verniciato

Colori piano e base



Bianco  
RAL 9010



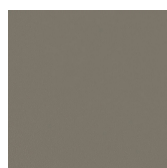
Tortora  
RAL 1019



Giallo  
RAL 1004



Arancio  
RAL 2010

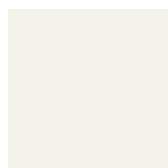


Lava  
PANTONE 405 C

## Kapio

Acciaio verniciato

Colori piano e base



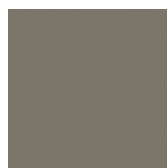
Bianco  
RAL 9010



Tortora  
RAL 1019



Giallo  
RAL 1004



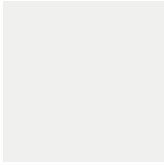
Lava  
PANTONE 405 C

# Finiture

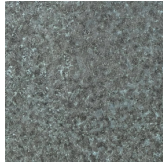
## Kyu

HPL

Colori piano



Bianco  
RAL 9003



Verde rame

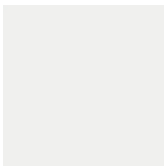


Nero  
RAL 9005

## Kyu

Acciaio verniciato

Colori base in tondino



Bianco  
RAL 9003



Verde  
PANTONE 447 U

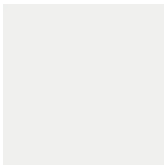


Nero  
RAL 9005

## Kairos

Laminato

Piano tavolo



Bianco  
RAL 9003



Rosso mattone  
(NEW)  
NCS 3560-Y70R

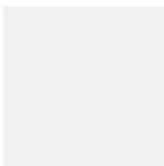


Patagonia  
Solo per piano  
120x120

## Kairos

Acciaio verniciato

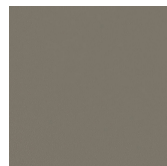
Base 4 gambe



Bianco  
RAL 9003



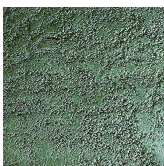
Rosso mattone  
(NEW)  
NCS 3560-Y70R



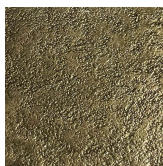
Lava  
PANTONE 405 C

## Kobi

Piano tavolo



Verde



Lava



Rovere chiaro

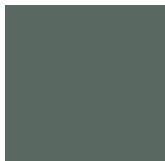
# Finiture

## Kobi

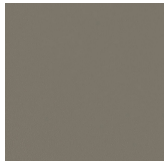
Acciaio verniciato

---

Colori struttura



Verde  
PANTONE 447 U



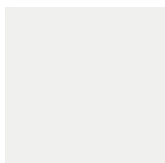
Lava  
PANTONE 405 C

## Key Move

Acciaio verniciato

---

Colori tavolino



Bianco  
RAL 9003



Tortora  
RAL 1019



Nero  
RAL 9005