

COLOURS AND FINISHES

COLORI E FINITURE

Techno-polymer / Tecnopolimero

							
05 Light blue / Azzurro	99 Lavender / Lavanda	98 Pale blue / Avio	34 Light blue / Azzurro	08 Blue / Blu	09 Dark Blue / Blu scuro	16 Indigo / Indaco	11 Night Blue / Blu notte
							
03 Light green / Verdino	42 Green / Verde	51 Sage green / Salvia	35 Lime / Lime	41 Green / Verde	25 Olive Green Verde Oliva	23 Military green Verde militare	24 Forest green Verde foresta
							
36 Mustard / Senape	02 Yellow / Giallo	38 Saffron / Zafferano	07 Apricot / Albicocca	33 Orange / Arancione	20 Lobster / Aragosta	06 Red / Rosso	12 Brick / Mattone
							
26 Marsala / Marsala	22 Bordeaux / Bordeaux	01 Beige / Beige	54 Sand / Sabbia	18 Dusty Rose Polvere Rosa	13 Brown / Marrone	52 Turtledove / Tortora	55 Mineral Grey Grigio Minerale
							
39 Brown / Marrone	00 White / Bianco	14 Pearl grey / Grigio perla	04 Grey / Grigio	21 Grey / Grigio	10 Black / Nero		
							
46 Transp. green Verde trasp.	45 Transp. red Rosso trasp.	47 Transp. Amber Ambra trasp.	44 Transparent Trasparente				

COLOURS AND FINISHES

COLORI E FINITURE

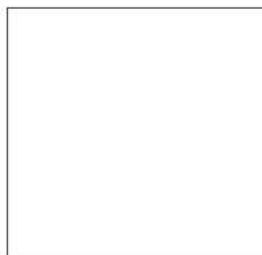
Metal finishes / Finiture metalli



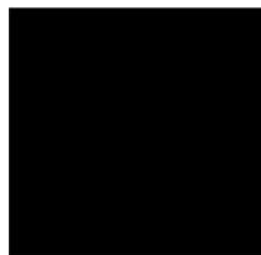
C
Chromed / Cromato



S
Satin / Satinato



B
White / Bianco



N
Black / Nero



D
Gold / Oro



98
Pale blue / Avio



16
Indigo / Indaco



25
Olive Green / Verde Oliva



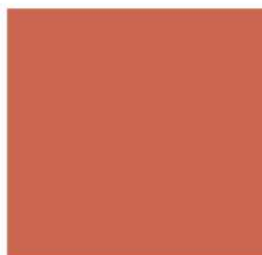
35
Lime / Lime



02
Yellow / Giallo



06
Red / Rosso



12
Brick / Mattone



22
Bordeaux / Bordeaux



54
Sand / Sabbia



18
Dusty Rose / Polvere Rosa



55
Mineral Gray / Grigio Minerale



14
Pearl Grey / Grigio Perla



21
Grey / Grigio Antracite

Bases and frames wooden finishes / Finiture legno basi e telai



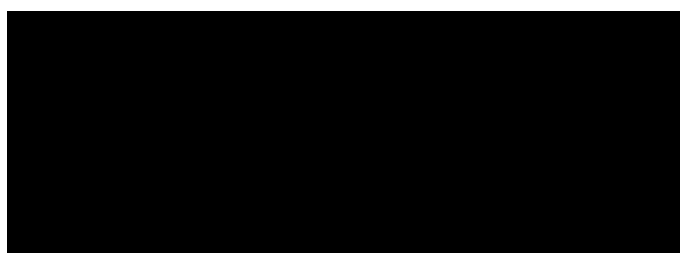
00 White stained / Bianco



F Natural Beech / Faggio naturale



RN Natural Oak / Rovere Naturale



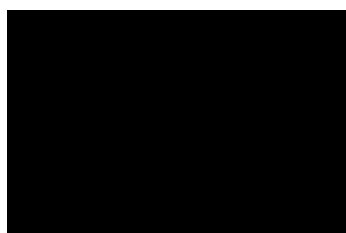
10 Black stained / Nero

F-00-10 finishes arise from Beech Essence. RN finish come from Oak Essence
Le finiture F-00-10 derivano da essenza di Faggio. La finitura RN deriva da essenza di Rovere.

Standard Compactop Surface - Flat black edge / Bordo piatto nero



00

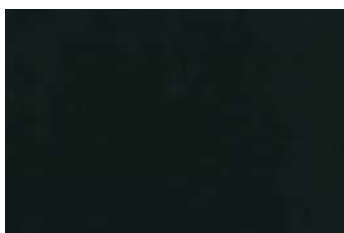


10



14

Special Compactop Surface Fenix - Black edge / Bordo nero - www.fenixforinteriors.com



0720

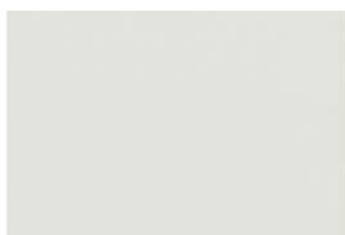
COLOURS AND FINISHES

COLORI E FINITURE

Special Compactop Surface - Solid - Black edge / Bordo nero - www.arpaindustriale.com



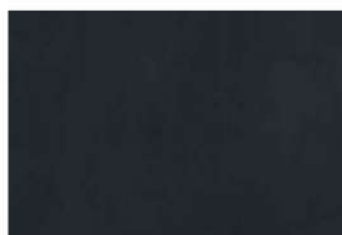
244



527



247



526

Special Compactop Surface - Wood Effect - Brown edge / Bordo marrone - www.arpaindustriale.com



4529



4543



4587



4519



4573



4511



4575



4512



4517

Special Compactop Surface - Stone, Concrete and Marble Effect - www.arpaindustriale.com - www.lamicolor.it



3520
Edge similar to the top
Bordo abbinato al top



5547
White edge
Bordo bianco



6087
Brown edge
Bordo marrone



6075
Edge similar to the top
Bordo abbinato al top



6078
Black edge
Bordo nero



3447
Black edge
Bordo nero



3445
Edge similar to the top
Bordo abbinato al top



6089
Brown edge
Bordo marrone



3276
Brown edge
Bordo marrone



6086
Black edge
Bordo nero



3522
Black edge
Bordo nero



3349
Black edge
Bordo nero



3192
Black edge
Bordo nero



6084
Black edge
Bordo nero



6076
Black edge
Bordo nero

COLOURS AND FINISHES

COLORI E FINITURE

Standard Laminated Surface



F



W



RN



00



10



SB

Special Laminated Surface - Wood Effect



B01



X41



61M



V32

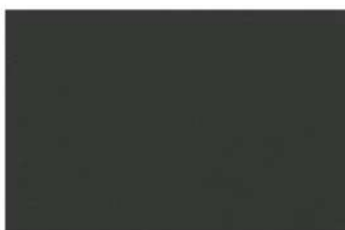


WG8



WG9

Special Laminated Surface - Fenix - www.fenixforinteriors.com



0720



0718



2630



2629



2628

Marble Surface



MBC - BIANCO CARRARA



MNM - NERO MARQUINA



MVG - VERDE GUATEMALA



MED - EMPERADOR DARK

Gres Porcelain Surface



GCI - GRES CALACATTA IMPERIAL



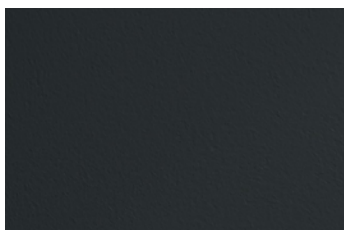
GTM - GRES TAJ MAHAL



GTS - GRES TRAVERTINO SAND



GBS - GRES BOOST SMOKE



GBL - GRES BLACK LAVA



GNM - GRES NERO MARQUINA

COLOURS AND FINISHES COLORI E FINITURE



K King Fabric / Tessuto King



6001

6091

6034

6052

7019

7022



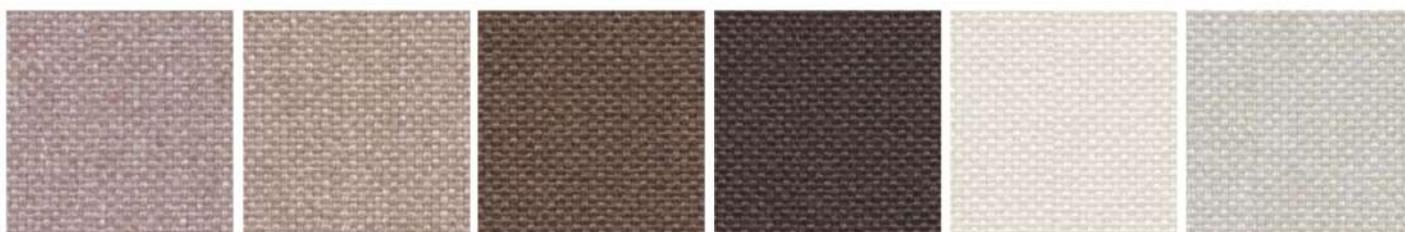
3030

3082

4021

4032

5001



1033

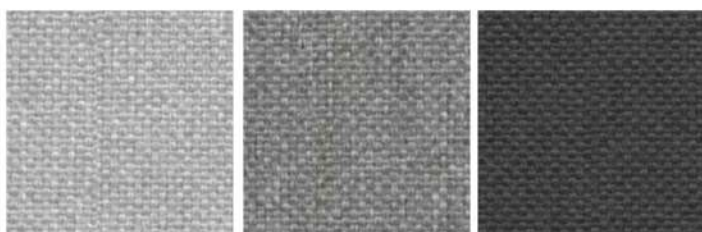
1008

2003

2007

1012

1025



8032

8006

8011

- Composition: 100% POLYESTER - TREVIRA CS
- Abrasion: UNI EN ISO 12947-2 80.000 Cycle Martindale $\pm 10\%$
- Light Resistance-Xenotest: UNI EN ISO 105-B02 / 6 (tol from 5 to 8)
- Fire proof: UNI 9174 - 8456 Class C1, UNI 9175 Class 1, DIN 4102 Class B1, NF 92501-7 Class M1, NF D 60013, 11M (UNI 9175) Class AM18, EN 1021-1 & 2, BS Crib 5, BS 7176 Class Medium Hazard, EN 13773 Class 1, OENORM 3800-1 Class B1,Q1,TR1, California TB117, USA NFPA 701, USA NFPA 260, IMO A 652 (16) Part 8 Upholstery
- Maintenance: Standard 60° C cotton cycle.

Visit www.fidivi.com for complete colours range / Visionate la completa gamma colori su www.fidivi.com



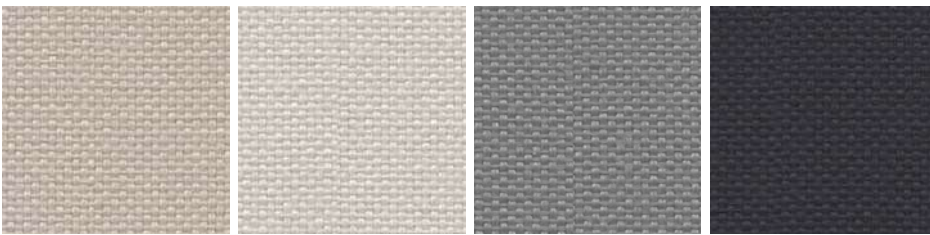
L King L Fabric / Tessuto King L



6071

3090

4027



1010

1025

8014

8010

- Composition: 100% POLYESTER
- Abrasion: UNI EN ISO 12947/2 70.000 Cycle Martindale $\pm 10\%$
- Light Resistance-Xenotest: UNI EN ISO 105-B02 / 6 (tol from 5 to 8)
- Fire proof: UNI 9174 - 8456 Class C1, DIN 4102 Class B1, NF P 92501-7 Class M1, IMO Res. A652 (16), NF D 60013 Class AM18, EN 1021-1 & 2, BS 5852 part II Crib 5, BS 7176 Medium Hazard, ONORM B 3825-Onorm A 3800-1 Class B1-Q1-TR1, Euroclass EN 13501-1, EN 1021-1 & 2, 1IM (UNI 9175), California TB 117
- Maintenance: Use vacuum-cleaner, don't brush.

Visit www.fidivi.com for complete colours range / Visionate la completa gamma colori su www.fidivi.com

COLOURS AND FINISHES COLORI E FINITURE

DK Kvadrat Fabric (Steelcut3) / Tessuto Kvadrat (Steelcut3)



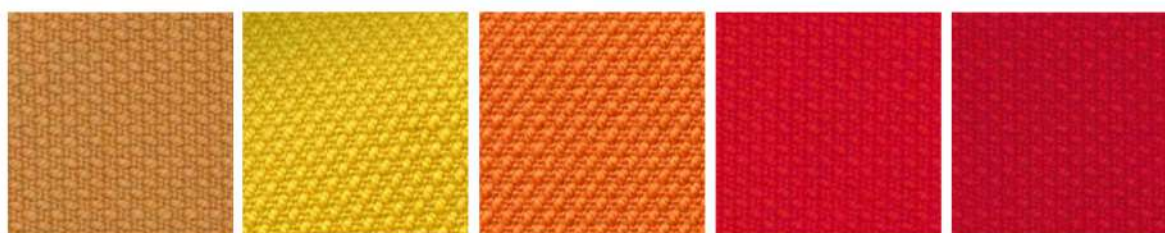
672

732

780

932

975



252

445

535

545

552



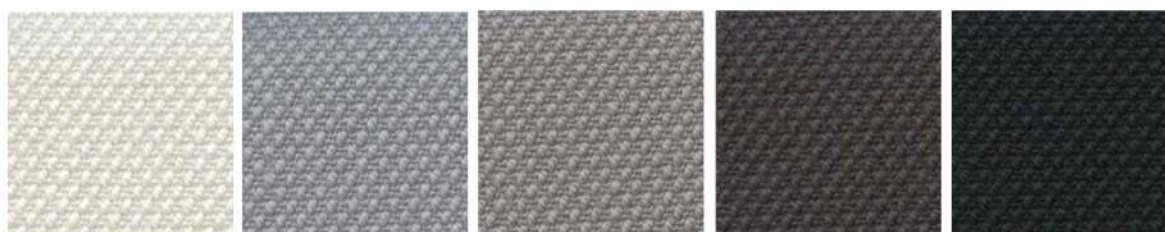
220

240

365

605

655



110

140

155

180

190

- Composition: 90% New wool worsted - 10% Nylon
- Abrasion: 100.000 Martindale rubs, EN ISO 12947
- Lightfastness: Note 5-7, ISO 105-B02
- Fire proof: AS/NZS 1530.3, BS 5852 crib 5 with treatment, BS 5852 part 1, IMO FTP Code 2010 Part 8, NF D 60 013, NFPA 260, SN 198 898 5.3 with treatment, UNI 9175 1IM, US Cal. BuLL. 117-2013, EN 1021-1/2, AS/NZS 3837 class 2, ÖNORM B1/Q1, ASTM E84 Class A Unadhered, ASTM E84 Class B Adhered

Visit www.kvadrat.dk for complete colours range / Visionate la completa gamma colori su www.kvadrat.dk

DK Kvadrat Fabric (Remix3) / Tessuto Kvadrat (Remix3)



733

722

743

753

923

942



982

973

612

422

632

653



682

692

233

113

123

143



183

- Composition: 90% wool, 10% nylon
- Abrasion: Approximately 100.000 Martindale rubs, EN ISO 12947
- Lightfastness: Note 5-7, ISO 105-B02
- Fire proof: AS/NZS 1530.3, BS 5852 crib 5 with treatment, BS 5852 ignition source 3, BS 5852 part 1, IMO FTP Code 2010 Part 7 with treatment, IMO FTP Code 2010 Part 8, NF D 60 013, NFPA 260, SN 198 898 5.3 with treatment, UNI 9175 1IM, US Cal. Bull. 117-2013, EN 1021-1/2, AS/NZS 3837 class 2, ÖNORM B1/Q1, ASTM E84 Class A Unadhered, ASTM E84 Class A Adhered, GB 50222 B1 with treatment

Visit www.kvadrat.dk for complete colours range / Visionate la completa gamma colori su www.kvadrat.dk

COLOURS AND FINISHES COLORI E FINITURE

S Superb Trevira Fabric / Tessuto Velvet-Velluto



5130

5127

5131

5140

5134

5135



5106

5112

5118

5119

5114

5103



5144

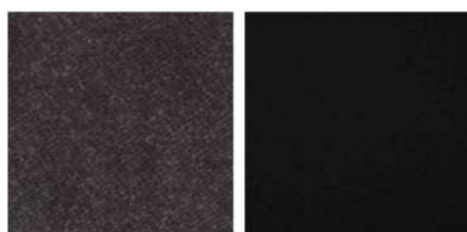
5143

5149

5142

5145

5152



5151

5147

- Composition: 100% POLYESTER - TREVIRA CS
- Abrasion: UNI EN ISO 12947-2 100.000 Cycles
- Light Resistance-Xenotest: UNI EN ISO 105-B02 ≥5 Blue Scale
- Fire proof: UNI 8456 – 9174 classe 1, UNI 9175 classe 1IM ,EN 1021-1 EN 1021-2, BS 5852 crib 5, DIN 4102 B1, NF P 92 503-507 M1, TB 117:2013 UNI EN 13773:2004 classe 1, NFPA 701:2015
- Maintenance: Dust gently or pass the surface with a damp cloth.

Visit www.flukso.it for complete colours range / Visionate la completa gamma colori su www.flukso.it

B Blazer Fabric / Tessuto Blazer



CUZ22

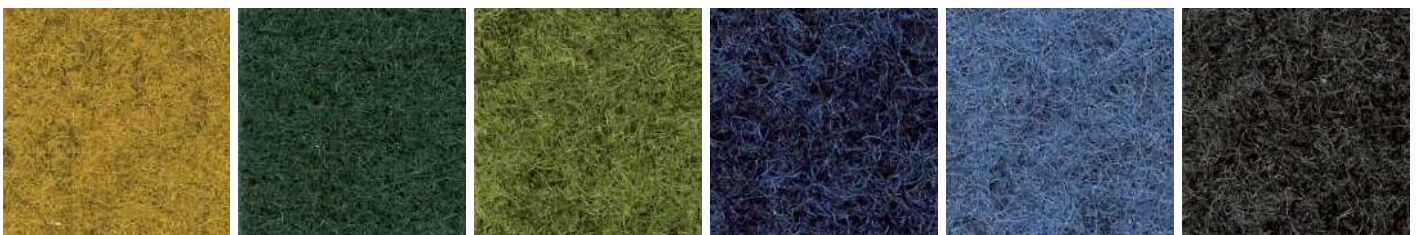
CUZ1E

CUZ86

CUZ47

CUZ18

CUZ63



CUZ82

CUZ1N

CUZ1K

CUZ62

CUZ1W

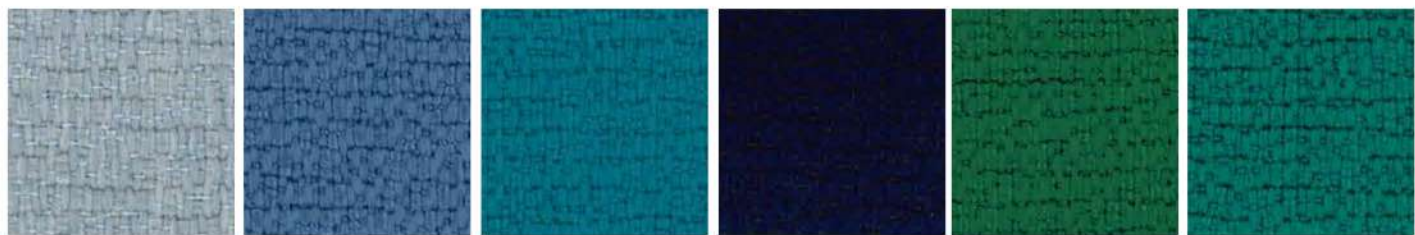
CUZ67

- Composition: 100% VIRGIN WOOL
- Abrasion: BS EN ISO 12497-2 65.000 Cycle Martindale
- Light Resistance-Xenotest: UNI EN ISO 105-B02 / 5
- Fire proof: BS EN 1021 Part 1, BS EN 1021 Part 2, BS 7176 Low Hazard, BS EN 13501-1:2007 Class D, NF D 60-013 AM18, UNI 9175:2010 Class 1IM, BS476 part 7 Class 1, ONORM B 3825, IMOFTP Code (part 8)
- Maintenance: Use the vacuum-cleaner.

Visit www.camirafabrics.com for complete colours range / Visionate la completa gamma colori su www.camirafabrics.com

COLOURS AND FINISHES COLORI E FINITURE

FO Fortezza 93 Fabric / Tessuto Fortezza 93



30-1

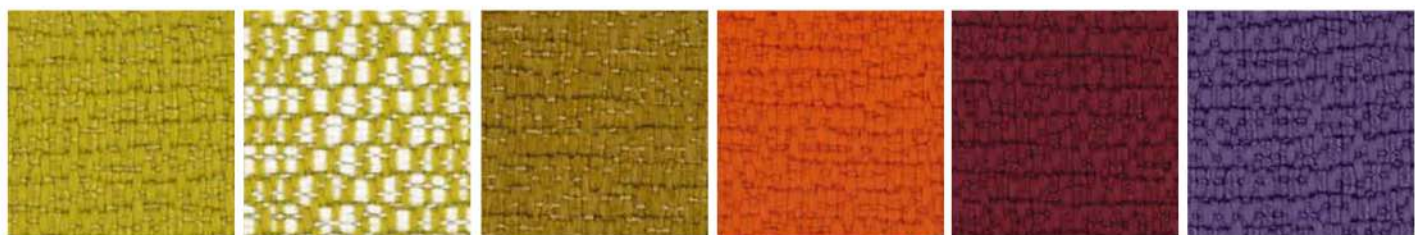
67-1

44-1

46-1

65-1

56-1



43-1

43-2

48-1

47-1

69-1

68-1



23-1

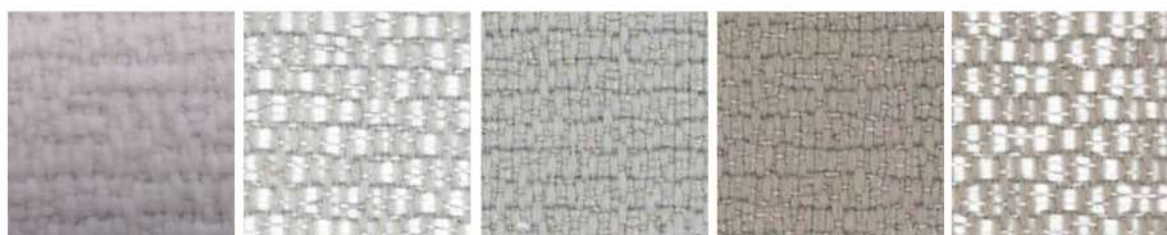
66-1

24-1

41-1

64-1

42-1



38-1

39-2

39-1

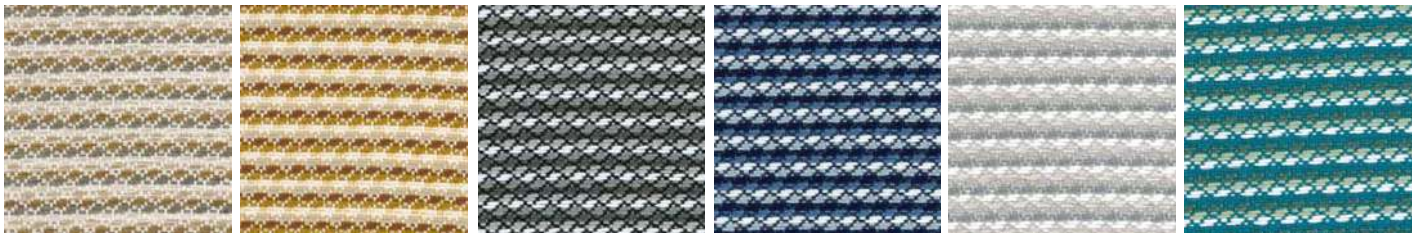
17-1

17-2

- Composition: 100% Polyolefinic
- Abrasion Martindale: UNI EN ISO 12947 35.000 rubs/cicli
- Seam slippage: BS 2543 Warp: 3 mm Weft: 3 mm
- Pilling: UNI EN ISO 12945-2 4/5 (2000 rubs)
- Colour fastness Dry Rubbing: UNI EN ISO 105-X12 Staining 4/5, Colour change 4/5
- Colour fastness Wet Rubbing: UNI EN ISO 105-X12 Staining 4, Colour change 4
- Light Fastness: UNI EN ISO 105-B02 Blue scale 7, UNI EN ISO 105-B04 Blue scale 7
- Colour Fastness to Sea Water: UNI EN ISO 105:E02:1996 Colour change 4/5
- Colour Fastness to Chlorinated Water: UNI EN ISO 105:E03:2010 Colour change 4/5
- Fire proof: UNI 8456 - 9174 - CLASS 1 - ITALIAN FIRE SAFETY CLASSIFICATION - PASS BS EN 1021.1 : 1994 - SOURCE 0 - CIGARETTE TEST - PASS BS EN 1021.2 : 1994 - SOURCE 1 - BUTANE FLAME - PASS ON FR FOAM T.B. 117 (2013): SECTION 1 POSITIVE B1 ACCORDING TO DIN 4102, PART 1 (MAY 1998) NFPA 260:2013 - CLASS 1 IMO 2010 FTP CODE PART 8 - Resolution MSC 307(88) - Cigarette and Match Test EN 13773 (2004) CLASSE 1

Visit www.primafabrics.it for complete colours range / Visionate la completa gamma colori su www.primafabrics.it

FO Fortezza 9042 Fabric / Tessuto Fortezza 9042



T0-1

T0-2

T5-1

T8-1

T39-1

T44-1



T85-4

T100-1

T101-1

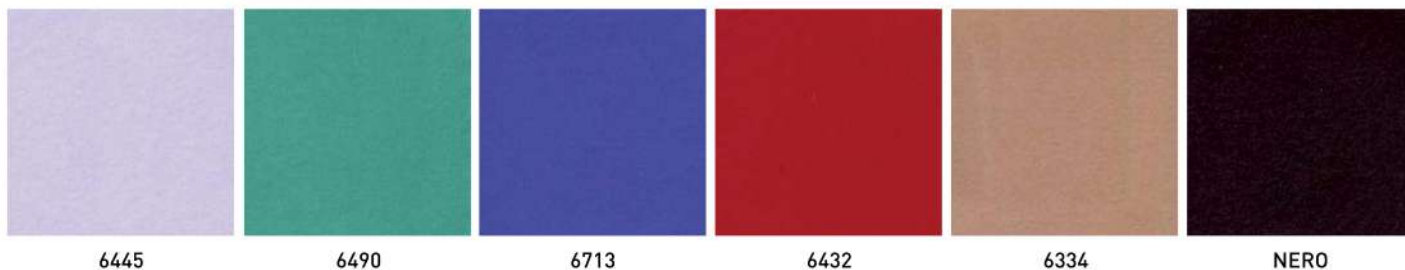
- Composition: 100% Polyolefinic
- Abrasion Martindale: UNI EN ISO 12947 35.000 rubs/cicli
- Seam slippage: BS 2543 Warp: 3 mm Weft: 3 mm
- Pilling: UNI EN ISO 12945-2 4/5 (2000 rubs)
- Colour fastness Dry Rubbing: UNI EN ISO 105-X12 Staining 4/5, Colour change 4/5
- Colour fastness Wet Rubbing: UNI EN ISO 105-X12 Staining 4, Colour change 4
- Light Fastness: UNI EN ISO 105-B02 Blue scale 7, UNI EN ISO 105-B04 Blue scale 7
- Colour Fastness to Sea Water: UNI EN ISO 105:E02:1996 Colour change 4/5
- Colour Fastness to Chlorinated Water: UNI EN ISO 105:E03:2010 Colour change 4/5
- Fire proof: UNI 8456 - 9174 - CLASS 1 - ITALIAN FIRE SAFETY CLASSIFICATION - PASS BS EN 1021.1 : 1994 - SOURCE 0 - CIGARETTE TEST - PASS BS EN 1021.2 : 1994 - SOURCE 1 - BUTANE FLAME - PASS ON FR FOAM T.B. 117 (2013): SECTION 1 POSITIVE B1 ACCORDING TO DIN 4102, PART 1 (MAY 1998) NFPA 260:2013 - CLASS 1 IMO 2010 FTP CODE PART 8 - Resolution MSC 307(88) - Cigarette and Match Test EN 13773 (2004) CLASSE 1

Visit www.primafabrics.it for complete colours range / Visionate la completa gamma colori su www.primafabrics.it

COLOURS AND FINISHES

COLORI E FINITURE

M Miki Fabric / Tessuto Miki



- Composition: Composizione 100% PL 65/75 g/m² – Composition 100% PL 65/75 g/m²
- Light Resistance-Xenotest: UNI EN ISO 105-B02 / 01
- Maintenance: Dust with a soft and dry cloth.

GR Progarden Fabric / Tessuto Progarden



051
MEDITERRANEAN BLUE

026
PISTACHIO

028
OLIVE GREEN

012
LINEN

683
SLATE

- Composition: 100% yarn dyed acrylic
- Martindale (ISO 12947-2): 15.000 cycles
- Dimensional change after washing at 40°C and drying (warp/weft) (ISO 5077): ± 2%/0%
- Breaking strength (warp/weft) (ISO 13934-1): 200/70 daN
- Elongation at break (warp/weft) (ISO 13934-1): 25%/25%
- Tear strength (warp/weft) (ISO 13937-1): 7/3,7 daN
- Resistance to seam (warp/weft) (ISO 13935-1): 50/50 daN

- Air permeability (ISO 9237): 65 l/m²/s
- Finishing: Water repellent Teflon/Scotchgard treatment, dirt repellent and anti-mould treatment
- Spray Test (ISO 4920): 4 out of 5
- UV Colour fastness (ISO 105 B02): 5/8 out of 8
- Colour fastness to weather (ISO 105 B04): 5/8 out of 8
- Colour fastness after washing at 40°C (ISO 105 C06): 5 out of 5

Visit www.giovanardi.com for complete colours range / Visionate la completa gamma colori su www.giovanardi.com

SX Silvertex Fabric / Tessuto Silvertex



3066
BALTIC

5020
BASIL

1014
UMBER

0002
SANDSTONE

4004
ICE

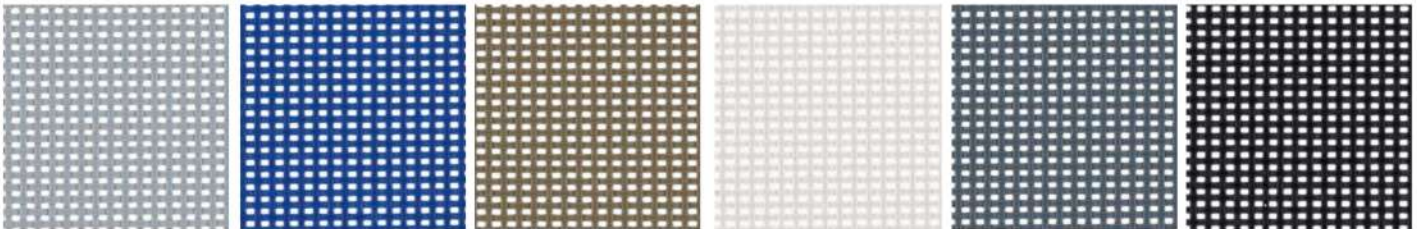
4003
GRAPHITE

- Composition: 100% Vinyl / Polyester Backing
 - Abrasion: >300.000 cycles Martindale (EN ISO 12947:1999 Part 2)
 - UV Resistance: ISO 105 B04 ≥ 4/5 (Grey Scale), ISO 105 B02 ≥ 7/8 (Blue Wool Scale)
 - Flame Retardancy: EU: EN 1021 Part 1 & 2
- DE: DIN 4102 B2 ECE Regulation No.118:03 (R118.02 Annexes 6, 7 & 8), ES: UNE 23.727-90 1R/M.2, FR: NF P 92-503/M2, IT: UNI 9175 (1987) / UNI 9175/FA1 (1994) Classe 1.1M (UNO I EMME), AT: ÖNORM B 3825, Gruppe 1 - Schwerbrennbares Verhalten, AT: ÖNORM A 3800 Teil 1, Qualmbildungsklasse Q1 - schwachqualmend, IMO FTP 2010 Code MSC.307 (88) Part 8 3.1 & 3.2, (MED) Marine Equipment Directive (in its current valid version), EN 71-2:2006+A1:2007 - Safety of Toys - Parte 2: Flammability, US: CAL TB 117-2013, Section E, FMVSS 302, FAR 25/853
- Fire proof: NF P 92-503 / M2, EN 1021, Part I & 2, DIN 4102 B2, ÖNORM B 3825, Gruppe I - Schwerbrennbares Verhalten, ÖNORM A 3800, Teil I, Qualmbildungsklasse Q1 --- schwachqualmend IMO FTP 2010 Code MSC.307 (88), Part 8.3.1 & 3.2, (MED) Council Directive 96/98 EC (Starting 09/2016: Directive 2014/90/EU), UNI 9175 (1987) / UNI 9175/FA1 (1994) Classe 1.1M (uno I EMME), UNE 23.727-90 IR/M2, EN 71-2: 2006+A1: 2007 Safety of Toys - Part 2: Flammability, ECE R 11 8 (replaces Directive 95/28/EC), FMVSS 302, FAR 28/853

Visit www.spradling.eu for complete colours range / Visionate la completa gamma colori su www.spradling.eu

COLOURS AND FINISHES COLORI E FINITURE

R Mesh Fabric / Tessuto Rete



R08

R10

R09

R01

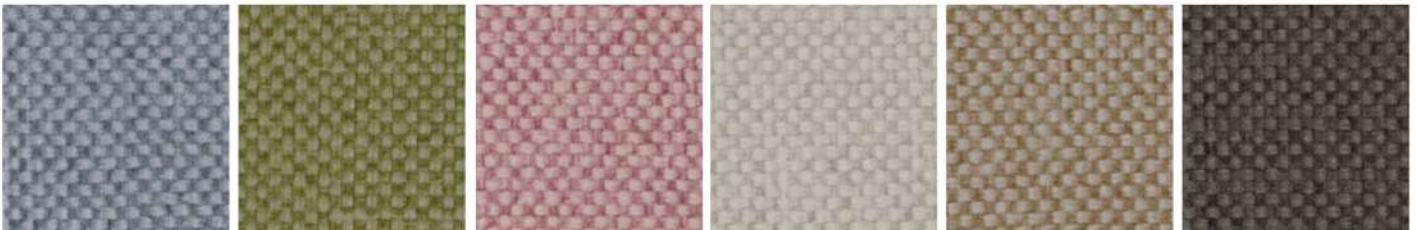
R03

R02

- Composition: Polyvinyl 70% - Polyester 30%
- Warp Tensile Strength: 310Kg/5cm
- Weft Tensile Strength: 270Kg/5cm
- Fire retardant on request

Visit www.plastitex.com for complete colours range / Visionate la completa gamma colori su www.plastitex.com

MG Maglia Vinyl Fabric / Tessuto Maglia Vinile



0003

0406

4203

5001

6025

4537



1702

6016

- Composition: Vynil 100%
- Abrasion: >100.000 cycles Martindale (EN ISO 12947:1999 Part 2)
- Fire Proof: EN 1021 Part 1 & 2, UNE 23.727-90 1R/M.2, NF P 92-503/M2, DIN 4102 B2, UNI 9175 (1987) / UNI 9175/FA1 (1994) Classe 1.IM (UNO I EMME), ÖNORM B 3825, Gruppe 1 - Schwerebrennbares Verhalten, ÖNORM A 3800 Teil 1, Qualmbildungsklasse Q1 – schwachqualmend, IMO FTP 2010 Code MSC.307 (88) Part 8 3.1 & 3.2, FMVSS 302, US: FAR 25/853, (MED) Marine Equipment Directive (in its current valid version), ECE R118.02 (replaces Directive 95/28/CE) Annexes 6, 7 & 8, EN 71-2:2006+A1:2007 - Safety of Toys - Parte 2: Flammability, CAL TB 117-2013, Section E
- Light Resistance: UV-Resistance XENOTEST DIN 54004/ NTC 1479

Visit www.spradling.eu for complete colours range / Visionate la completa gamma colori su www.spradling.eu

MD Maderno Fabric / Tessuto Maderno



MD 01

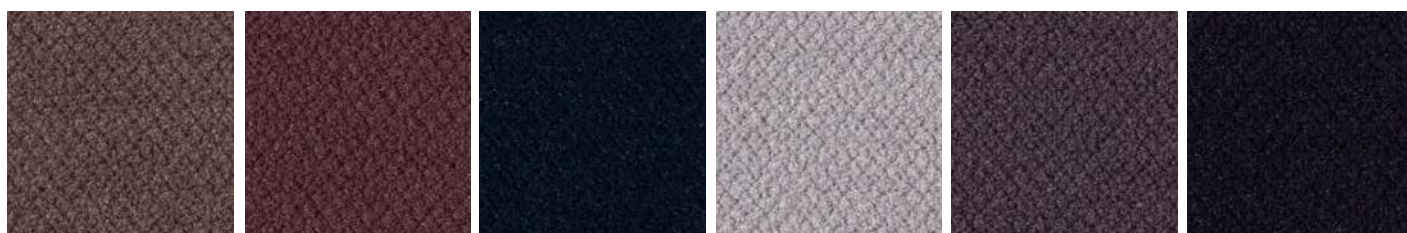
MD 02

MD 03

MD 108

MD 37

MD 116



MD 05

MD 66

MD 25

MD 115

MD 117

MD 132



MD 127

MD 129

MD 14

MD 119

MD 09

MD 131



MD 11

MD 24

MD 20

MD 63

MD 905

MD 07

- Composition: 100% Polyester
- Abrasion: <100000 Martindale cycles
- Light Fastness: (EN ISO 105-B02)
- Fire proof: 1 IM UNI 9175
EN 1021-1:2014, EN 1021-2:2014, CRIB 5, TB 117:2013, NPFA 260:2019, MI, IMO
- Maintenance: Standard 60° C cotton cycle.

More MD finishes ►

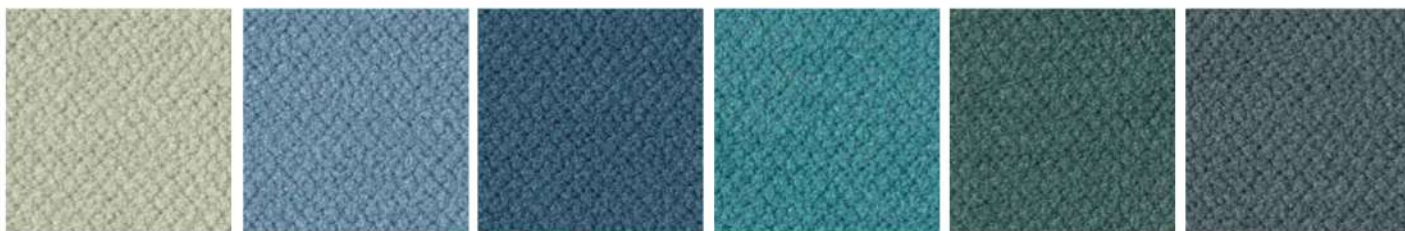
Visit www.chioccarello.it for complete colours range / Visionate la completa gamma colori su www.chioccarello.it

COLOURS AND FINISHES

COLORI E FINITURE



MD Maderno Fabric / Tessuto Maderno



MD 33

MD 27

MD 901

MD 45

MD 158

MD 38



MD 40

MD 909

MD 56

MD 121

MD 13

MD 26

- Composition: 100% Polyester
- Abrasion: <100000 Martindale cycles
- Light Fastness: (EN ISO 105-B02)
- Fire proof: 1 IM UNI 9175
EN 1021-1:2014, EN 1021-2:2014, CRIB 5, TB 117:2013, NPFA 260:2019, MI, IMO
- Maintenance: Standard 60° C cotton cycle.

Visit www.chioccarello.it for complete colours range / Visionate la completa gamma colori su www.chioccarello.it



J Jewel Fabric / Tessuto Jewel



J 1

J 2

J 3

J 4

J 5



J 6

J 7

J 8

J 9

- Composition: 100% PES
- Abrasion: UNI EN ISO 12947-2 - <100.000 Martindale cycles
- Fire proof: UNI 9175 classe 1/M
EN 1021-1, EN 1021-2, CRIB 5
- Maintenance: Standard 60° C cotton cycle.

Visit www.flukso.it for complete colours range / Visionate la completa gamma colori su www.flukso.it



H Chill Fabric / Tessuto Chill



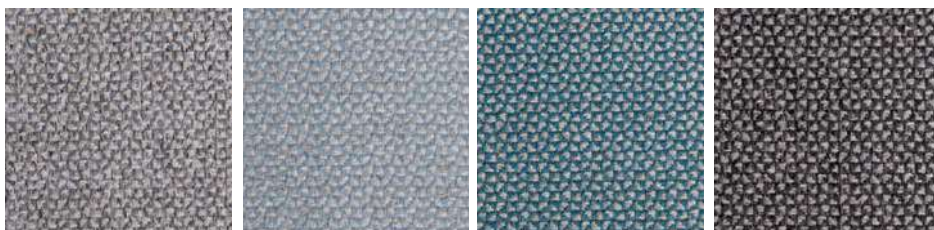
H 1

H 2

H 3

H 4

H 5



H 6

H 7

H 8

H 9

- Composition: 100% PES
- Abrasion: UNI EN ISO 12947-2 - <40.000 Martindale cycles
- Fire proof: UNI 9175 classe 1/M
EN 1021-1, EN 1021-2, CRIB 5
- Maintenance: Standard 60° C cotton cycle.

Visit www.flukso.it for complete colours range / Visionate la completa gamma colori su www.flukso.it

COLOURS AND FINISHES COLORI E FINITURE

E Simil leather Aurea / Ecopelle Aurea



23

7

14

15

16

8



9

10

17

19

21

11



2

3

5

6



1

22

28

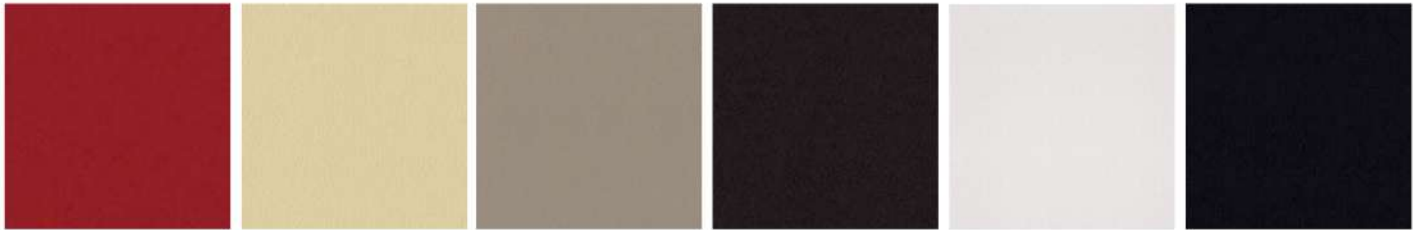
26

- Composition: 72% PVC - 3% PU - 25% COTTON
- Abrasion: EN ISO 5470-2 100.000 Cycle Martindale
- Light Resistance-Xenotest: UNI EN ISO 105-B02 / 6
- Fire proof: UNI 9175 classe 1IM, EN 1021-1, EN 1021-2, BS 5852-1 cigarette test, BS 5852-1 match test BS 5852 crib 5, TB 117:2013, IMO res. A.652(16)
- Maintenance: Dust gently or pass the surface with a damp cloth.

Visit www.flukso.it for complete colours range / Visionate la completa gamma colori su www.flukso.it



C Leather / Cuoio



106

102

111

108

101

109

- Composition: 100% Grain Leather, Italian tannery
- Light Resistance: IUF/101
- Fire proof: CAL TB 117-00, Section E -part 1; BS 5852/90 section 4 (CRIB 5); UNI 91/75 Classe 2IM
- Maintenance: Dust gently or pass the surface with a damp cloth.



P Leather / Pelle



106P

102P

111P

110P

108P



101P

112P

109P

- Composition: 100% Top Grain Leather, European tannery
- Light Resistance-Xenotest: UNI EN ISO 105-B02
- Fire proof: British Standard BS 5852 Part 1 (1979), Imo FTP:Part 8-Resolution A.652 (16), TB 117-A11@20132013 Cigarette Test (California)
- Maintenance: Dust with a soft and dry cloth.

Visit www.anicaleather.com for complete colours range / Visionate la completa gamma colori su www.anicaleather.com