

Scheda Tecnico Illustrativa Seduta Direzionale

Serie "Auckland"



Immagini identificative del prodotto

DESCRIZIONI TECNICHE:

Scocca: Struttura in tubo di acciaio Ø 25 mm sp. 2 mm con piatto in acciaio di rinforzo 30 mm sp. 6 mm di tubo cromato - tirante interno per fissaggio rete in acciaio Ø16 mm sp. 2 mm cromato. Imbottitura in poliuretano espanso ignifugo T 40/P CM, densità 40 Kg/m³ (metodo di prova C.S.E. RF 4/83 (UNI9175)) classe 1IM - tessuto portante in poliestere spalmato PVC laccato lucido 2 lati.

Braccioli fissi in alluminio lucido.

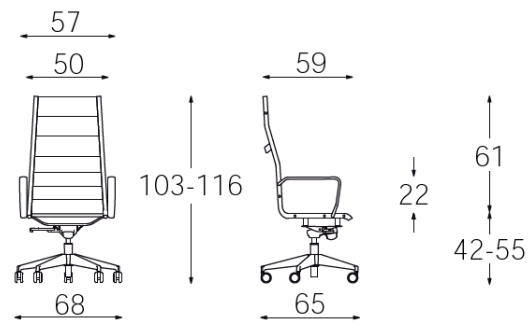
Meccanismo oscillante multiblock monoleva per regolazione altezza e blocco/sblocco oscillazione - angolo di oscillazione 16° - blocco/sblocco in 5 posizioni con dispositivo antishock - volantino di regolazione intensità oscillazione in funzione del peso, risponde ai requisiti ANSI-BIFMA X5.1-2011.

Colonna acciaio verniciato nero o cromato, risponde ai requisiti EN16955:2017 CLASSE 4.

Basamento 5 Razze in alluminio spazzolato lucido Ø 680 mm, secondo metodo di prova ANSI-BIFMA X5.1-2011 e LGA 2830-22AP.

Ruote piroettanti autofrenanti a doppia battitura Ø 50, antiurto e antiusura di tipo "W" e rispondono ai requisiti ANSI-BIFMA X5.1-2011/17 E DIN EN 12529.

Rivestimento Tessuto ignifugo classe 1, tessuto spalmato fiammaritardante o ignifugo, vera pelle europea.



Base 5 razze c/KT e braccioli
 Imbottitura poliuretano espanso

FINITURE DISPONIBILI

JET / CAT. F



4051



9402



4018



9110



9305



7025



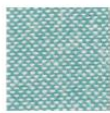
9703



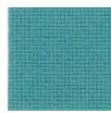
7034



3019



9610



6007



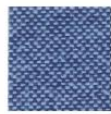
6091



2024



6056



9601



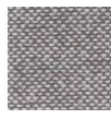
6013



9108



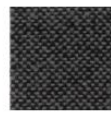
8009



9804



8033



9281



8017



8078



6095

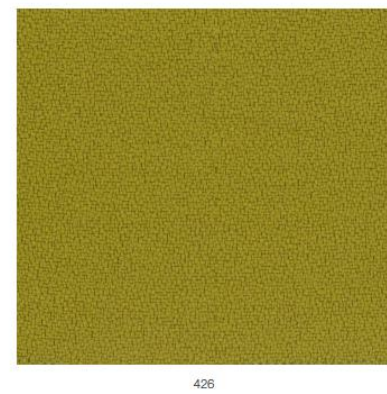


9601

PLANET - SURROUND / CAT. F



MIRAGE / CAT. G



ONE / CAT. G



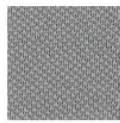
6512



1006



6024



8032



4030



7521



4079



6555



2519



4566



7504



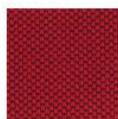
1506



3530



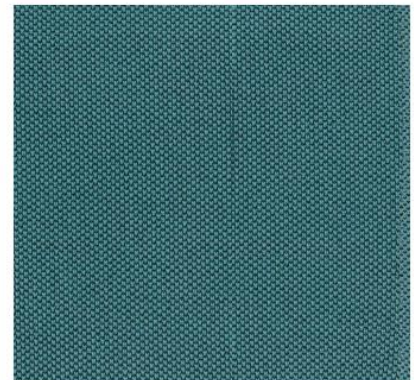
7026



4528



8033



7504

ERA / CAT. S



CSE29



CSE02



CSE10



CSE01



CSE25



CSE16



CSE21



CSE08



CSE19



CSE33



CSE05



CSE03



CSE20



CSE09



CSE11



CSE15



CSE06



CSE13



CSE14



CSE23



CSE01

ROCCIA / CAT. S



4501



3508



2504



3505



6502



8501



6501



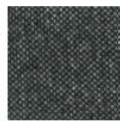
2502



4505



7503



8030



6505



1503



6508



1502



5501



4502



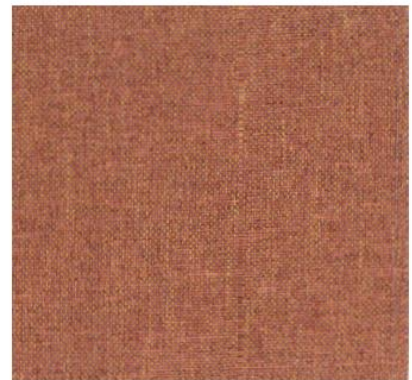
5504



8502



1504



5504

DAYTONA / CAT. TOP



76



146



72



131



184



102



155



78



158



157



142



81



156



56



145



108



78

IMPERIA - SPICE - DAYTONA / CAT. TOP



IMPERIA 12



SPICE 4



IMPERIA 2



SPICE 3



IMPERIA 3



DAYTONA 146



DAYTONA 158



DAYTONA 145



DAYTONA 102



IMPERIA 7



SPICE 2



IMPERIA 9



DAYTONA 72



SPICE 6



DAYTONA 76



DAYTONA 184



DAYTONA 81



IMPERIA 1

IKON / CAT. TOP



1330



230



1830



930



330



2030



530



1430



1630



2230



1730



1130



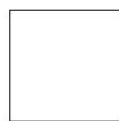
430



1030



1230



130



330

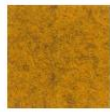
BLAZER - HESTAN / CAT. EXTRA



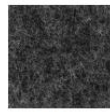
BLAZER CUZ08



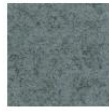
BLAZER CUZ2U



BLAZER CUZ82



BLAZER CUZ30



BLAZER CUZ33



BLAZER CUZ1V



BLAZER CUZ47



BLAZER CUZ3A



BLAZER CUZ39



BLAZER CUZ47



BLAZER CUZ28



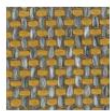
BLAZER CUZ86



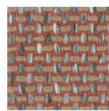
BLAZER CUZ53



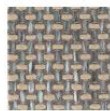
HESTAN 7035.21



HESTAN 7035.20



HESTAN 7035.10



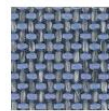
HESTAN 7035.21



HESTAN 7035.29



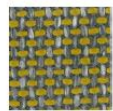
HESTAN 7035.26



HESTAN 7035.28



HESTAN 7035.03



HESTAN 7035.17

GORGEOUS / CAT. EXTRA



2142



2103



2140



2158



2109



2102



2111



2151



2156



2130



2147



2144



2106



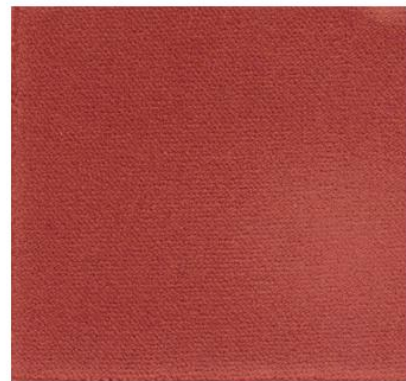
2152



2113



2129

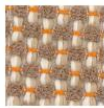


2113

MOORE - AUCKLAND - FOSTER / CAT. EXTRA



FOSTER 7072.03



MOORE 7075.07



MOORE 7075.08



FOSTER 7072.07



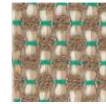
MOORE 7075.12



FOSTER 7072.02



FOSTER 7072.04



MOORE 7075.11



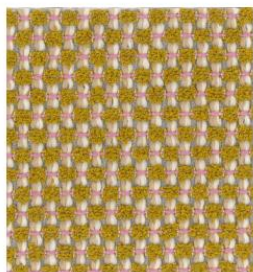
FOSTER 7072.17



FOSTER 7072.05



MOORE 7075.04



MOORE 7075.03



AUCKLAND 7071.14



AUCKLAND 7071.19



FOSTER 7072.19



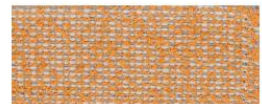
MOORE 7075.05



AUCKLAND 7071.16



FOSTER 7072.01



AUCKLAND 7071.17

POLO / CAT. FIESTA



837



824



813



843



833



933



878



810



822



827



844



881



847



818



859



839



860



853



861



838



824

NUVOLA / CAT. NUVOLA



500



508



522



569



N98



N47



533



501



513



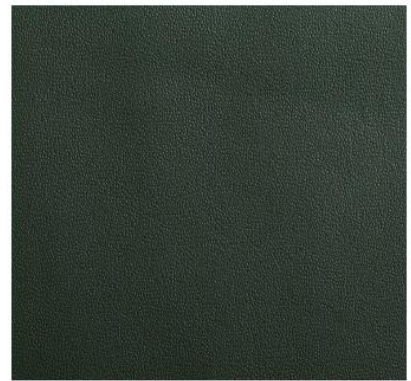
510



526



553



553



