

Scheda Tecnico Illustrativa Seduta Visitatore

Serie "Auckland"



Immagine identificativa del prodotto

DESCRIZIONI TECNICHE:

Scocca: Struttura in tubo di acciaio Ø 25 mm sp. 2 mm con piatto in acciaio di rinforzo 30 mm sp. 6 mm di tubo cromato - tirante interno per fissaggio rete in acciaio Ø16 mm sp. 2 mm cromato. Imbottitura in poliuretano espanso ignifugo T 40/P CM, densità 40 Kg/m³ (metodo di prova C.S.E. RF 4/83 (UNI9175)) classe 1IM - tessuto portante in poliestere spalmato PVC laccato lucido 2 lati.

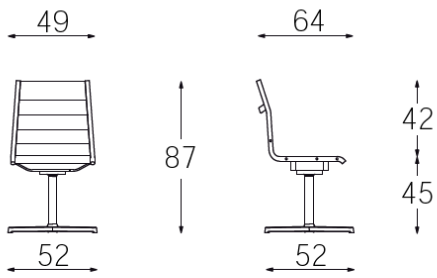
Braccioli fissi in alluminio lucido.

Meccanismo: oscillante multiblock monoleva per regolazione altezza e blocco/sblocco oscillazione - angolo di oscillazione 16° - blocco/sblocco in 5 posizioni con dispositivo antishock - volantino di regolazione intensità oscillazione in funzione del peso, risponde ai requisiti ANSI-BIFMA X5.1-2011.

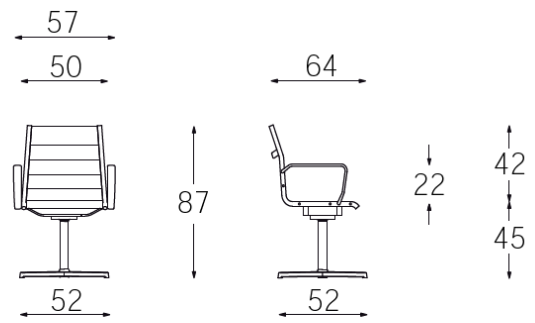
Colonna acciaio Ø 50 mm H. 265 mm con sistema di ritorno punto fisso.

Basamento: 4 Razze in alluminio spazzolato lucido Ø 730 mm, secondo metodo di prova ANSI-BIFMA X5.1-2002.

Rivestimento Tessuto ignifugo classe 1, tessuto spalmato fiammaritardante o ignifugo, vera pelle europea.



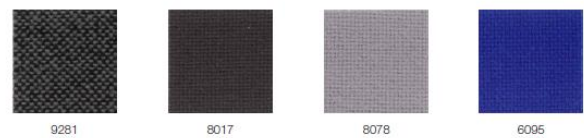
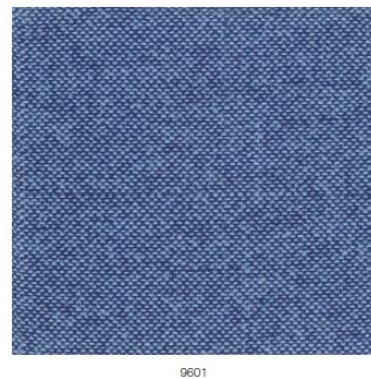
Base 4 razze - Visitatore
 Imbottitura poliuretano espanso



Base 4 razze c/braccioli - Visitatore
 Imbottitura poliuretano espanso

FINITURE DISPONIBILI

JET / CAT. F



PLANET - SURROUND / CAT. F



110

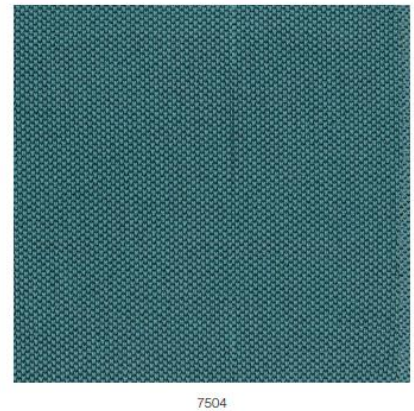


MIRAGE / CAT. G



426

ONE / CAT. G



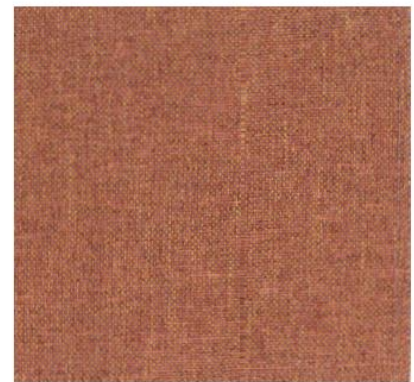
7504

ERA / CAT. S



CSE01

ROCCIA / CAT. S



5504

DAYTONA / CAT. TOP



78

IMPERIA - SPICE - DAYTONA / CAT. TOP



IMPERIA 12



SPICE 4



IMPERIA 2



SPICE 3



IMPERIA 8



DAYTONA 146



DAYTONA 158



DAYTONA 145



DAYTONA 102



IMPERIA 7



SPICE 2



IMPERIA 9



DAYTONA 72



SPICE 6



DAYTONA 76



DAYTONA 184



DAYTONA 81



IMPERIA 1

IKON / CAT. TOP



1330



230



1830



930



330



2030



530



1430



1630



2230



1730



1130



430



1030



1230



130



330

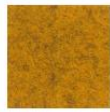
BLAZER - HESTAN / CAT. EXTRA



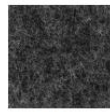
BLAZER CUZ08



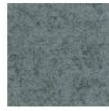
BLAZER CUZ2U



BLAZER CUZ82



BLAZER CUZ30



BLAZER CUZ33



BLAZER CUZ1V



BLAZER CUZ47



BLAZER CUZ3A



BLAZER CUZ39



BLAZER CUZ47



BLAZER CUZ28



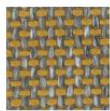
BLAZER CUZ86



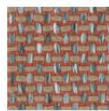
BLAZER CUZ53



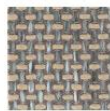
HESTAN 7035.21



HESTAN 7035.20



HESTAN 7035.10



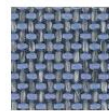
HESTAN 7035.21



HESTAN 7035.29



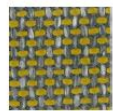
HESTAN 7035.26



HESTAN 7035.28



HESTAN 7035.03



HESTAN 7035.17

GORGEOUS / CAT. EXTRA



2142



2103



2140



2158



2109



2102



2111



2151



2156



2130



2147



2144



2106



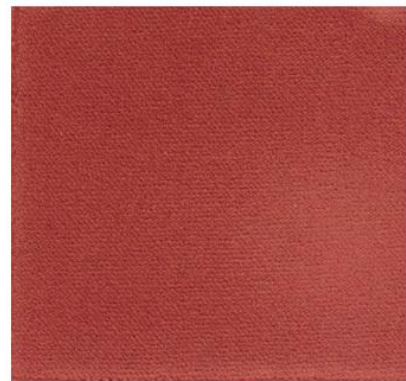
2152



2113



2129

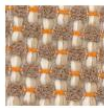


2113

MOORE - AUCKLAND - FOSTER / CAT. EXTRA



FOSTER 7072.03



MOORE 7075.07



MOORE 7075.08



FOSTER 7072.07



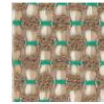
MOORE 7075.12



FOSTER 7072.02



FOSTER 7072.04



MOORE 7075.11



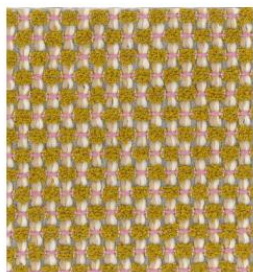
FOSTER 7072.17



FOSTER 7072.05



MOORE 7075.04



MOORE 7075.03



AUCKLAND 7071.14



AUCKLAND 7071.19



FOSTER 7072.19



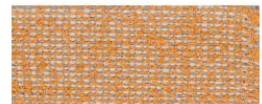
MOORE 7075.05



AUCKLAND 7071.16



FOSTER 7072.01



AUCKLAND 7071.17

POLO / CAT. FIESTA



837



824



813



843



833



933



878



810



822



827



844



881



847



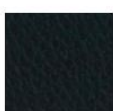
818



859



839



860



853



861



838



824

NUVOLA / CAT. NUVOLA



500



508



522



569



N98



N47



533



501



513



510



526



553



553

